

COST ESTIMATING




UNIVERSITY OF LOUISIANA AT LAFAYETTE MASTER PLAN AND GUIDING PRINCIPLES



BUILDINGS - ACADEMIC											
CATEGORY/OBJECT	GROSS SF	EXISTING USE	EXISTING NET SF	PROPOSED USE	PROPOSED NET SF	EXCESS SF	UNIT	UNIT COST	FCI COST	TOTAL COST	COMMENTS
ANGELLE HALL	55,760	Arts	N/A	No Change	N/A	0	SF	\$0	\$1,443,917	\$1,443,917	Only FCI cost anticipated.
BILLEAUD HALL	61,796	Science (Biology)	N/A	No Change	N/A	0	SF	\$200	\$3,601,734	\$12,359,200	Renovation
BROUSSARD HALL	18,888	Science (Physics)	12,688	English (Liberal Arts)	8,776	3,912	SF	\$100 - \$120	\$585,620	\$1,888,800 - \$2,266,560	Renovation
BURKE HALL	38,618	Liberal Arts (Communication) & Arts (Theater)	N/A	No Change	N/A	N/A	SF	\$0	\$2,003,109	\$2,003,109	Only FCI cost anticipated
BURKE-HAWTHRONE ANNEX	848	N/A	N/A	No Change	N/A	N/A	SF	\$0	\$39,352	\$39,352	Only FCI cost anticipated
CONFERENCE CENTER	220,000	Pool Area Available	NI	Arts Gallery	NI	N/A	SF	\$0	\$5,825,323	\$5,825,323	Pool area available for potential art gallery when need arises. Only FCI cost anticipated currently
DECLOU CET HALL	14,392	General Studies	8,850	Computing Center	NI	NI	SF	\$250	\$1,015,028	\$2,212,500	General Studies program being eliminated
DUPRE LIBRARY	217,551	Library	N/A	No Change	N/A	0	SF	\$0	\$1,693,758	\$1,693,758	Dupre Library has additional space but is reserved for future library needs
EK LONG ANNEX	6,050	Woman's Athletics	N/A	No Change	N/A	0	SF	\$0	\$161,520	\$161,520	Only FCI cost anticipated
EK LONG GYM	33,738	N/A	N/A	No Change	N/A	0	SF	\$0	\$2,609,950	\$2,609,950	Only FCI cost anticipated
FG MOUTON HALL	41,400	Business	N/A	No Change	N/A	0	SF	\$0	\$1,611,829	\$1,611,829	Needs study group study area Only FCI cost anticipated
FLETCHER HALL	71,087	Arts (Architecture)	N/A	Arts (Architecture)	N/A	0	SF	NI	NI	NI	Renovation/Addition currently planned
GIRARD HALL	25,902	Education and Liberal Arts (Psychology)	Psychology - 10,600 SF EDCI - 3,330 SF EDFL - 1,740 SF	Education	ED (Kines) - 13,280 SF EDCI - 3,330 SF EDFL - 1,740 SF Education - 1,940 SF	-4,620 SF	SF	\$0	NI	NI	Recently renovated, no current FCI information Education will need additional space and should consider an addition to accommodate.
GUILLORY HALL	12,760	N/A	N/A	N/A	N/A	N/A	SF	\$5	\$157,542	\$63,800	DEMOLITION
HAMILTON HALL	33,564	Geology - 7643 Env. Science - 2400 Smart Diet - 12,145 HRTM - 2,000 Child and Fam Studies - 1,832	26,020	Env. Science - 2400 Child and Fam Studies - 1,832	Env. Science - 2400 Child and Fam Studies - 1,832	21,788	SF	\$0	\$744,443	\$744,443	Lunch club/HRTM and dietics move. Geology moves to Griffin. Excess could be utilized for incubator space. Only FCI cost anticipated.

* To all cost estimates add 10% for soft costs
 ** To all cost estimates add 3.5% compounded annually from the adoption date of this document for inflation



COST ESTIMATING

TO ESTIMATE THE COST NEEDS FOR THE ACADEMIC CAMPUS, THE PLANNING TEAM MET WITH REPRESENTATIVES FROM EVERY COLLEGE AND DEPARTMENT. IT WAS DETERMINED THAT HAVING HUMANITIES IN THE HISTORIC QUAD WOULD BE BENEFICIAL TO STUDENTS. LIKEWISE, LOCATING THE SCIENCE AND ENGINEERING IN CLOSE PROXIMITY WOULD FOSTER A CREATIVE DIALOGUE BETWEEN DISCIPLINES.

COST ESTIMATING

BUILDINGS - ACADEMIC											
CATEGORY/OBJECT	GROSS SF	EXISTING USE	EXISTING NET SF	PROPOSED USE	PROPOSED NET SF	EXCESS NET SF	UNIT	UNIT COST	FCI COST	TOTAL COST	COMMENTS
HL GRIFFIN HALL	121,406	Modern Language - 21,542 SF English - 36,416 SF Hist/Geo/Phil - 20,930 SF Humanities - 8,776 SF	Modern Language - 21,542 SF English - 36,416 SF Hist/Geo/Phil - 20,930 SF Humanities - 8,776 SF	Engineering offices - 5,400 SF Science Math 23,100 SF Physics - 12,700 SF Geology - 10,000 SF	51,243	36,421	SF	\$100 - \$200	\$5,166,422	12,140,600 - \$24,281,200	Excess square footage to be used for Science and Engineering program growth
MADISON HALL	106,698	Engineering & Science (Geology)	N/A	No Change	N/A	0	SF	\$100 - \$200	\$6,390,757	\$10,669,800 - \$21,339,600	Needs significant renovation to accommodate teaching lab space
MAXIM DOUCET HALL	62,400	Science (Math) & Education	Math - 23,130 SF Education - 15,210 SF	Liberal Arts (English)	Liberal Arts - 36,420 SF	1,920 SF	SF	\$100 - \$200	\$2,865,560	\$6,240,000 - 12,480,000	Mold causing health issues 700 SF of excess to be used by Education (see Girard and Broussard)
MCLAURIN HALL	17,320	Arts (Performing Arts)	N/A	No Change	N/A	0	SF	\$200	\$867,303	\$3,464,000	
MONTGOMERY HALL	44,432	Science (Chemistry)	N/A	No Change	N/A	0	SF	\$225	\$2,262,332	\$9,997,200	Renovation
MOODY HALL	NI	Business	N/A	No Change	N/A	0	SF	\$0	NI	\$0	New building no information provided
MOUTON HALL	18,628	Liberal Arts (Sociology & Anthropology)	N/A	No Change	N/A	0	SF	\$0	\$678,184	\$678,184	Only FCI cost anticipated
OLIVER HALL	NI	Computer Science	N/A	No Change	N/A	0	SF	\$0	NI	\$0	New building no information provided
ROTC BUILDING (NOW VIS. ARTS)	11,544	Visual Arts	N/A	No Change	N/A	0	SF	\$0	\$386,344	\$386,344	Only FCI cost anticipated
ROUGEOU HALL & STORAGE BLDG	101,718	Engineering & Science (Geology & Cognitive Science)	Engineering - 37,800 SF Geology - 2,400 SF Cognitive Science - 6,100 SF	No Change	N/A	0	SF	\$200	\$1,725,649	\$20,343,600	Ground floor addition to accommodate pilot and bench labs and storage
STEPHENS HALL	28,388	Computer Center	11,350 SF	Liberal Arts	\$21,542	-10,192	SF	\$125 - \$150	\$1,851,574	\$3,548,500 - \$4,258,200	
VL WHARTON HALL	127,278	Nursing, HIM, Media	Nursing - 37,707 HIM - 6,232 Graduate School - 826 Special Admin Suites - 3,121 Allied Health - 972	Hist/ Geo/Phil & Psychology	Hist/Geo/Phil - 20,900 Psychology - 10,602 Child and Fam - 1,832 Grad. School - 826	14,668 SF	SF	\$125 - \$150	\$6,500,826	\$15,909,750 - \$19,091,700	Nursing program moving to the St. Landry Corridor

* To all cost estimates add 10% for soft costs

** To all cost estimates add 3.5% compounded annually from the adoption date of this document for inflation



COST ESTIMATING

ALL FCI COSTS WERE PROVIDED BY THE UNIVERSITY. THESE COSTS WILL CHANGE WITH TIME AND AS THE COST OF CONSTRUCTION FLUCTUATES. SQUARE FOOTAGE SHOWN IS AN ESTIMATE AND INFORMATION SHOULD BE VERIFIED WITH EACH NEW RENOVATION/ BUILDING PROJECT.

FCI = FACILITY CONDITION INDEX
SF = SQUARE FEET
LF = LINEAR FEET
EA = EACH
FP = FOOTPRINT
DU = DWELLING UNIT

BUILDINGS - ADMINISTRATION					
CATEGORY/OBJECT	SIZE	UNIT	UNIT PRICE	COST	COMMENTS
ROY HOUSE	4,804	SF	\$250	\$720,600	LA Studies moving
SOULIER HOUSE	5,132	SF	N/A	\$122,849	Only FCI cost anticipated
ALUMNI CENTER BOARD ROOM	1,794	SF	N/A	\$2,801	Only FCI cost anticipated
ALUMNI HALL	1,621	SF	N/A	\$99,380	Only FCI cost anticipated
OK ALLEN HALL	25,799	SF	N/A	N/A	Building recently renovated. No FCI information available.
FRENCH HOUSE	5,796	SF	N/A	\$87,994	Only FCI cost anticipated
FOSTER HALL	18,648	SF	N/A	\$962,411	Only FCI cost anticipated
LEE HALL	16,184	SF	N/A	\$454,482	Only FCI cost anticipated
MARTIN HALL	50,852	SF	N/A	1,889,498	Only FCI cost anticipated
OLIVIER HALL	14,100	SF	\$5	\$70,500	DEMOLITION
BITTLE HALL	5,563	SF	N/A	\$422,283	Only FCI cost anticipated
CORONNA HALL	10,840	SF	\$5	\$54,200	DEMOLITION
JUDICE HALL	14,081	SF	N/A	\$141,745	Only FCI cost anticipated

BUILDINGS - CIVIC/SPECIAL USE					
CATEGORY/OBJECT	SIZE (SF)	UNIT	UNIT PRICE	COST	COMMENTS
ART MUSEUM (A HAYS TOWN)	9,360	SF	N/A	\$308,295	Only FCI cost anticipated
STUDENT UNION	112,944	SF	N/A	N/A	Currently Under Construction
CAJUN DOME CONVENTION CENTER	97,522	SF	N/A	NI	FCI cost not provided. No additional costs anticipated
CAJUN DOME	516,904	SF	N/A	NI	FCI cost not provided. No additional costs anticipated

BUILDINGS - COMMERCIAL					
CATEGORY/OBJECT	SIZE	UNIT	UNIT PRICE	COST	COMMENTS
BANK ONE BUILDING	3,147	SF	N/A	\$273,567	Only FCI cost anticipated
DAY CARE CENTER (SGA)	4,453	SF	N/A	\$0	Only FCI cost anticipated
KAJUN WASHETERIA	1,876	SF	N/A	\$119,680	Only FCI cost anticipated
SNACK HUT	850	SF	N/A	\$0	Only FCI cost anticipated

BUILDINGS - HORTICULTURE					
CATEGORY/OBJECT	SIZE	QUANTITY	UNIT PRICE	COST	COMMENTS
HORTICULTURE COMPLEX	16,856	SF	\$5	\$84,280	DEMOLITION
HORTICULTURE PUMPHOUSE	144	SF	\$5	\$720	DEMOLITION
IRA NELSON CENTER	12,010	SF	\$5	\$60,050	DEMOLITION

BUILDINGS - MAINTENANCE					
CATEGORY/OBJECT	SIZE	QUANTITY	UNIT PRICE	COST	COMMENTS
DOUCET EQUIPMENT BUILDING	2,678	SF	\$5	\$13,390	DEMOLITION
FLETCHER EQUIPMENT BUILDING	1,199	SF	\$5	\$5,995	DEMOLITION
GRIFFIN MECHANICAL BUILDING	2,808	SF	\$5	\$14,040	DEMOLITION
MAINTENANCE OFFICE & SHOP BLDG	19,532	SF	\$5	\$97,660	DEMOLITION
MAINTENANCE RECEIVING BLDG	5,945	SF	\$5	\$29,725	DEMOLITION
MAINTENANCE WAREHOUSE	12,368	SF	\$5	\$61,840	DEMOLITION
STEPHENS EQUIPMENT BLDG	1,672	SF	\$5	\$8,360	DEMOLITION
STOKES MECHANICAL BUILDING	1,974	SF	\$5	\$9,870	DEMOLITION
BUS WORKSHOP	1,271	SF	\$5	\$6,355	DEMOLITION
ATHLETIC MECH. BUILDING	4,140	SF	\$5	\$20,700	DEMOLITION
BLACKHAM LAGCO BLDG	775	SF	\$5	\$3,875	DEMOLITION
CATTLE SHELTER (COLISEUM)	8,241	SF	\$5	\$41,205	DEMOLITION
COLISEUM EQUIPMENT BLDG	2,652	SF	\$5	\$13,260	DEMOLITION
CREAMERY	8,300	SF	\$5	\$41,500	DEMOLITION
FARM STORE	1,974	SF	\$5	\$9,870	DEMOLITION
GREENHOUSE & EQUIP GARAGE	578	SF	\$5	\$2,890	DEMOLITION
STORAGE SHED (COL RD)	862	SF	\$5	\$4,310	DEMOLITION
TRACTOR SHED (COL RD)	2,407	SF	\$5	\$12,035	DEMOLITION
PARKER HALL	23,163	SF	\$0	\$464,875	Only FCI Cost Anticipated

BUILDINGS - ATHLETIC
 REFER TO ATHLETIC FACILITIES MASTER PLAN DONE BY 360 ARCHITECTS

* To all cost estimates add 10% for soft costs
 ** To all cost estimates add 3.5% compounded annually from the adoption date of this document for inflation

COST ESTIMATING

BUILDINGS - RESIDENTIAL

CATEGORY/OBJECT	SIZE	UNIT	UNIT PRICE	COST	COMMENTS
CONFERENCE	220,000	SF	N/A	\$5,825,323	Only FCI cost anticipated
CAJUN VILLAGE A	8,448	SF	\$5	\$42,240	DEMOLITION
CAJUN VILLAGE B	8,448	SF	\$5	\$42,240	DEMOLITION
CAJUN VILLAGE C	8,448	SF	\$5	\$42,240	DEMOLITION
CAJUN VILLAGE D	8,448	SF	\$5	\$42,240	DEMOLITION
CAJUN VILLAGE E	8,448	SF	\$5	\$42,240	DEMOLITION
CAJUN VILLAGE F	4,452	SF	\$5	\$22,260	DEMOLITION
CAJUN VILLAGE G	8,448	SF	\$5	\$42,240	DEMOLITION
CAJUN VILLAGE H	8,448	SF	\$5	\$42,240	DEMOLITION
CAJUN VILLAGE I	8,448	SF	\$5	\$42,240	DEMOLITION
CAJUN VILLAGE J	8,448	SF	\$5	\$42,240	DEMOLITION
CAJUN VILLAGE K	8,448	SF	\$5	\$42,240	DEMOLITION
CAJUN VILLAGE L	8,448	SF	\$5	\$42,240	DEMOLITION
CAJUN VILLAGE M	8,448	SF	\$5	\$42,240	DEMOLITION
BONIN HALL	63,096	SF	\$5	\$315,480	DEMOLITION
BUCHANAN HALL	11,603	SF	N/A	\$0	Recently Renovated
HARRIS HALL	31,840	SF	N/A	\$0	Recently Renovated
RANDOLPH HALL	12,420	SF	N/A	\$0	Recently Renovated
STOKES HALL (BLDG A)	28,840	SF	\$5	\$144,200	DEMOLITION
STOKES HALL (BLDG B)	28,840	SF	\$5	\$144,200	DEMOLITION

BUILDINGS - MISCELLANEOUS

CATEGORY/OBJECT	SIZE	UNIT	UNIT PRICE	COST	COMMENTS
BOOKSTORE WAREHOUSE	1,776	SF	N/A	\$0	Only FCI cost anticipated
FLORA LEVY HOUSE	2,000	SF	N/A	\$0	Only FCI cost anticipated
HAWKINS HOUSE GARAGE APT	495	SF	N/A	\$0	Only FCI cost anticipated
HAWKINS HOUSE	4,530	SF	N/A	\$0	Only FCI cost anticipated
HAWKINS HSE SERVANTS QTRS	138	SF	N/A	\$0	Only FCI cost anticipated
ROBERTS HOUSE	1,559	SF	N/A	\$0	Only FCI cost anticipated
WAGNER HOUSE (BRODERICK)	2,751	SF	N/A	\$0	Only FCI cost anticipated
ARBOLADA HOUSE (GAINES)	2,339	SF	N/A	\$0	Only FCI cost anticipated
CENTER FOR GREENHOUSE RES	2,880	SF	N/A	\$0	Only FCI cost anticipated
WHITTINGTON HOUSE	3,044	SF	\$250	\$761,000	Renovation

BUILDINGS - SPECIAL USE

CATEGORY/OBJECT	SIZE	UNIT	UNIT PRICE	COST	COMMENTS
PRESIDENTS RESIDENCE	6,448	SF	N/A	\$13,939	Only FCI cost anticipated
STOKES HALL (BLDG C)	6,073	SF	N/A	\$34,467	Only FCI cost anticipated
BILLEAUD GREENHOUSE I	1,276	SF	N/A	\$0	Only FCI cost anticipated
BILLEAUD GREENHOUSE II	1,419	SF	N/A	\$0	Only FCI cost anticipated
POTTERY KILN	442	SF	N/A	\$0	Only FCI cost anticipated
EXHIBIT BARN B	14,560	SF	\$5	\$72,800	DEMOLITION
EXHIBIT BARN C	30,404	SF	\$5	\$152,020	DEMOLITION
EXHIBIT BARN D	22,260	SF	\$5	\$111,300	DEMOLITION
EXHIBIT BARN E	4,095	SF	\$5	\$20,475	DEMOLITION
EXHIBIT BARN F	6,180	SF	\$5	\$30,900	DEMOLITION
EXHIBIT BARN G	2,400	SF	\$5	\$12,000	DEMOLITION
GREENHOUSE (COL RD)	1,160	SF	\$5	\$5,800	RELOCATED
HOME MANAGEMENT (NURSERY)	2,578	SF	\$5	\$12,890	DEMOLITION
MULE BARN	2,115	SF	\$5	\$10,575	DEMOLITION
POTATO BARN	1,295	SF	\$5	\$6,475	DEMOLITION

* To all cost estimates add 10% for soft costs

** To all cost estimates add 3.5% compounded annually from the adoption date of this document for inflation

COST ESTIMATING

PROPOSED BUILDINGS - UNIVERSITY COMMON						
BUILDING	SIZE	FLOORS	UNIT	UNIT PRICE	COST	COMMENTS
1	148,936	4	SF	\$265	\$39,468,040	
2	144,600	4	SF	\$265	\$38,319,000	
3	144,600	4	SF	\$265	\$38,319,000	
4	5,233	1	SF	\$100	\$523,300	
5	4,366	1	SF	\$100	\$436,600	
6	6,877	1	SF	\$100	\$687,700	
7	135,144	4	SF	\$265	\$35,813,160	
8	5,233	1	SF	\$100	\$523,300	
9	4,366	1	SF	\$100	\$436,600	
10	6,877	1	SF	\$100	\$687,700	
11	5,233	1	SF	\$100	\$523,300	
12	4,366	1	SF	\$100	\$436,600	
13	5,233	1	SF	\$100	\$523,300	
14	4,366	1	SF	\$100	\$436,600	
15	5,233	1	SF	\$100	\$523,300	
16	232,460	4	SF	\$265	\$61,601,900	
17	229,732	4	SF	\$265	\$60,878,980	
18	39,060 FP	+/-4	CAR	-	-	Parking Deck: See Parking and Transit: Parking Decks
19	144,600	4	SF	\$265	\$38,319,000	
20	113,532	4	SF	\$265	\$30,085,980	
21	27,508	4	SF	\$265	\$7,289,620	
22	150,000	4	SF	\$300	\$45,000,000	
23	27,508	4	SF	\$265	\$7,289,620	
24	27,508	4	SF	\$265	\$7,289,620	
25	37,500	2	SF	\$150	\$5,625,000	
26	135,764	4	SF	\$265	\$35,977,460	
27	133,960	4	SF	\$265	\$35,499,400	
28	22,500	2	SF	\$150	\$3,375,000	
29	22,500	2	SF	\$150	\$3,375,000	
30	55,048	4	SF	\$265	\$14,587,720	
31	72,000	2	SF	\$150	\$10,800,000	
32	OFF 5,452 RET 5,452 RES 43,620	5	SF	\$150 \$150 \$120	\$817,800 \$817,800 \$5,234,400	
33	OFF 3,917 RET 3,917 RES 31,340	5	SF	\$150 \$150 \$120	\$587,550 \$587,550 \$3,760,800	
34	OFF 7,112 RET 7,112 RES 56,900	5	SF	\$150 \$150 \$120	\$1,066,800 \$1,066,800 \$6,828,000	

PROPOSED BUILDINGS - UNIVERSITY COMMON						
BUILDING	SIZE	FLOORS	UNIT	UNIT PRICE	COST	COMMENTS
35	OFF 7,112 RET 7,112 RES 56,900	5	SF	\$150 \$150 \$120	\$1,066,800 \$1,066,800 \$6,828,000	
36	38,852	4	SF	TBD	TBD	
37	240,000	4	SF	\$265	\$63,600,000	
38	OFF 7,658 RET 7,658 RES 61,268	5	SF	\$150 \$150 \$120	\$1,148,700 \$1,148,700 \$7,352,160	
39	77,977 FP	+/-5	CAR	-	-	Parking Deck: See Parking and Transit: Parking Decks
40	115,200	4	SF	\$265	\$41,128,000	
41	OFF 4,058 RET 4,058 RES 32,468	5	SF	\$150 \$150 \$120	\$608,700 \$608,700 \$3,896,160	
42	OFF 18,597 RET 18,597 RES 148,780	5	SF	\$150 \$150 \$120	\$2,789,550 \$2,789,550 \$17,853,600	
43	OFF 12,645 RET 12,645 RES 101,164	5	SF	\$150 \$150 \$120	\$1,896,750 \$1,896,750 \$12,139,680	
44	100,000	2	SF	\$500	\$50,000,000	
45	RET 13,529 RES 42,068	5	SF	\$150 \$120	\$2,029,350 \$5,048,160	
46	OFF 3,007 RET 3,007 RES 24,056	5	SF	\$150 \$150 \$120	\$451,050 \$451,050 \$2,886,720	
47	OFF 4,774 RET 4,774 RES 38,196	5	SF	\$150 \$150 \$120	\$716,100 \$716,100 \$4,583,520	
48	OFF 6,267 RET 6,267 RES 50,140	5	SF	\$150 \$150 \$120	\$940,050 \$940,050 \$6,016,800	
49	OFF 3,900 RET 3,900 RES 31,200	5	SF	\$150 \$150 \$120	\$585,000 \$585,000 \$3,744,000	
50	OFF 7,500 RET 7,500 RES 60,000	5	SF	\$150 \$150 \$120	\$1,125,000 \$1,125,000 \$7,200,000	
51	OFF 7,191 RET 7,191 RES 57,532	5	SF	\$150 \$150 \$120	\$1,078,650 \$1,078,650 \$6,903,840	

* To all cost estimates add 10% for soft costs
 ** To all cost estimates add 3.5% compounded annually from the adoption date of this document for inflation

COST ESTIMATING

PROPOSED BUILDINGS - UNIVERSITY COMMON						
BUILDING	SIZE	FLOORS	UNIT	UNIT PRICE	COST	COMMENTS
52	OFF 8,075	5	SF	\$150	\$1,211,250	
	RET 8,075			\$150	\$1,211,250	
	RES 64,604			\$120	\$7,752,480	
53	OFF 4,800	5	SF	\$150	\$720,000	
	RET 4,800			\$150	\$720,000	
	RES 38,400			\$120	\$4,608,000	
54	OFF 4,800	5	SF	\$150	\$720,000	
	RET 4,800			\$150	\$720,000	
	RES 38,400			\$120	\$4,608,000	
55	OFF 8,136	5	SF	\$150	\$1,220,400	
	RET 8,136			\$150	\$1,220,400	
	RES 65,088			\$120	\$7,810,560	
56	OFF 9,147	5	SF	\$150	\$1,372,050	
	RET 9,147			\$150	\$1,372,050	
	RES 73,176			\$120	\$8,781,120	
57	378,595	5	SF	\$225	\$85,183,875	
58	72,000	2	SF	\$225	\$16,200,000	Conference center addition
59	67,500 FP	+/-5	CAR	-	-	Parking Deck: See Parking and Transit: Parking Decks
60	110,881 FP	+/-5	CAR	-	-	Parking Deck: See Parking and Transit: Parking Decks
61	52,500	2	SF	\$120	\$6,300,000	
62	53,335	2	SF	\$120	\$6,400,200	
63	67,875	5	SF	\$265	\$17,986,875	
64	45,165	5	SF	\$265	\$11,968,725	
65	84,755	5	SF	\$265	\$22,460,075	
66	35,420	5	SF	\$265	\$9,386,300	
67	67,160	5	SF	\$265	\$17,797,400	
68	28,935	5	SF	\$265	\$7,667,775	
69	44,690	5	SF	\$265	\$11,842,850	
70	70,005	5	SF	\$265	\$18,551,325	
71	64,440	5	SF	\$265	\$17,076,600	
72	57,645	5	SF	\$265	\$15,275,925	
73	45,000	5	SF	\$265	\$11,925,000	
74	18,000	5	SF	\$265	\$4,770,000	
75	72,775	5	SF	\$265	\$19,285,375	
76	69,000	5	SF	\$265	\$18,285,000	
77	91,570	5	SF	\$265	\$24,266,050	
78	46,500	5	SF	\$265	\$12,322,500	
79	54,000	5	SF	\$265	\$14,310,000	
	79,182 FP	+/-5	CAR	-	-	Parking Deck: See Parking and Transit: Parking Decks

PROPOSED BUILDINGS - UNIVERSITY COMMON						
BUILDING	SIZE	FLOORS	UNIT	UNIT PRICE	COST	COMMENTS
81	30,000	5	SF	\$265	\$7,950,000	
82	45,000	5	SF	\$265	\$11,925,000	
83	18,000	5	SF	\$265	\$4,770,000	
84	66,630	5	SF	\$265	\$17,656,950	
85	62,945	5	SF	\$265	\$16,680,425	
86	37,500	5	SF	\$265	\$9,937,500	
87	225,000	2	SF	\$100	\$22,500,000	
88	42,000	2	SF	\$100	\$4,200,000	
89	30,000	2	SF	\$100	\$3,000,000	
90	45,000	5	SF	\$265	\$11,925,000	
91	18,000	5	SF	\$265	\$4,770,000	
92	45,000	5	SF	\$265	\$11,925,000	

PROPOSED BUILDINGS - ST. LANDRY CORRIDOR						
BUILDING	SIZE	FLOORS	UNIT	UNIT PRICE	COST	COMMENTS
93	92,384	4	SF	\$265	\$24,481,760	
94	34,224	4	SF	\$265	\$9,069,360	
95	110,468	4	SF	\$265	\$29,274,020	
96	29,208	4	SF	\$265	\$7,740,120	
97	58,420	4	SF	\$265	\$15,481,300	
98	125,860	4	SF	\$265	\$33,352,900	
99	40,068	4	SF	\$265	\$10,618,020	
100	44,420	4	SF	\$265	\$11,771,300	
101	67,500 FP	+/-5	CAR	-	-	Parking Deck: See Parking and Transit: Parking Decks
102	RET 9,421	5	SF	\$150	\$1,413,150	
	RES 38,684			\$120	\$4,642,080	
103	RET 10,557	5	SF	\$150	\$1,583,550	
	RES 42,228			\$120	\$5,067,360	
104	55,500	5	SF	\$265	\$14,707,500	
105	4,486	2	SF	\$120	\$538,320	
106	4,486	2	SF	\$120	\$538,320	
107	4,486	2	SF	\$120	\$538,320	
108	4,486	2	SF	\$120	\$538,320	
109	4,486	2	SF	\$120	\$538,320	

* To all cost estimates add 10% for soft costs
 ** To all cost estimates add 3.5% compounded annually from the adoption date of this document for inflation

COST ESTIMATING

PROPOSED BUILDINGS - ST. LANDRY CORRIDOR

BUILDING	SIZE	FLOORS	UNIT	UNIT PRICE	COST	COMMENTS
110	4,486	2	SF	\$120	\$538,320	
111	14,486	2	SF	\$120	\$1,738,320	
112	RET 6,500	5	SF	\$150	\$975,000	
	RES 26,000			\$120	\$3,120,000	
113	RET 4,800	5	SF	\$150	\$720,000	
	RES 19,200			\$120	\$2,304,000	
114	RET 4,800	5	SF	\$150	\$720,000	
	RES 19,200			\$120	\$2,304,000	
115	RET 6,050	5	SF	\$150	\$907,500	
	RES 24,200			\$120	\$2,904,000	

PROPOSED BUILDINGS - MAIN CAMPUS

BUILDING	SIZE	FLOORS	UNIT	UNIT PRICE	COST	COMMENTS
116	RET 14,256	5	SF	\$150	\$2,138,400	
	RES 57,024			\$120	\$6,842,880	
117	RET 12,000	5	SF	\$150	\$1,800,000	
	RES 48,000			\$120	\$5,760,000	
118	RET 10,939	5	SF	\$150	\$1,640,850	
	RES 43,756			\$120	\$5,250,720	
119	31,664 (35 DU)	4	SF	\$120	\$3,799,680	
120	54,236 (61 DU)	4	SF	\$120	\$6,508,320	
121	29,820 (24 DU)	3	SF	\$120	\$3,578,400	
122	31,050 (24 DU)	3	SF	\$120	\$3,726,000	
123	57,980 (48 DU)	4	SF	\$120	\$6,957,600	
124	44,600 (44 DU)	4	SF	\$120	\$5,352,000	
125	29,820 (24 DU)	3	SF	\$120	\$3,578,400	
126	44,600 (44 DU)	4	SF	\$120	\$5,352,000	
127	29,820 (24 DU)	3	SF	\$120	\$3,578,400	
128	108,616 (108 DU)	4	SF	\$120	\$13,033,920	
129	92,868 (100 DU)	4	SF	\$120	\$11,144,160	
130	107,284 (108 DU)	4	SF	\$120	\$12,874,080	
131	80,000	4	SF	\$265	\$21,200,000	
132	36,304 (40 DU)	4	SF	\$120	\$4,356,480	
133	42,376 (44 DU)	4	SF	\$120	\$5,085,120	
134	75,900 FP	+/-4	CAR	-	-	Parking Deck: See Parking and Transit: Parking Decks

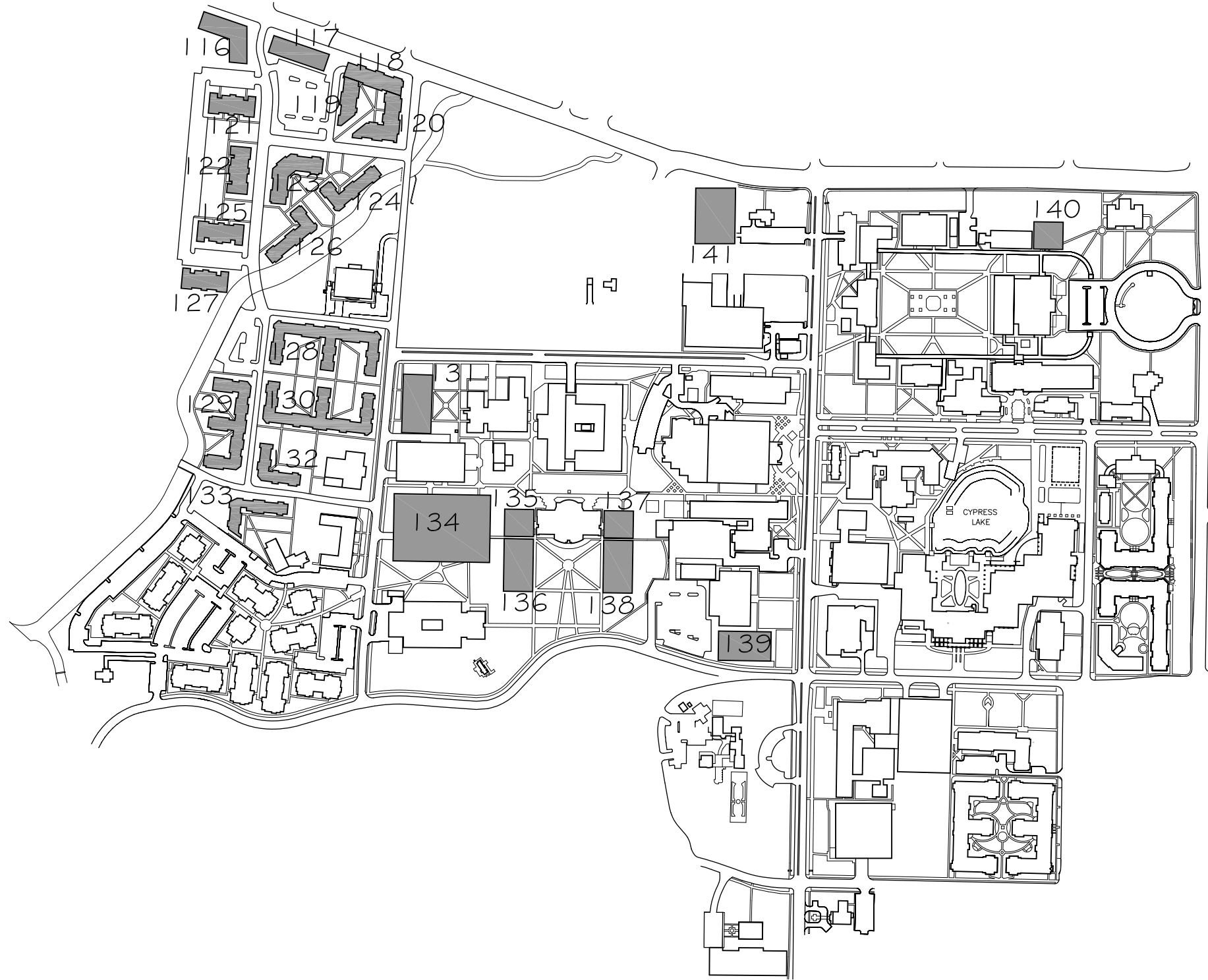
PROPOSED BUILDINGS - MAIN CAMPUS

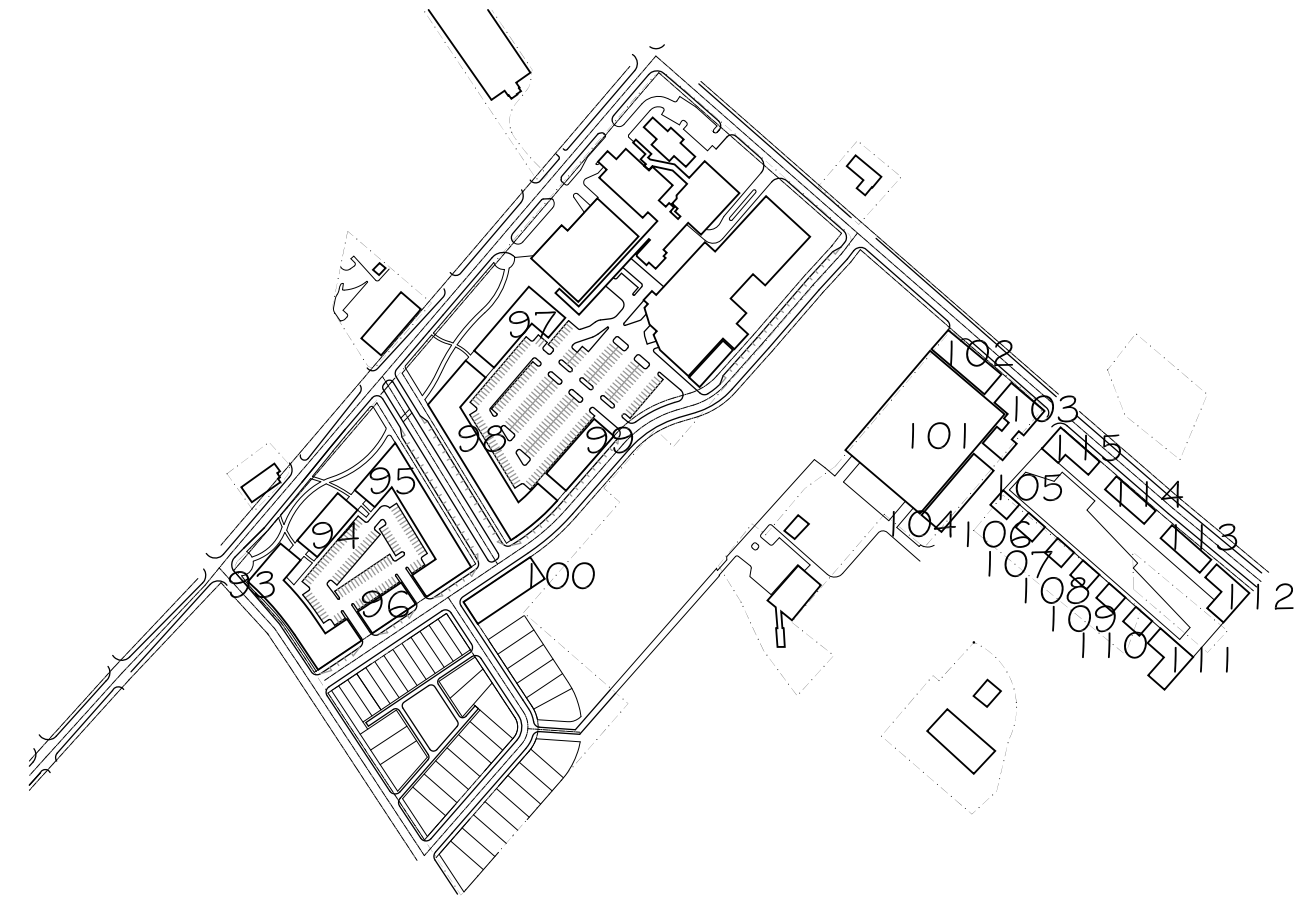
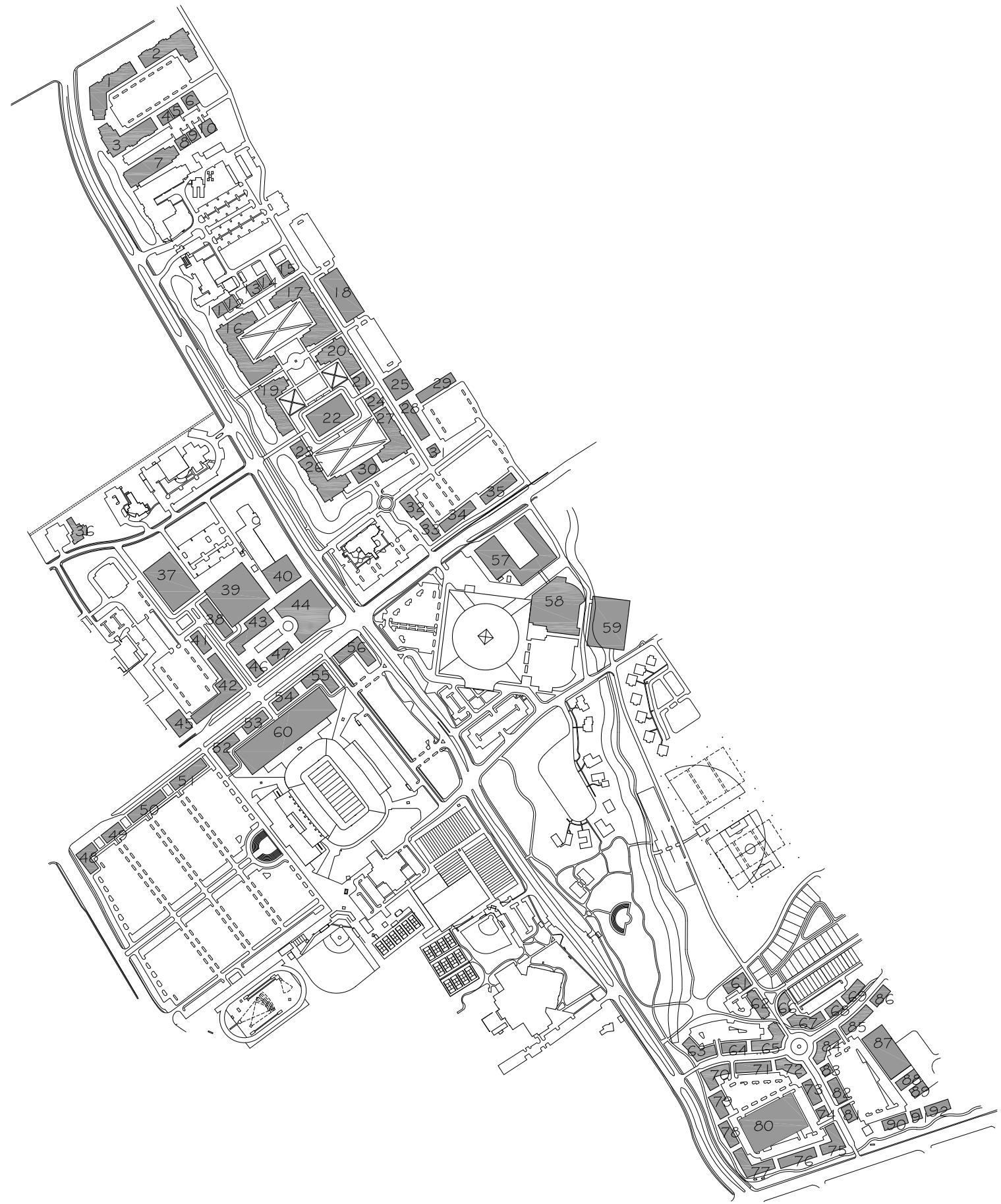
BUILDING	SIZE	FLOORS	UNIT	UNIT PRICE	COST	COMMENTS
135	37,156	4	SF	\$265	\$9,846,340	
136	71,924	4	SF	\$265	\$19,059,860	
137	37,156	4	SF	\$265	\$9,846,340	
138	71,924	4	SF	\$265	\$19,059,860	
139	71,924	4	SF	\$265	\$19,059,860	
140	37,156	4	SF	\$265	\$9,846,340	
141	25,843 FP	+/-4	CAR	-	-	Parking Deck: See Parking and Transit: Parking Decks

* To all cost estimates add 10% for soft costs
 ** To all cost estimates add 3.5% compounded annually from the adoption date of this document for inflation

COST ESTIMATING

PROPOSED BUILDINGS KEY - MAIN CAMPUS





PROPOSED BUILDINGS KEY - UNIVERSITY COMMON

PROPOSED BUILDINGS KEY - ST. LANDRY CORRIDOR

COST ESTIMATING

PARKING AND TRANSIT - PARKING DECKS

CATEGORY/OBJECT	QUANTITY (SPACES)	UNIT	UNIT PRICE	COST	COMMENTS
AT RESEARCH BUILDINGS (18)	600	CAR	14,000	\$8,400,000	
BETWEEN CONGRESS & DEVALCOURT (39)	800	CAR	\$14,000	\$11,200,000	Deck provided by mixed-use developer
BETWEEN CONGRESS & CAJUN FIELD (60)	TBD	CAR	\$14,000		Dependant on Football Stadium expansion
CONVENTION CENTER (59)	1200	CAR	\$13,000	\$15,600,000	
ON ST MARY AT CHERRY (101)	2000	CAR	\$13000	\$26,000,000	New Liner
TULANE	3000	CAR	\$13000	\$39,000,000	New Liner - Does not include land cost
ON JOHNSTON (141)	700	CAR	\$14000	\$9,800,000	
OFF JOHNSTON AT UNIVERSITY COMMON (80)	1200	CAR	13,000	\$15,600,000	
ON E LEWIS (134)	1200	CAR	\$13000	\$15,600,000	
AT MCKINLEY (HOUSING)	2000	CAR	\$13000	\$26,000,000	

PARKING AND TRANSIT - SURFACE PARKING

CATEGORY/OBJECT	SIZE	QUANTITY	UNIT	UNIT PRICE	COST	COMMENTS
MAIN CAMPUS		32,000	SF	\$2	\$64,000	DEMO
ON SOUVENIR GATE		600	CAR	\$2500	\$1,500,000	Existing - Needs Repair

PARKING AND TRANSIT - UNIVERSITY TRANSIT

CATEGORY/OBJECT	SIZE	UNIT	UNIT PRICE	COST	COMMENTS
UNIVERSITY TRAM SYSTEM TOTAL					
STATION 1		EA	\$250,000	\$250,000	
STATION 2		EA	\$250,000	\$250,000	
TRANSITWAY/CAR		EA	\$20,000,000/M	\$20,000,000/M	
STATION		EA	\$5,000,000	\$5,000,000	
NEW UNIVERSITY BUS SYSTEM TOTAL				\$24,000,000	Cost Information provided by UL (includes new bus depot, bus stop, and luxury buses)

THOROUGHFARE NETWORK

CATEGORY/OBJECT	SIZE	UNIT	UNIT PRICE	COST	COMMENTS
AVE 57-30 (ST. JULIEN AVENUE)					
STRIPING (PARKING)		LF	\$2		
STRIPING (BIKEWAY)		LF	\$1		
SIDEWALKS					
SIDEWALK 1		LF	\$20		4' X \$5
SIDEWALK 2		LF	\$40		8' X \$5
BIKEWAY		LF	\$40		8' X \$5
TREE PLANTING		LF	\$60		\$20/LF X 3 TREES
LIGHTING		LF	\$35		
PAVEMENT		LF	\$0		
TOTAL	942	LF	\$198	\$186,516	
AVE 66-40 (UNIVERSITY AVENUE)					
STRIPING (PARKING)		LF	\$2		
STRIPING (BIKEWAY)		LF	\$1		
SIDEWALKS					
SIDEWALK 1		LF	\$5		1' X \$5
SIDEWALK 2		LF	\$10		2' X \$10
BIKEWAY		LF	\$0		
TREE PLANTING		LF	\$20		\$20/LF X 1 SIDE
LIGHTING		LF	\$35		
PAVEMENT		LF	\$0		
TOTAL	1652	LF	\$73	\$120,596	
BLVD 55-32 (ST. MARY BOULEVARD)					
STRIPING (PARKING)		LF	\$1		
STRIPING (BIKEWAY)		LF	\$1		
SIDEWALKS					
SIDEWALK 1		LF	\$50		10' X \$5
SIDEWALK 2		LF	\$40		8' X \$5
BIKEWAY		LF	\$0		
TREE PLANTING		LF	\$40		
LIGHTING		LF	\$35		
PAVEMENT		LF	\$0		
TOTAL	1208	LF	\$167	\$201,736	

* To all cost estimates add 10% for soft costs
 ** To all cost estimates add 3.5% compounded annually from the adoption date of this document for inflation



THOROUGHFARE NETWORK - CONT'D

CATEGORY/OBJECT	SIZE	UNIT	UNIT PRICE	COST	COMMENTS
BLVD 81-12					
STRIPING (PARKING)		LF	\$0		
STRIPING (BIKEWAY)		LF	\$1		
SIDEWALKS					
SIDEWALK 1		LF	\$42.5		8.5' X \$5
SIDEWALK 2		LF	\$42.5		8.5' X \$5
BIKEWAY		LF	\$0		
TREE PLANTING		LF	\$25		
LIGHTING		LF	\$35		1 X \$35
PAVEMENT		LF	\$0		
TOTAL	1466	LF	\$146	\$214,036	
BLVD 83-39 (ST. MARY BOULEVARD)					
STRIPING (PARKING)		LF	\$2		
STRIPING (BIKEWAY)		LF	\$1		
SIDEWALKS					
SIDEWALK 1		LF	\$60		12' X \$5
SIDEWALK 2		LF	\$60		12' X \$5
BIKEWAY		LF	\$0		
TREE PLANTING		LF	\$20		
LIGHTING		LF	\$35		1 X \$35
PAVEMENT		LF	\$0		
BUFFER STRIP		LF	\$25		5' DEMO - \$1/LF ALLOW 12' CURB - \$4/LF
TOTAL	2683	LF	\$203	\$544,649	
BLVD 85-20					
STRIPING (PARKING)		LF			
STRIPING (BIKEWAY)		LF			
SIDEWALKS					
SIDEWALK 1		LF			
SIDEWALK 2		LF			
BIKEWAY		LF			
TREE PLANTING		LF			
LIGHTING		LF			
PAVEMENT		LF			
TOTAL	506	LF	\$1,000	\$506,000	

CATEGORY/OBJECT	SIZE	UNIT	UNIT PRICE	COST	COMMENTS
BLVD 96-19 (HEBRARD BOULEVARD)					
STRIPING (PARKING)		LF	\$0		
STRIPING (BIKEWAY)		LF	\$1		
SIDEWALKS					
SIDEWALK 1		LF	\$30		6' X \$5
SIDEWALK 2		LF	\$30		6' X \$5
BIKEWAY		LF	\$0		
TREE PLANTING		LF	\$40		20 X 2
LIGHTING		LF	\$35		
PAVEMENT		LF	\$0		
TOTAL	1348	LF	\$136	\$183,328	
BLVD 100-24 (CAJUNDOME BOULEVARD)					
STRIPING (PARKING)		LF			
STRIPING (BIKEWAY)		LF			
SIDEWALKS					
SIDEWALK 1		LF			
SIDEWALK 2		LF			
BIKEWAY		LF			
TREE PLANTING		LF			
LIGHTING		LF			
PAVEMENT		LF			
TOTAL	7878	LF	\$0	\$0	NO ANTICIPATED CHANGES
MS 57-36					
STRIPING (PARKING)		LF	\$2		
STRIPING (BIKEWAY)		LF	\$1		
SIDEWALKS					
SIDEWALK 1		LF	\$30		6' X \$5
SIDEWALK 2		LF	\$30		6' X \$5
BIKEWAY		LF	\$40		8' X \$5
TREE PLANTING		LF	\$40		20 X 2
LIGHTING		LF	\$35		
PAVEMENT		LF	\$224		28 X \$8/SF
UTILITIES		LF	\$100		
TOTAL	5632	LF	\$502	\$2,827,264	

* To all cost estimates add 10% for soft costs
 ** To all cost estimates add 3.5% compounded annually from the adoption date of this document for inflation

COST ESTIMATING

THOROUGHFARE NETWORK - CONT'D

CATEGORY/OBJECT	SIZE	UNIT	UNIT PRICE	COST	COMMENTS
MSR 44-28					
STRIPING (PARKING)		LF			
STRIPING (BIKEWAY)		LF			
SIDEWALKS					
SIDEWALK 1		LF			
SIDEWALK 2		LF			
BIKEWAY		LF			
TREE PLANTING		LF			
LIGHTING		LF			
PAVEMENT		LF			
TOTAL	811	LF	\$500	\$405,500	
MSR 60-36					
STRIPING (PARKING)		LF	\$2		
STRIPING (BIKEWAY)		LF	\$1		
SIDEWALKS					
SIDEWALK 1		LF	\$30		
SIDEWALK 2		LF	\$30		
BIKEWAY		LF	\$40		
TREE PLANTING		LF	\$40		
LIGHTING		LF	\$35		
PAVEMENT		LF	\$288		36 X 8
UTILITIES		LF	\$100		
TOTAL	3497	LF	\$561	\$1,961,817	
MW 148-60-20					
STRIPING (PARKING)		LF	\$2		
STRIPING (BIKEWAY)		LF	\$1		
SIDEWALKS					
SIDEWALK 1		LF	\$37.5		7.5' X 5
SIDEWALK 2		LF	\$0		RETAIL SIDEWALKS ARE PART OF RETAIL BLDGS
BIKEWAY		LF	\$0		
TREE PLANTING		LF	\$80		20 X 4
LIGHTING		LF	\$35		
PAVEMENT 1		LF	\$160		20 X 8
PAVEMENT 2		LF	\$160		20 X 8
UTILITIES		LF	\$200		
TOTAL	3848	LF	\$676	\$2,599,324	

CATEGORY/OBJECT	SIZE	UNIT	UNIT PRICE	COST	COMMENTS
OW 34-18					
STRIPING (PARKING)		LF	\$2		
STRIPING (BIKEWAY)		LF	\$0		
SIDEWALKS					
SIDEWALK 1		LF	\$50		10' X 5
SIDEWALK 2		LF	\$0		
BIKEWAY		LF	\$0		
TREE PLANTING		LF	\$40		20' X 2
LIGHTING		LF	\$35		
PAVEMENT		LF	\$144		18 X 8
UTILITIES		LF	\$50		
TOTAL	1009	LF	\$321	\$323,889	NEW
ST 40-24					
STRIPING (PARKING)		LF			
STRIPING (BIKEWAY)		LF			
SIDEWALKS					
SIDEWALK 1		LF			
SIDEWALK 2		LF			
BIKEWAY		LF			
TREE PLANTING		LF			
LIGHTING		LF			
PAVEMENT		LF			
TOTAL	732	LF	\$500	\$366,000	NEW
ST 45-28 (ST. LANDRY STREET)					
STRIPING (PARKING)		LF	\$2		
STRIPING (BIKEWAY)		LF	\$1		
SIDEWALKS					
SIDEWALK 1		LF	\$40		8' X 5
SIDEWALK 2		LF	\$40		8' X 5
BIKEWAY		LF	\$0		
TREE PLANTING		LF	\$40		20 X 2
LIGHTING		LF	\$35		
PAVEMENT		LF	\$24		3' X 8
TOTAL	869	LF	\$182	\$158,158	

* To all cost estimates add 10% for soft costs
 ** To all cost estimates add 3.5% compounded annually from the adoption date of this document for inflation

THOROUGHFARE NETWORK - CONT'D

CATEGORY/OBJECT	SIZE	UNIT	UNIT PRICE	COST	COMMENTS
ST 47-28					
STRIPING (PARKING)					
STRIPING (BIKEWAY)					
SIDEWALKS					
SIDEWALK 1					
SIDEWALK 2					
BIKEWAY					
TREE PLANTING					
LIGHTING					
PAVEMENT					
TOTAL	734	LF	\$500	\$488,000	
ST 48-26 (E. LEWIS STREET)					
STRIPING (PARKING)		LF	\$2		
STRIPING (BIKEWAY)		LF	\$1		
SIDEWALKS					
SIDEWALK 1		LF	\$30		6' X \$5
SIDEWALK 2		LF	\$30		4' X \$5
BIKEWAY		LF	\$0		
TREE PLANTING		LF	\$40		20 X 2
LIGHTING		LF	\$35		
PAVEMENT		LF	\$0		
TOTAL	976	LF	\$138	\$134,688	
ST 49-24					
STRIPING (PARKING)					
STRIPING (BIKEWAY)					
SIDEWALKS					
SIDEWALK 1					
SIDEWALK 2					
BIKEWAY					
TREE PLANTING					
LIGHTING					
PAVEMENT					
TOTAL	1215	LF	\$500	\$607,500	

CATEGORY/OBJECT	SIZE	UNIT	UNIT PRICE	COST	COMMENTS
ST 51-20					
STRIPING (PARKING)		LF	\$2		
STRIPING (BIKEWAY)		LF	\$1		
SIDEWALKS					
SIDEWALK 1		LF	\$50		10' X \$5
SIDEWALK 2		LF	\$50		
BIKEWAY		LF	\$0		
TREE PLANTING		LF	\$40		
LIGHTING		LF	\$35		
PAVEMENT		LF	\$160		
UTILITIES		LF	\$50		
TOTAL	562	LF	\$388	\$218,056	
ST 54-28 (GIRARD PARK CIRCLE)					
STRIPING (PARKING)		LF	\$2		
STRIPING (BIKEWAY)		LF	\$1		
SIDEWALKS					
SIDEWALK 1		LF	\$0		
SIDEWALK 2		LF	\$0		
BIKEWAY		LF	\$0		
TREE PLANTING		LF	\$20		
LIGHTING		LF	\$35		
PAVEMENT		LF	\$0		
TOTAL	2320	LF	\$58	\$134,560	
ST 56-30 (TAFT STREET)					
STRIPING (PARKING)		LF	\$2		
STRIPING (BIKEWAY)		LF	\$1		
SIDEWALKS					
SIDEWALK 1		LF	\$20		
SIDEWALK 2		LF	\$15		
BIKEWAY		LF	\$0		
TREE PLANTING		LF	\$0		
LIGHTING		LF	\$35		
PAVEMENT		LF	\$0		
TOTAL	904	LF	\$73	\$65,992	

* To all cost estimates add 10% for soft costs
 ** To all cost estimates add 3.5% compounded annually from the adoption date of this document for inflation

COST ESTIMATING

THOROUGHFARE NETWORK - CONT'D

CATEGORY/OBJECT	SIZE	UNIT	UNIT PRICE	COST	COMMENTS
ST 57-28 (BOUCHER DRIVE)					
STRIPING (PARKING)		LF	\$2		
STRIPING (BIKEWAY)		LF	\$1		
SIDEWALKS					
SIDEWALK 1		LF	\$20		
SIDEWALK 2		LF	\$15		
BIKEWAY		LF	\$0		
TREE PLANTING		LF	\$40		
LIGHTING		LF	\$35		
PAVEMENT		LF	\$0		
TOTAL	860	LF	\$113	\$97,180	
ST 60-24 (REX STREET)					
STRIPING (PARKING)		LF	\$2		
STRIPING (BIKEWAY)		LF	\$1		
SIDEWALKS					
SIDEWALK 1		LF	\$50		
SIDEWALK 2		LF	\$0		
BIKEWAY		LF	\$60		
TREE PLANTING		LF	\$40		
LIGHTING		LF	\$35		
PAVEMENT		LF	\$0		
BUFFERWAY		LF	\$25		
TOTAL	1439	LF	\$213	\$306,507	
ST 60-27					
STRIPING (PARKING)		LF	\$2		
STRIPING (BIKEWAY)		LF	\$1		
SIDEWALKS					
SIDEWALK 1		LF	\$25		
SIDEWALK 2		LF	\$25		
BIKEWAY		LF	\$0		
TREE PLANTING		LF	\$40		
LIGHTING		LF	\$35		
PAVEMENT		LF	\$0		
TOTAL	1411	LF	\$128	\$180,608	

CATEGORY/OBJECT	SIZE	UNIT	UNIT PRICE	COST	COMMENTS
ST 63-22 (MCKINLEY STREET)					
STRIPING (PARKING)		LF	\$2		
STRIPING (BIKEWAY)		LF	\$1		
SIDEWALKS					
SIDEWALK 1		LF	\$40		
SIDEWALK 2		LF	\$40		
BIKEWAY		LF	\$0		
TREE PLANTING		LF	\$40		
LIGHTING		LF	\$35		
PAVEMENT		LF	\$0		
TOTAL	968	LF	\$158	\$152,944	
ST 64-24					
STRIPING (PARKING)					
STRIPING (BIKEWAY)					
SIDEWALKS					
SIDEWALK 1					
SIDEWALK 2					
BIKEWAY					
TREE PLANTING					
LIGHTING					
PAVEMENT					
TOTAL	4111	LF	\$500	\$2,055,500	
ST 66-26 (E. LEWIS STREET)					
STRIPING (PARKING)		LF	\$2		
STRIPING (BIKEWAY)		LF	\$1		
SIDEWALKS					
SIDEWALK 1		LF	\$25		
SIDEWALK 2		LF	\$25		
BIKEWAY		LF	\$0		
TREE PLANTING		LF	\$40		
LIGHTING		LF	\$35		
PAVEMENT		LF	\$0		
TOTAL	1205	LF	\$128	\$154,240	

* To all cost estimates add 10% for soft costs
 ** To all cost estimates add 3.5% compounded annually from the adoption date of this document for inflation

THOROUGHFARE NETWORK - CONT'D

CATEGORY/OBJECT	SIZE	UNIT	UNIT PRICE	COST	COMMENTS
ST 71-44 (ST. LANDRY STREET)					
STRIPING (PARKING)		LF	\$2		
STRIPING (BIKEWAY)		LF	\$2		
SIDEWALKS					
SIDEWALK 1		LF	\$40		8' X \$5
SIDEWALK 2		LF	\$25		5' X \$5
BIKEWAY		LF	\$0		
TREE PLANTING		LF	\$40		
LIGHTING		LF	\$35		
PAVEMENT		LF	\$0		
TOTAL	1546	LF	\$144	\$222,624	

BIKE AND PEDESTRIAN

CATEGORY/OBJECT	SIZE	QUANTITY	UNIT	UNIT PRICE	COST	COMMENTS
BIKE NETWORK						
BIKE RACKS W/O COVER	N/A	115	EA	\$350	\$40,250	
BIKE RACK AREAS W/ COVER	N/A	130	EA	\$350	\$45,500	10 racks per parking area
COVER FOR BIKE PARKING	300	13	SF	\$250	\$975,000	
BIKE STATION		4	EA	\$250,000	\$1,000,000	
BIKE LOCKERS	N/A	5	EA	\$13500	\$67,500	10 bike locker unit
SIGNAGE (WAYFINDING)	N/A	100	EA	\$2500	\$250,000	

PEDESTRIAN PASSAGES

PASSAGE A	SIZE	UNIT	UNIT PRICE	COST	COMMENTS
PASSAGE A.1 - MAIN CAMPUS					
PAVING		LF	\$0		PART OF BUILDING PACKAGE
ARCADE EXPANSION		LF	\$0		PART OF BUILDING PACKAGE
LANDSCAPING		LF	\$20		
SITE FURNITURE		LF	\$50		
SITE PREP.		LF	\$20		
TOTAL	5700	LF	\$90	\$513,000	

PEDESTRIAN PASSAGES

PASSAGE A	SIZE	UNIT	UNIT PRICE	COST	COMMENTS
PASSAGE A.2 - MAIN CAMPUS					
PAVING			\$75		
ARCADE EXPANSION			\$525		
LANDSCAPING			\$20		
SITE FURNITURE			\$50		
SITE PREP.			\$20		
TOTAL	700	LF	\$690	\$483,000	
PASSAGE A.3					
PAVING		LF	\$80		
LANDSCAPING		LF	\$20		
SITE FURNITURE		LF	\$50		
SITE PREP.		LF	\$10		
TOTAL	3050	LF	\$160	\$488,000	
PASSAGE B	SIZE	UNIT	UNIT PRICE	COST	COMMENTS
MAIN CAMPUS					
PAVING		LF	\$50		
LANDSCAPING		LF	\$20		
SITE FURNITURE		LF	\$50		
SITE PREP.		LF	\$10		
TOTAL	2,200	LF	\$130	\$286,000	
UNIVERSITY COMMONS					
PAVING		LF	\$50		
LANDSCAPING		LF	\$20		
SITE FURNITURE		LF	\$50		
SITE PREP.		LF	\$10		
TOTAL	1,600	LF	\$130	\$208,000	
PASSAGE C	SIZE	UNIT	UNIT PRICE	COST	COMMENTS
PATH OF KNOWLEDGE					
PAVING		LF	\$40		
LANDSCAPING		LF	\$10		
SITE FURNITURE		LF	\$35		
SITE PREP.		LF	\$10		
AMPHITHEATER				\$3,000,000	Outdoor Amphitheater
TOTAL	5,000	LF	\$95	\$3,475,000	

* To all cost estimates add 10% for soft costs
 ** To all cost estimates add 3.5% compounded annually from the adoption date of this document for inflation