

# *State of the University*

September 22, 2021







SLII FIRST FACULTY, 1901



SLII FIRST GRADUATING CLASS, 1903



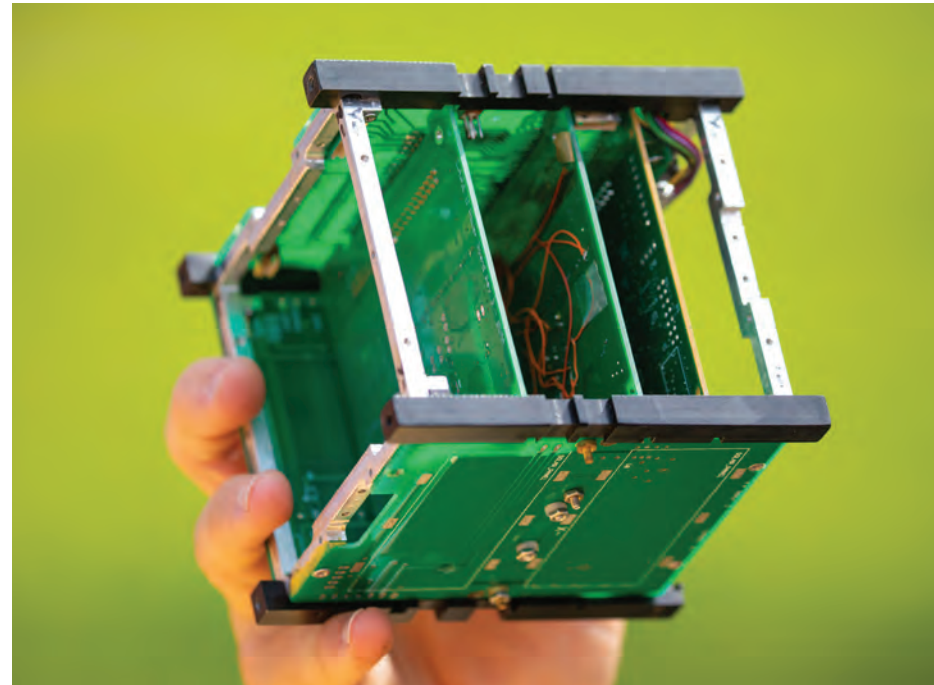


# A RECORD-SETTING YEAR

## PHILANTHROPY



## RESEARCH



## ATHLETICS





# A CARING COMMUNITY







# *In Memoriam*

**David Michael Babineaux**

Facility Management  
HVAC Superintendent

**Samanatha Ann Cassanova**

Senior  
College of Nursing & Allied Health Professions  
RN to BSN

**Ian Alexander Doherty**

Junior  
College of Nursing & Allied Health Professions  
Nursing

**Dr. Maurice W. duQuesnay**

College of Liberal Arts  
Associate Professor/English Department





**Carolyn Dural**

College of Liberal Arts  
Assistant Dean

**Abigail Mbede Ebere**

Senior  
Ray P. Authement College of Sciences  
Biology

**Marcus Scott Hair**

Senior  
B.I. Moody III College of Business Administration  
Professional Land & Resource Management

**Arisa Ernestine Jones**

Senior  
College of Liberal Arts  
Child & Family Studies





**John Robert Jones**

Graduate Student  
School of Architecture and Design  
Architecture

**David "DJ" Dewayne Looney**

Athletics  
Assistant Football Coach

**Katie Rae Louviere**

Global Engagement Division

**Audrette Metoyer**

Graduate Student  
College of Education  
Educational Leadership

**André Christopher Touchet**

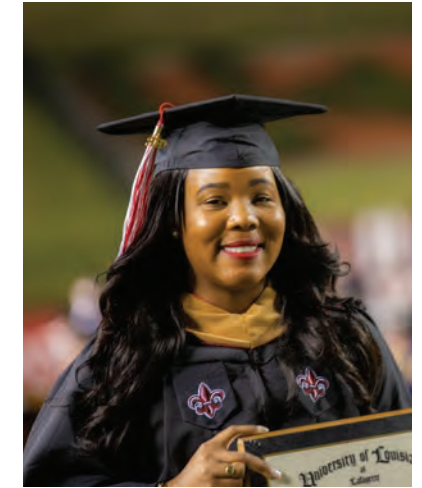
Senior  
College of Engineering  
Industrial Technology



Degrees Conferred  
2020-2021 ACADEMIC YEAR

3,592

*- the 2<sup>nd</sup> largest conferred in an academic year.*

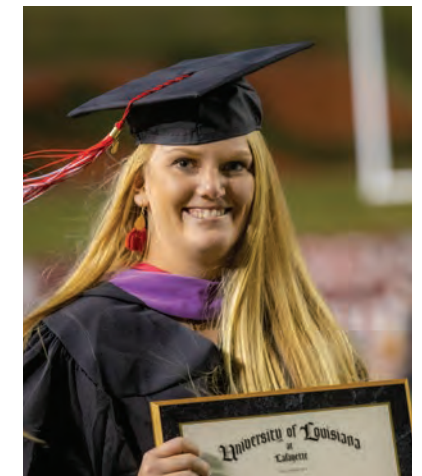


INCLUDING A RECORD NUMBER OF  
GRADUATE DEGREES OVERALL

MASTER'S  
731

DOCTORAL  
78

*and*



A RECORD NUMBER OF

MASTER'S  
131

DOCTORAL  
16

DEGREES AWARDED  
TO BLACK GRADUATES

*- the most awarded in a single academic year.*





Degrees Conferred  
2020-2021 ACADEMIC YEAR

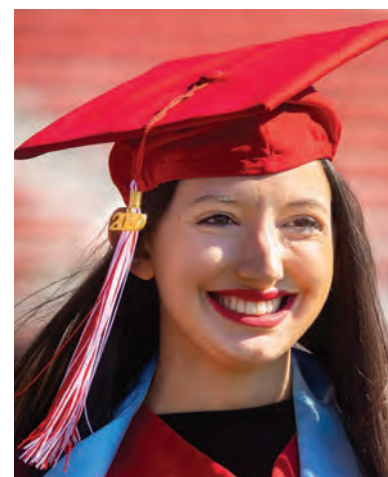
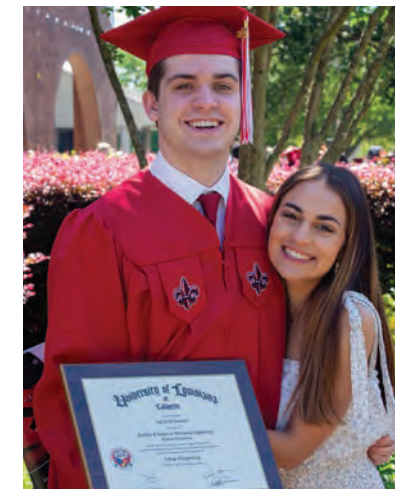
3,592

*- the 2<sup>nd</sup> largest conferred in an academic year.*

A RECORD NUMBER OF  
DEGREES AWARDED TO

HISPANICS  
207

ASIAN  
101







# FULL-TIME RETENTION

— *a record high* —

FALL 2018

**75%**

FALL 2019

**76%**

FALL 2020

**79%**







# GRADUATION RATE

— *the highest in a decade* —

FALL 2017

**44%**

FALL 2018

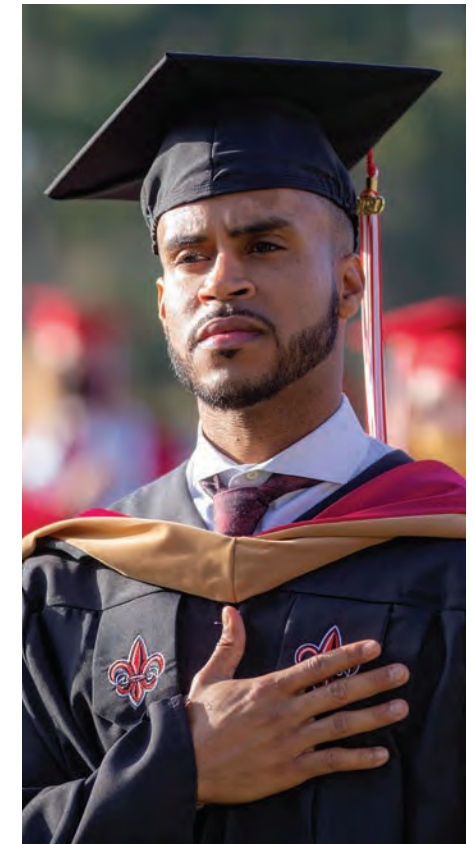
**48%**

FALL 2019

**51%**

FALL 2020

**51%**





# IN ALIGNMENT WITH THE STRATEGIC PLAN FOR INCLUSIVE EXCELLENCE, THE UNIVERSITY IN 2020-2021

Marked Juneteenth as a holiday for the first time.

Launched the Educating for Equity Fellows Program.

Underwent an institutional self-assessment, as part of the Aspire Alliance iChange Network.

Broadened the First to Geaux and Louisiana Educate programs to support first-generation students and those from underrepresented groups.

Established DEI advisory councils in the Graduate School and College of the Arts.

Began the diversity strategic planning process in the College of Nursing & Allied Health Professions.



**4X WINNER** **HIGHER EDUCATION EXCELLENCE IN DIVERSITY AWARD**

READ THE PLAN AT  
**DIVERSITY.LOUISIANA.EDU**



# NIRC role in creation of Pfizer-BioNTech vaccine



**New Iberia Research Center**



# ✓ Don't wait. VACCINATE!



Students vaccinated against COVID-19 are eligible to win one of 10 prizes in the University's "Don't Wait. Vaccinate!" incentives program.

[louisiana.edu/vaccinate](https://louisiana.edu/vaccinate)



## UNIVERSITY OF LOUISIANA LAKE CHARLES DEPARTMENT OF HEALTH GET THE PFIZER VACCINE ON CAMPUS

Tuesday, Aug. 24 & Wednesday, Aug. 25  
9 a.m.-3 p.m.  
Student Union Atchafalaya Ballroom

By appointment only.



## ✓ Don't wait. VACCINATE!

COVID-19 VACCINATION  
AND TESTING AT  
BURKE-HAWTHORNE HALL

Monday-Friday  
8:00 a.m.-6:00 p.m.

For more information  
[louisiana.edu/CovidClinic](https://louisiana.edu/CovidClinic)





# A HISTORIC YEAR FOR PHILANTHROPY

**\$56.6** *million*  
IN GIFTS AND PLEDGES

↑ 215%  
*over last year*

↑ 136%  
*over previous record of \$24 million*  
2017

**INCLUDING THE LARGEST GIFTS IN UNIVERSITY HISTORY**

**\$20** *million*  
FROM LHC GROUP TO THE COLLEGE OF  
NURSING AND ALLIED HEALTH PROFESSIONS



**\$15** *million*  
FROM OUR LADY OF LOURDES REGIONAL MEDICAL CENTER  
TO LOUISIANA RAGIN' CAJUNS ATHLETICS





# PHILANTHROPY

**\$15.2  
MILLION**

Support to academic and athletic programs from donors, alumni and friends in FY 2020-2021

## ENDOWED GIFTS MANAGED BY UL LAFAYETTE FOUNDATION

provided  
**1,177**  
students with  
scholarships.

supported  
**305**  
endowed chairs  
and professorships.

## THE UL LAFAYETTE FOUNDATION ENDED THE FISCAL YEAR WITH

**\$233 MILLION**  
IN ENDOWED INVESTMENTS  
**↑ \$48 MILLION**  
*over last year*







# 2020 FOOTBALL SEASON

RANKED **#15** in the nation **6.7** MILLION TV VIEWERS **30.5** MILLION FOOTBALL SOCIAL MEDIA IMPRESSIONS

*second straight* **10 WIN SEASON**



**1<sup>ST</sup> PLACE**

WEST DIVISION OF THE SUN BELT  
WOMEN'S BASKETBALL



**2<sup>ND</sup> PLACE**

WEST DIVISION OF THE SUN BELT  
VOLLEYBALL • SOCCER • MEN'S BASKETBALL



**1<sup>ST</sup> PLACE**

WEST DIVISION OF THE SUN BELT  
BASEBALL



**4.8** MILLION Average number of page views on **RAGINCAJUNS.COM** each year **SINCE 2018**

**3.358** FALL 2020 STUDENT-ATHLETE OVERALL GPA **THE HIGHEST IN PROGRAM HISTORY**

**4** SUN BELT CONFERENCE **CHAMPIONSHIPS** 2020-21



# A COMMITMENT TO SUSTAINABILITY

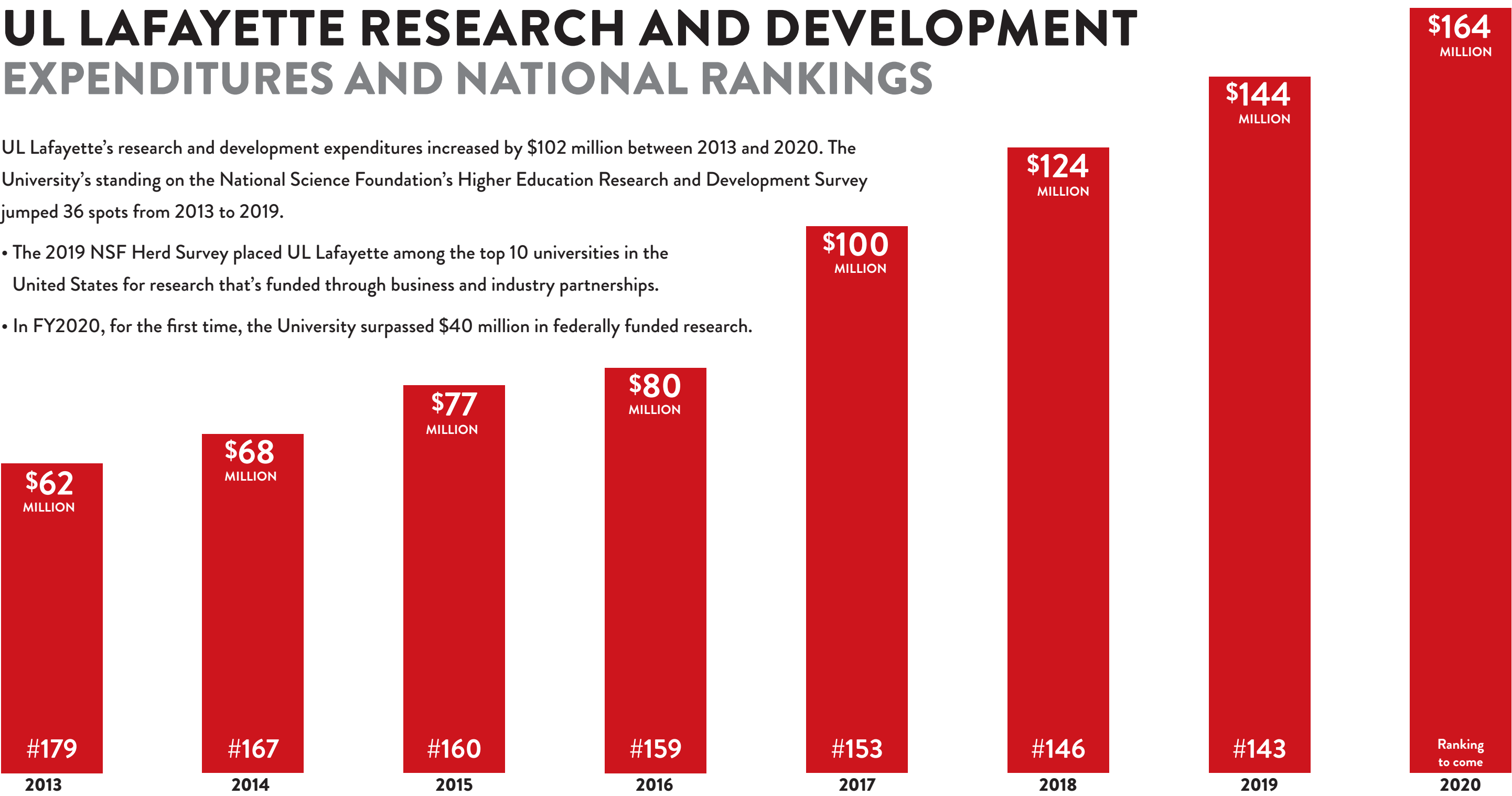




# UL LAFAYETTE RESEARCH AND DEVELOPMENT EXPENDITURES AND NATIONAL RANKINGS

UL Lafayette’s research and development expenditures increased by \$102 million between 2013 and 2020. The University’s standing on the National Science Foundation’s Higher Education Research and Development Survey jumped 36 spots from 2013 to 2019.

- The 2019 NSF Herd Survey placed UL Lafayette among the top 10 universities in the United States for research that’s funded through business and industry partnerships.
- In FY2020, for the first time, the University surpassed \$40 million in federally funded research.





# SERVING OUR COMMUNITY



## RACE & SOCIAL JUSTICE A THREE-DAY COMMUNITY CONVERSATION



**SEPTEMBER 8-10**



TO REGISTER, VISIT:  
[LIBRARY.LOUISIANA.EDU/WHOGETSTOVOTE](http://LIBRARY.LOUISIANA.EDU/WHOGETSTOVOTE)





# ADVANCE

STUDENT RESEARCH EXPERIENCE

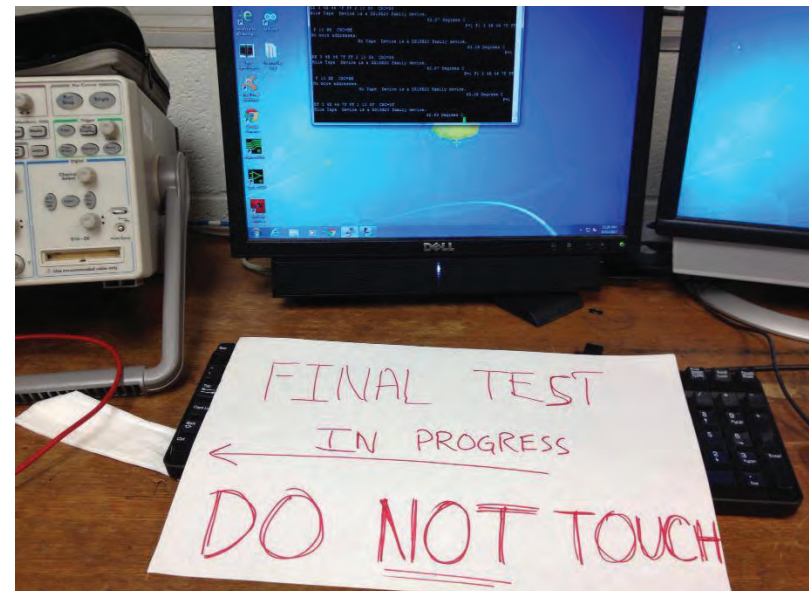


## University of Louisiana at Lafayette Quality Enhancement Plan 2020

Developed by the University of Louisiana at Lafayette  
in preparation for reaffirmation of accreditation by the  
Southern Association of Colleges and Schools Commission on Colleges

Advance is an undergraduate research program that aims to provide every student an opportunity to complete Student Research Experiences.

Student Research Experiences empower students with the knowledge, skills and abilities they need to complete large-scale research and creative projects.





# FALL 2021 ENROLLMENT

↑ FRESHMEN

= TRANSFERS

↑ GRADUATE  
STUDENTS

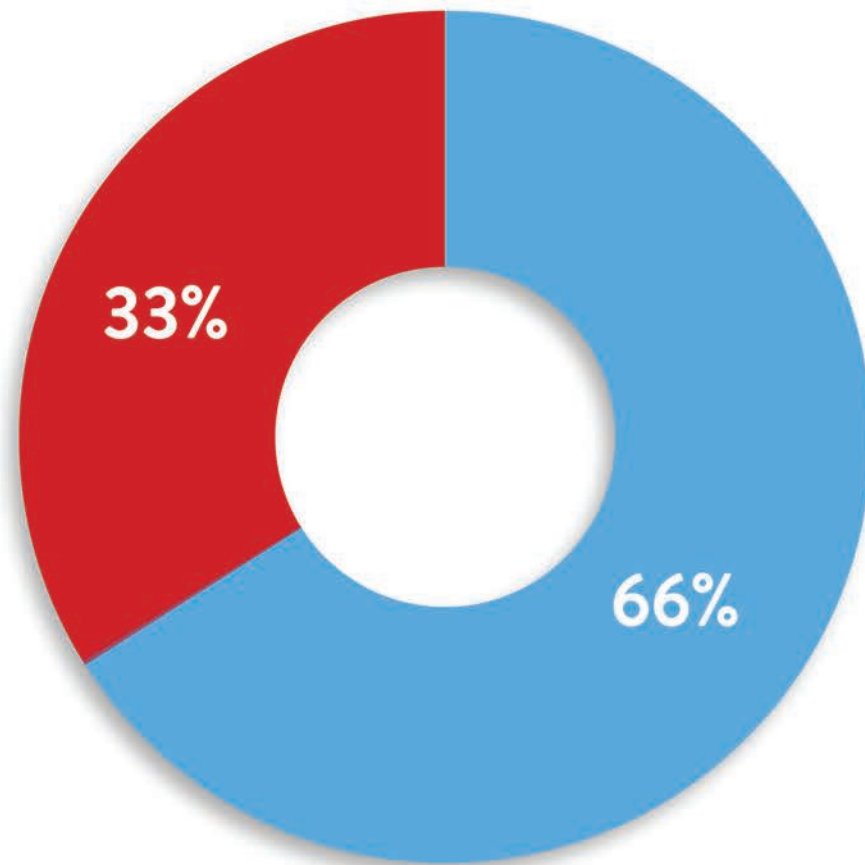
↓ CONTINUING  
STUDENTS



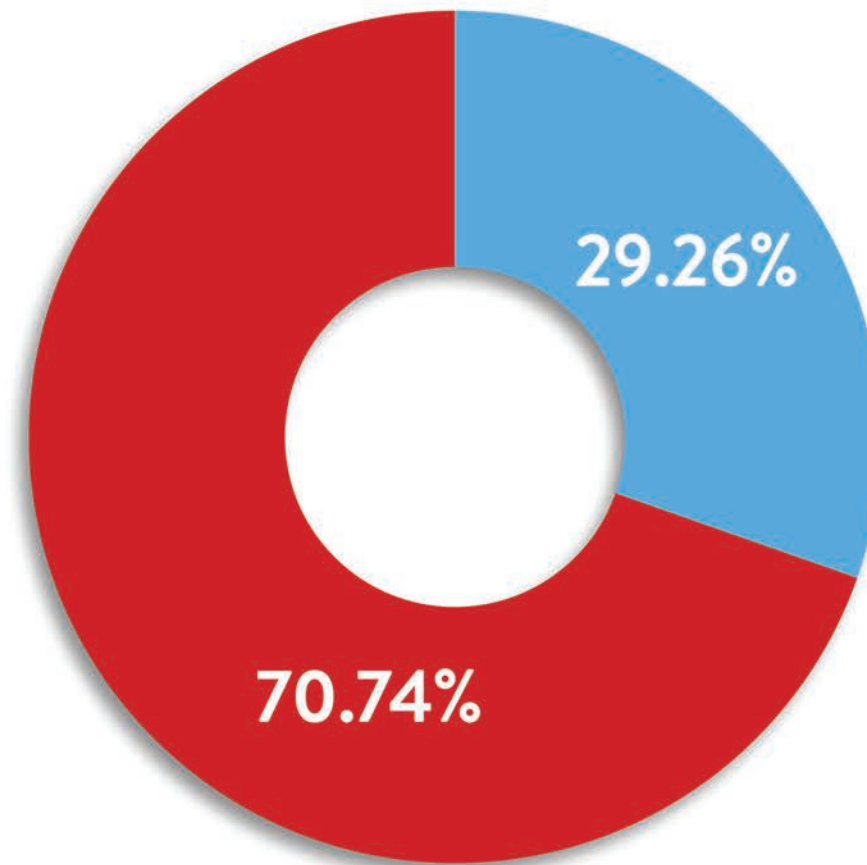


# OPERATING BUDGET

## STATE VS. UNIVERSITY GENERATED



FY 08 – 09



FY 21 – 22





# LEGISLATIVE SUCCESSES

---

## FULLY FUNDED TOPS



## BUILDING IMPROVEMENTS

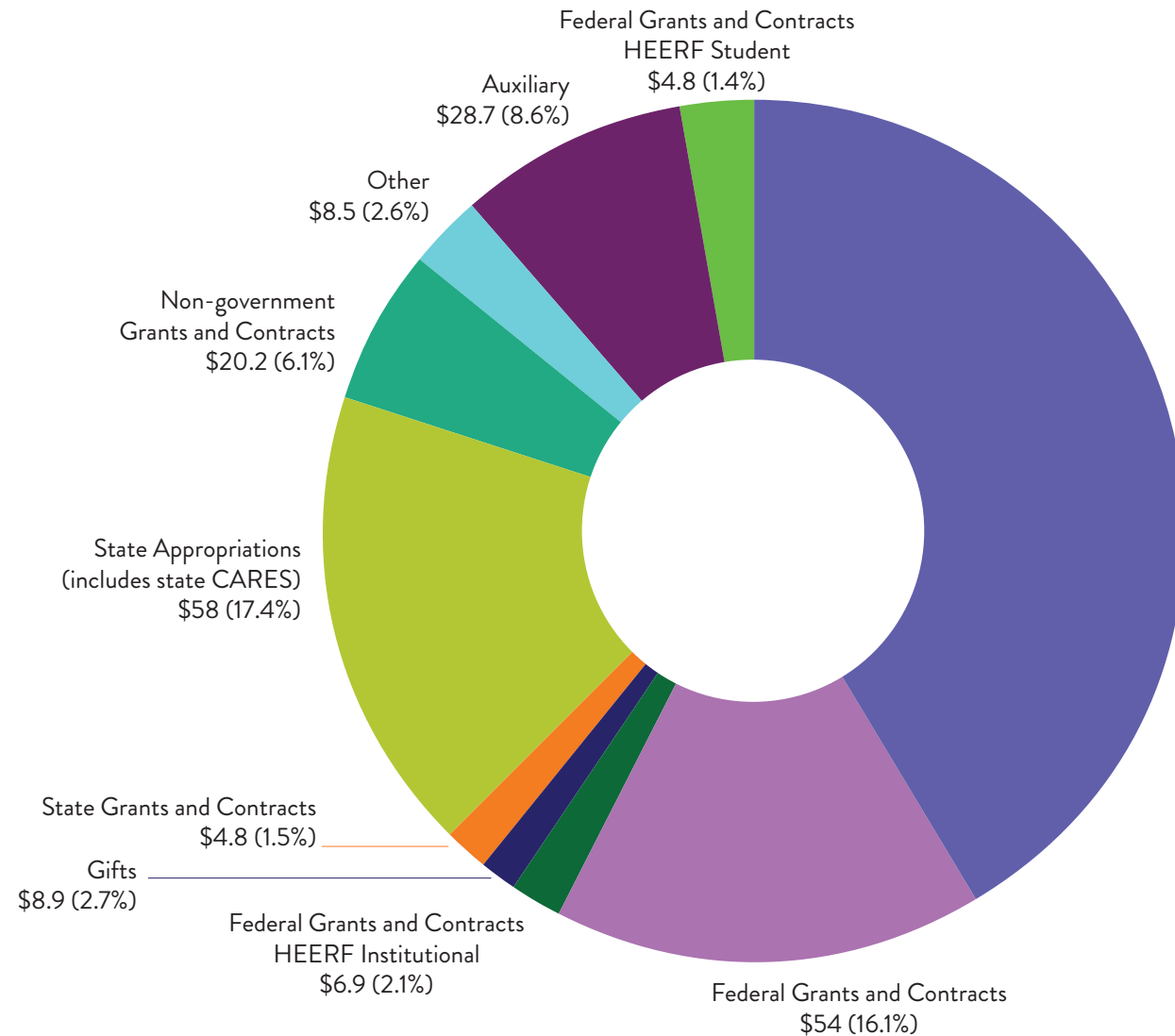


## FACULTY AND STAFF SALARY INCREASES



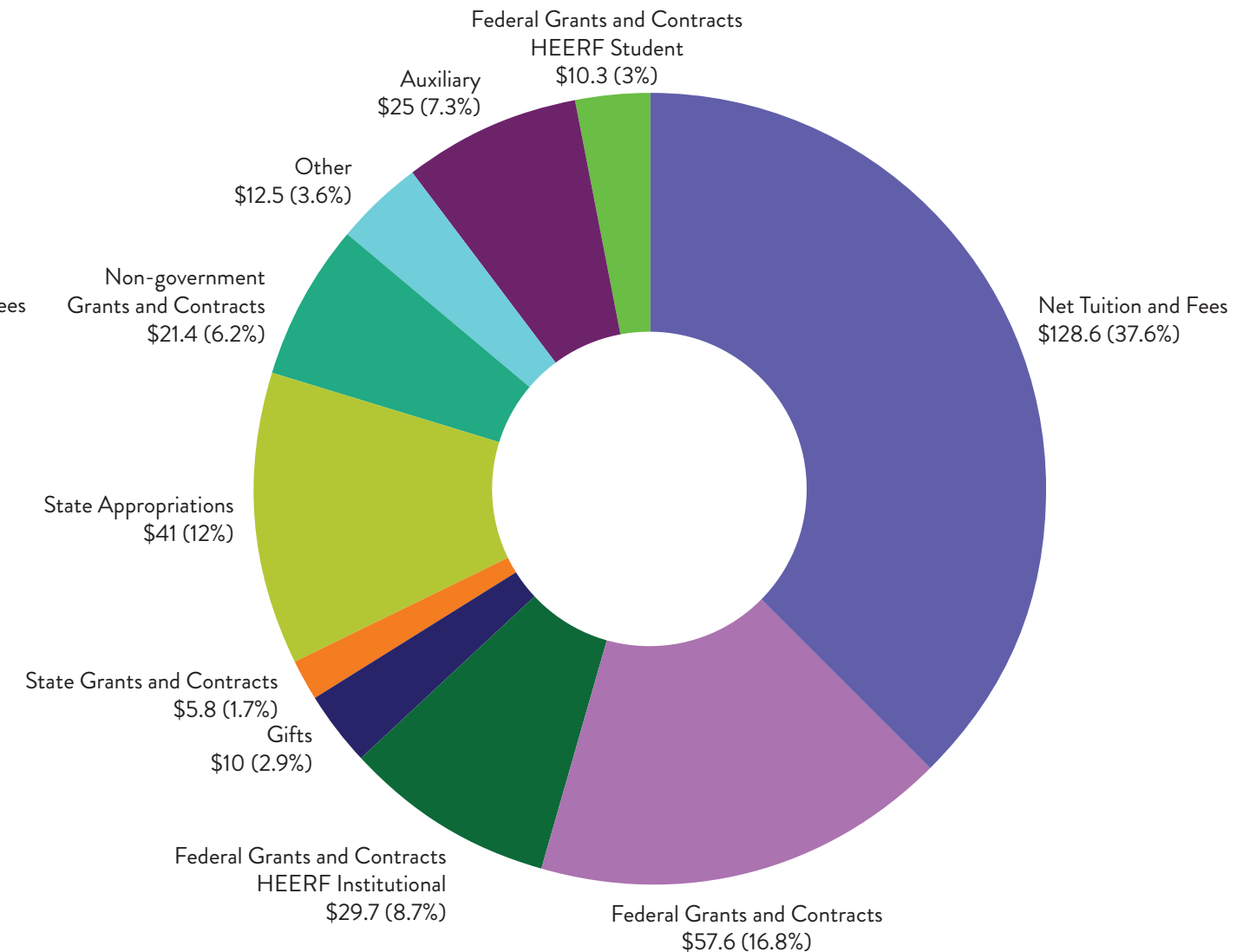


# OVERALL REVENUES



**FY20**

TOTAL REVENUE \$333 MILLION



**FY21**

TOTAL REVENUE \$342 MILLION



# HOW HEERF FUNDING WAS USED IN FY21

## STUDENT BENEFIT

Grants.....\$10,290,004

## INSTITUTIONAL BENEFIT

Revenue losses..... \$26,312,438.95  
Discharge of Student Debt ..... \$2,698,407.31  
Expenses (PPE, testing, student quarantine costs).....\$709,926.09  
\$29,720,772.35

**TOTAL UNIVERSITY HEERF FUNDING**  
**\$40,010,776.35**



# STRATEGIC PLANNING





# RANKINGS & RECOGNITIONS

## *Congratulations and Thank You!*



Dr. Paula Zeanah selected as American Academy of Nursing Fellow



College of Sciences faculty members Dr. Nicholas Kooyers, Dr. Mohsen Amini Salehi and Dr. James Nelson receive NSF CAREER Awards



Dr. Nathan Rabalais' *Finding Cajun* documentary premieres



UL Press joins Association of University Presses



UL System recognizes Dr. Caroline Jurisch as 2020 Champion of Diversity and Inclusion



# RANKINGS & RECOGNITIONS

## *Congratulations and Thank You!*

Designated a  
Bicycle Friendly  
University  
by League  
of American  
Bicyclists



University recognized among nation's Military Friendly Schools



Louisiana's top university for online bachelor's programs for the fifth consecutive year, according to *U.S. News & World Report*



The Association to Advance Collegiate Schools of Business extends accreditation for business and accounting programs



Designated Tree  
Campus USA by  
the Arbor Day  
Foundation for the  
11th consecutive year



# RANKINGS & RECOGNITIONS

## *Congratulations and Thank You!*



University formalizes partnership with Tunica-Biloxi Tribe of Louisiana



UNIVERSITY of  
**LOUISIANA**  
L A F A Y E T T E

**Kathleen Babineaux Blanco**  
Public Policy Center



Blanco Public Policy Center and One  
Acadiana launch strategic partnership



Dr. Terrence Chambers appointed to  
Louisiana Climate Initiatives Task Force





# RANKINGS & RECOGNITIONS

## *Congratulations and Thank You!*

---



Dr. Melissa Lewis  
among Society  
for College  
and University  
Planning's inaugural  
Emerging Leaders  
cohort



Dr. Anita Hazelwood  
appointed to second  
term as chair of the  
Health Information  
Management  
Accreditation  
Council



Dr. Aimee Barber  
wins Association  
of Teacher  
Educators'  
Distinguished  
Dissertation in  
Teacher Education  
Award



University among the top 19 percent  
of the nation's four-year colleges for  
undergraduate education

*The Princeton Review*

