

# Summer & Fall 2026 Advisor Training

## May 6, 2026

Dr. Beth Giroir	Executive Director of Student Success
Dr. Andy Benoit	Vice President of Student Success
Dr. Dianne Olivier	Vice Provost
Amy DesOrmeaux	University Registrar
Dr. Emily Sandoz	University Honors Program
Lana Rodriguez	Academic Success Center

Use TEAMS? To receive important Registrar updates via TEAMS, click this link to join the REGO Reminders group. [General | REGO Reminders](#)

### **Freshman Orientation:**

<https://louisiana.edu/orientation/students/freshman-orientation>

### **Transfer & Adult Orientation:**

<https://louisiana.edu/orientation/students/transfer-student-orientation>

### **Advising & Registration:**

**Freshman & Adult** – advised and complete the registration process at Orientation.

**Transfer** – eligible to be advised and complete the registration process before attending an Orientation session.

### **NOTES:**



# SUMMER & FALL 2026 ORIENTATION

## FRESHMAN ORIENTATION *(Max: 325 Students)*

**Advising Dismissal Time: 3:00 PM**

<b>Date</b>	<b>Session</b>
May 26	Early Orientation & Summer Session 1
May 27	Early Orientation & Summer Session 2
June 16	Fall Session 1
June 17	Fall Session 2
June 24	Fall Session 3
June 25	Fall Session 4
July 15	Fall Session 5
July 16	Fall Session 6
July 27	Fall Session 7
July 28	Fall Session 8

### Registration Locations

**Arts:** Fletcher 209G

**Business & Education:** Moody 106

**Liberal Arts & Nursing:** Dupre Library, first floor lab

**Engineering:** CLR 210

**Sciences & PDH:** OLVR 106

**Student Athletes:** SAAC – Dupre Library 351

---

## TRANSFER & ADULT ORIENTATION *(Max: 175 Students)*

**Advising Dismissal Time: 2:00 PM**

<b>Date</b>	<b>Session</b>
June 2	Summer & Fall Session 1
June 23	Fall Session 2
July 14	Fall Session 3

### Registration Locations

**Arts:** Fletcher 209G

**Business, Education, Liberal Arts, Nursing, PDH, UC:** Dupre Library first floor lab

**Engineering:** CLR 210

**Sciences:** OLVR 106

**Student Athletes:** SAAC – Dupre Library 351

---

## LATE ORIENTATION (First Time Freshman, Transfer, Adult)

**Advising Dismissal Time: 2:00 PM**

<b>Date</b>	<b>Session</b>
June 2	Late Summer
August 18	Late Fall

### Registration Locations

**Arts:** Fletcher 209G

**Business, Education, Liberal Arts, Nursing, PDH, UC:** Dupre Library, first floor lab

**Engineering:** CLR 210

**Sciences:** OLVR 106

**Student Athletes:** SAAC – Dupre Library 351

## Summer 2026 Advising & Registration Reminders:

Freshman Orientation **rosters** are emailed from Francine Prudhomme. The rosters include ULID, name, preferred name, major/concentration, Accuplacer, ACT, SAT, Final HS GPA, ALEKS and college credit posted to the UL transcript. Check each roster, as testing scores and earned credit is updated often and students are allowed to request a change of major during the check-in process.

### Orientation roster email schedule:

1. 3 - 4 business days prior to the scheduled session
2. Orientation day by 10:30 am (once all change of major requests are processed)

**Academic Success Center** – advises students that qualify for enrollment into co-requisite Math and/or English courses based on ACT/SAT scores (excluding College of the Arts & Nursing & Health Sciences majors). Students highlighted in **YELLOW** on the Orientation roster are advised by the ASC.

**College Town Hall and Academic Advising** – Academic Advising will begin at the conclusion of the College Town Hall presentation (2:30 – 3:00 pm).

**Blue advising forms:** Blue advising forms are available in the Academic Success Center (Lee Hall, room 115) for FTF advising during Orientation. Forms can be picked up in Lee Hall or will be delivered to the Academic College. Email [success@louisiana.edu](mailto:success@louisiana.edu) to request forms.

Each student must have a completed and signed advising form.

1. All FTF students are required to complete **UNIV 100 or UNIV 115 (Honors First Year Seminar)**. It is suggested that the course is completed in the first semester. (If the student completed a 3-credit hour course equivalent through dual enrollment, they are NOT required to retake the course.)
2. 12 credit hours = full-time (**\*recommended hours = 15**)
3. Always include 2 – 3 additional subject specific course options for students.
4. Listed course options should reflect courses with open seats.

A 2.5 hour time block is allocated for advising **and** registration. Please allow sufficient time for students to complete the course registration process.

**College Credit** – high school students earn college credit through

- Testing Scores: ACT and SAT (English and Math subscores)
- AP/CLEP: AP scores are received in July and posted to student transcript (ASC reaches out to students that are enrolled in a course but credit was posted).
- Dual Enrollment: college credit earned in high school – official transcripts must be received from credit awarding institution (not high school transcript or transcript student delivers to campus)

**Orientation email reminders** to advisors will be sent prior to each freshman session from the Academic Success Center (Lana Rodriguez). Information regarding course availability and general Orientation updates are included. A course availability file will be included.

**ALEKS PPL** – math placement web-based assessment primarily for students in STEM majors. Additional information: [math.louisiana.edu](http://math.louisiana.edu)

**CPoS – Course Program of Study** – federal financial aid eligibility based on courses required in students declared major, concentration and/or minor. Funding is determined by how courses satisfy degree requirements in Degree Works (all pre-requisite and co-requisite courses for courses in the declared major are eligible for federal funding).

**Ghost students:**

- Multi-million dollar fraud scheme targeting higher education
- Scammers use fake, stolen to apply for admission, enroll in classes, apply for federal financial aid
- Primary goal is to obtain federal pell grants, student loans or other financial assistance and then disappear once the aid is disbursed.
- Ghost students enroll primarily in online programs and courses and even appear to be active in the course by submitted AI generated assignments.
- Impacts enrollment in courses as seats are taken by the ghost students and individuals whose identities are stolen may owe thousands of dollars to the US Department of Education.
- Team of University personnel are working to develop a process so that we can identify these students prior to advising/enrollment/ financial aid disbursement.
- Persistent, demanding students requesting quick answers – possibly ghost student
- Lack of interest, involvement in learning, missing assignments, no participation – disengaged student

**Best practice for advising:** in person advising for all campus-based degree programs. For online majors, a **live video** requirement for academic advising.

**Student Non-payment for Fall 2026** - students will receive email communication if flagged for non-pay. Registered for courses and have not paid, made arrangement to pay or have no anticipated aid, classes will be purged prior to the start of the semester.

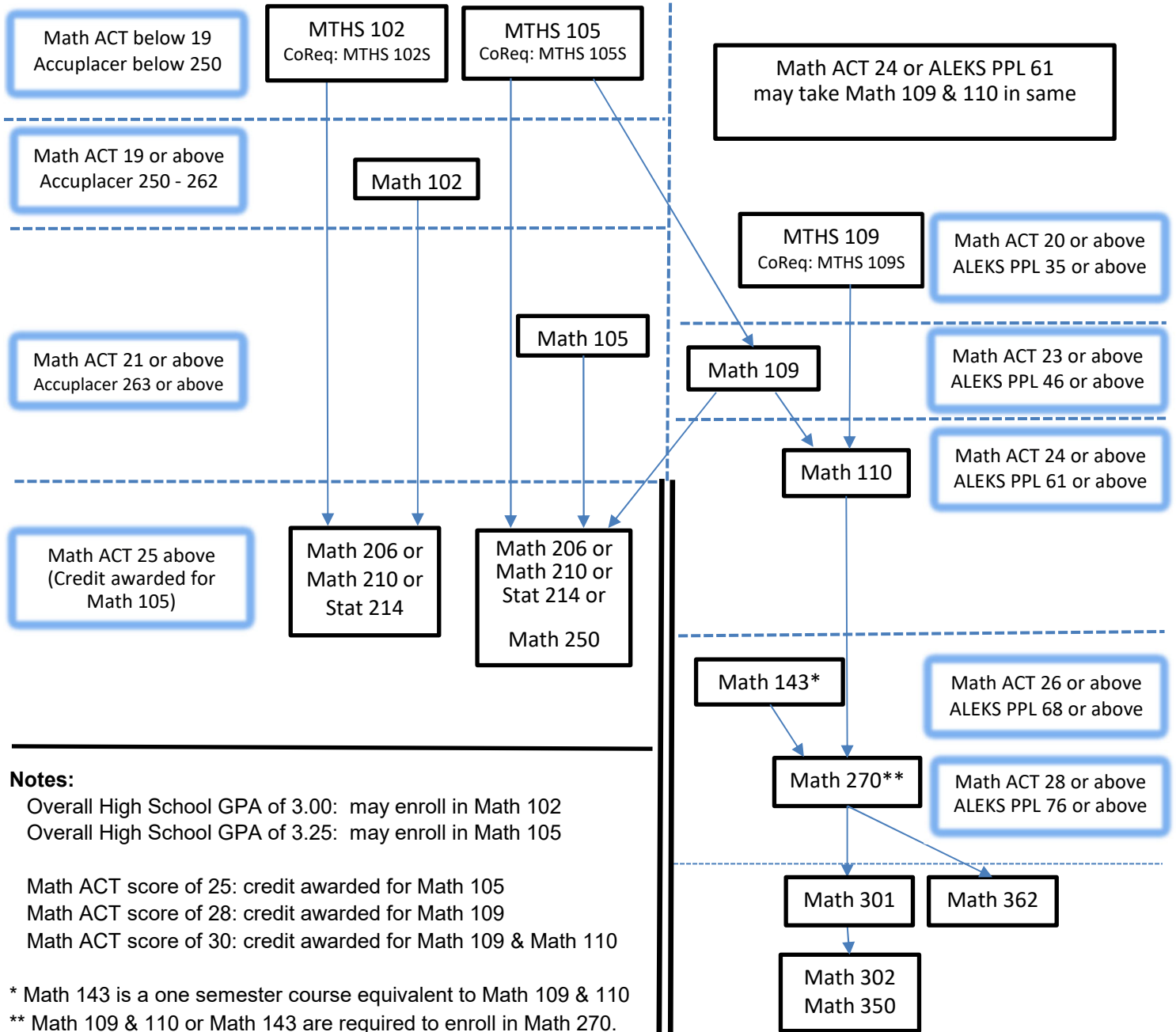
# Flow Chart for Most Common University of Louisiana Mathematics Courses

## How to use this chart:

- 1) Find the first mathematics course required in your major curriculum.
- 2) Identify your mathematics ACT score along the left side of the page. You may enroll in a math course listed at or above your math ACT score. Take notice of where credit is awarded.
- 3) Identify any college mathematics courses for which you have credit, including dual enrollment.
- 4) If you have questions, please contact the Math Department.

Recommended for most non-STEM majors

Recommended for most STEM majors



## Courses

**MTHS 102** Quant. Reasoning w/ Corequisite  
**MTHS 105** Applied College Alg w/ Corequisite  
**MTHS 109** Pre-Calculus Algebra w/ Corequisite

**Math 109** Pre-Calculus Algebra  
**Math 110** Pre-Calculus Trigonometry  
**Math 143** Pre-Calculus Algebra & Trigonometry  
**Math 206** Mathematics of Finance  
**Math 210** Practical Mathematics  
**Math 250** Survey of Calculus

**Math 270** Calculus I  
**Math 301** Calculus II  
**Math 302** Calculus III  
**Math 350** Differential Equations  
**Math 362** Elementary Linear Algebra

**Math 102** Quantitative  
**Math 105** Applied College Algebra

# Updated Math and English Placement

2/6/2024

*Subject to change*

<b>Non-Science Pathway</b>					
<i>ACT</i>	<i>Accuplacer</i>	<i>SAT</i>	<i>ALEKS</i>	<i>Final HS GPA</i>	<i>Math Course(s) Placement</i>
MTHS (Mathematical Sciences)					
≤ 18 <b>or</b>	< 250 <b>or</b>	< 510 <b>or</b>	0 - 34		MTHS 102 & MTHS 102S
≥ 19 <b>or</b>	≥ 250 <b>or</b>	≥ 510 <b>or</b>	≥ 35 <b>or</b>	≥ 3.00	MATH 102
≤ 20 <b>or</b>	< 263 <b>or</b>	≤ 520 <b>or</b>	0 - 34		MTHS 105 & MTHS 105S
≥ 21 <b>or</b>	≥ 263 <b>or</b>	≥ 530 <b>or</b>	≥ 35 <b>or</b>	≥ 3.25	MATH 105

<b>STEM Pathway</b>			
<i>ACT</i>	<i>SAT</i>	<i>ALEKS</i>	<i>Math Course(s) Placement</i>
MTHS (Mathematical Sciences)			
20 - 22 <b>or</b>	520 - 540 <b>or</b>	35 - 45	MTHS 109 & MTHS 109S
≥ 23 <b>or</b>	≥ 560 <b>or</b>	≥ 46	MATH 109
≥ 24 <b>or</b>	≥ 580 <b>or</b>	≥ 61	MATH 110 <b>or</b> MATH 109 & MATH 110
≥ 26 <b>or</b>	≥ 610 <b>or</b>	≥ 68	MATH 143
≥ 28 <b>or</b>	≥ 660 <b>or</b>	≥ 76	MATH 270

Credit for MATH 105: ACT ≥ 25 or SAT ≥ 590

Credit for MATH 109: ACT ≥ 28 or SAT ≥ 660

Credit for MATH 109 & 110: ACT ≥ 30 or SAT ≥ 700

**Any questions concerning the Math Placement, contact [math@louisiana.edu](mailto:math@louisiana.edu)**

<i>ACT</i>	<i>Accuplacer</i>	<i>SAT</i>	<i>Final HS GPA</i>	<i>TOEFL iBT</i>	<i>IELTS</i>	<i>Duolingo</i>	<i>English Course Placement</i>
≤ 17 <b>or</b>	≤ 245 <b>or</b>	≤ 480					ENGL 103 and ENGL 104
≥ 18 <b>or</b>	≥ 250 <b>or</b>	≥ 500	≥ 3.00				ENGL 101
≥ 28		≥ 640					ENGL 115 or 102
18	250	500		79	6.5	100	ESOL 101

Credit for ENGL 101: ACT ≥ 28 or SAT ≥ 640

## First Year Experience (3 Credits)

UNIV 100

First Year Seminar

## English Composition (6 Credits)

Credit awarded for ENGL 101 and placement in ENGL 102 or ENGL 115 for ACT 28 in ENGL.

Only one of ENGL 101 or ENGL 103 may be used for degree credit.

ENGL 101 or ENGL 103 and ENGL 104 Introduction to Academic Writing

ENGL 102 or ENGL 115 or ESOL 102 Writing and Research About Culture

## Mathematics (6 Credits)

Only one of MATH 102, MTHS 102, MATH 105, MTHS 105, MATH 109, MTHS 109 or MATH 143 may be used for degree credit.

Only courses listed below may satisfy the Mathematics General Education requirement

MATH 102	Quantitative Reasoning
MTHS 102 and 102S	Contemporary Mathematics and Practicum
MATH 105	Applied College Algebra
MTHS 105 and 105S	Applied College Algebra and Practicum
MATH 109	Pre-Calculus Algebra
MTHS 109 and 109S	Pre-Calculus Algebra and Practicum
MATH 110	Pre-Calculus Trigonometry and Function Theory
MATH 143	Pre-Calculus Algebra and Trigonometry
MATH 206	Mathematics of Finance
MATH 210	Practical Mathematics
MATH 250	Survey of Calculus
MATH 270	Calculus I
MATH 301	Calculus II
STAT 214	Elementary Statistics
INFX 100	Essentials and Applications of Artificial Intelligence and Machine Learning

## Literature (3 Credits)

Recommended courses are:

ENGL 201	British Literature from the Medieval Period to 1800
ENGL 202	British Literature from 1800 to the Present
ENGL 203	World Literatures to 1600s
ENGL 204	World Literatures from 1600s to Present
ENGL 205	American Literature to 1865
ENGL 206	American Literature since 1865
ENGL 210	Literary Genres
ENGL 211	Thematic Approaches to Literature
ENGL 212	Literature and Other Media
ENGL 312	Shakespeare
ENGL 319	Modern and Contemporary Poetry
ENGL 320	Modern and Contemporary Fiction
ENGL 332	Introduction to Folklore
ENGL 333	Louisiana Literature
ENGL 334	Folklore and Culture
ENGL 341	Drama to 1850
ENGL 342	Drama 1850 to Present
ENGL 350	Young Adult Literature and Media
ENGL 370	Special Topics
ENGL 371	Ethnic Literatures
ENGL 373	Queer Literature, Media, and Culture
ENGL 380	Literature by Women
ENGL 381	The Scripture as Literature
FREN 302	Literary, Linguistic or Cultural Studies I
FREN 311	Introduction to French and Francophone Literature
FREN 322	French and Francophone Popular Culture
FREN 392	Louisiana French Folklore and Folk Music
GERM 311	Introduction to Literature
HUMN 151	The Humanistic Tradition I
HUMN 152	The Humanistic Tradition II
HUMN 200	Ideas and Issues
SPAN 302	Literary, Linguistic or Cultural Studies
SPAN 320	Introduction to Hispanic Cultures
SPAN 340	Introduction to Hispanic Literature

## Natural Sciences (9 Credits)

Six hours must be in a single biological (BIOL) or physical (CHEM, PHYS, GEOL, ENVS) science and three hours in the other natural science area not chosen. Science requirements MAY NOT be satisfied by three courses in the same department.

Only courses below may satisfy the Natural Science General Education requirement:

### Life Sciences

BIOL 110	Fundamentals of Biology I
BIOL 111	Fundamentals of Biology II
BIOL 121	Biological Principles and Issues I
BIOL 122	Biological Principles and Issues II
BIOL 206	Biology for Elementary Education Majors
BIOL 216	Applied Anatomy and Physiology for Kinesiology
BIOL 220	Human Anatomy and Physiology
BIOL 261	General Microbiology
BIOL 300	Conservation of Natural Resources
BIOL 301	Genetic Choices in Modern Society
BIOL 303	Sociobiology
BIOL 304	Plants and Human Affairs
BIOL 305	Survey of Marine Biology
BIOL 312	Introduction to Coastal Ecology
BIOL 313	Animal Science
BIOL 316	Animal Nutrition
ENVS 150	Plant Science

Students who choose to take ENVS 150 as their Life Science course must select their remaining six (6) credit hours from a single subject area in Physical Sciences excluding ENVS.

### Physical Sciences

CHEM 101	Survey of Chemistry I
CHEM 102	Survey of Chemistry II
CHEM 107	General Chemistry I
CHEM 108	General Chemistry II
CHEM 123	Survey of General, Organic, and Biological Chemistry
CHEM 221	Analytical Chemistry
CHEM 232	Organic Chemistry II
CHEM 251	Descriptive Inorganic Chemistry
CHEM 301	Physical Chemistry I
CHEM 317	Biochemistry I
ENVS 100	Environmental Science
ENVS 280	Biosphere Systems
GEOL 105	Our Earth
GEOL 106	Earth Evolution
GEOL 110	Dinosaurs
GEOL 111	Introduction to the Earth
GEOL 112	History of the Earth
GEOL 115	Honors Geology I
GEOL 120	Earth's Changing Climate
GEOL 225	Introduction to Earth Science
PHYS 160	Astronomy of the Solar System
PHYS 170	Astronomy Beyond the Solar System
PHYS 213	Conceptual Physics
PHYS 201	General Physics I
PHYS 202	General Physics II
PHYS 207	Introduction to Physics I
PHYS 208	Introduction to Physics II

Communication (3 Credits)	
Choose from any CMCN or Foreign Language course.	
Recommended Courses:	
CMCN 100	Principles of Human Communication
CMCN 202	Argumentation and Structured Decision-Making
CMCN 212	Writing for Communication
CMCN 302	Competitive Forensics
CMCN 310	Public Speaking
CMCN 345	Social Media Communication
ENGL 223	Introduction to Creative Writing
ENGL 355	Advanced Writing for Teachers
ENGL 356	Advanced Writing in the Arts
ENGL 357	Advanced Writing in Business
ENGL 358	Advanced Writing in Humanities
ENGL 359	Advanced Writing in Social Sciences
ENGL 360	Advanced Writing
ENGL 365	Technical Writing
THEA 261	Acting I
FREN 101	Elementary French I
FREN 102	Elementary French II
FREN 201	Intermediate French I
FREN 202	Intermediate French II
FREN 216	Intermediate Conversation
FREN 301	Louisiana Francophone Language and Culture
FREN 316	Conversation
FREN 332	Professional French and Media
FREN 361	Advanced French I
FREN 362	Advanced French II
SPAN 101	Elementary Spanish I
SPAN 102	Elementary Spanish II
SPAN 201	Intermediate Spanish
SPAN 202	Spanish Readings
SPAN 216	Intermediate Conversation
SPAN 301	Spanish for Heritage Speakers
SPAN 310	Composition
SPAN 316	Conversation
SPAN 330	Introduction to Hispanic Linguistics
SPAN 332	Spanish for Professionals
GERM 101	Elementary German I
GERM 102	Elementary German II
GERM 201	Intermediate German
GERM 202	German for Reading
GERM 216	Intermediate Conversation
GERM 360	Advanced Composition and Conversation
ARAB 101	Elementary Arabic I
ARAB 102	Elementary Arabic II
ASL 101	American Sign Language
ASL 102	American Sign Language II
ASL 201	American Sign Language III

History (3 Credits)	
Recommended courses are:	
HIST 100	Introduction to History
HIST 101	World Civilizations I
HIST 102	World Civilizations II
HIST 221	The United States to 1877
HIST 222	The United States Since 1877
HIST 307	History of Louisiana
HIST 321	English History I
HIST 322	English History II
HIST 330	Modern Africa
HIST 343	Modern Asia
HIST 351	Colonial Latin America
HIST 352	Modern Latin America
HIST 355	Black History
PHIL 101	What is Philosophy?
PHIL 321	Plato, Aristotle, and the Ancients
PHIL 322	History of Modern Philosophy

Fine Arts	
Choose from the following:	
DANC 100	Dance Appreciation
DANC 101	Introduction to Dance I
DANC 102	Introduction to Dance II
DANC 113	Beginning Jazz Technique
DANC 114	Beginning Hip Hop
DSGN 121	Survey of Design
DSGN 361	Louisiana Architecture
INDS 322	History of Interior Design
INDS 389	Principles of Interior Design
MUS 100	Fundamentals of Music
MUS 104	Music Appreciation: History of American Popular Music
MUS 105	Music Appreciation: Survey of Styles
MUS 108	Music Appreciation: Intro to Jazz
MUS 109	Music Appreciation: Broadway and the Lyric Theatre
MUS 130	Diatonic and Chromatic Harmony in Western Music
MUS 321	Class Voice I
MUS 322	Class Voice II
MUS 323	Class Piano for Non-majors
MUS 324	Class Piano for Non-majors
MUS 325	Class Guitar I
MUS 326	Class Guitar II
MUS 327	Class Fiddle I
MUS 328	Class Fiddle II
MUS 329	Class Button Accordion I
MUS 331	Cajun and Creole French Vocals I
MUS 360	Cajun and Zydeco Music
MUS 364	Music Appreciation: Music of the World
THEA 161	Introduction to Theatre
THEA 261	Acting I
VIAR 120	Appreciation of the Visual Arts
VIAR 121	Survey of the Visual Arts I
VIAR 122	Survey of the Arts II
VIAR 303	Introduction to Printmaking

Social Behavioral Sciences (6 Credits)	
Choose from any ANTH, CJUS, ECON, GEOG, POLS, PSYC, SOCI, or other social behavioral science course. Three credit hours must be at the 200+ level.	
Recommended courses are:	
ANTH 100	Introduction to Anthropology
ANTH 201	Cultural Anthropology
ANTH 202	Biological Anthropology
ANTH 203	World Archaeology
CJUS 101	Introduction to Criminal Justice
CJUS 203	The Police Process
CJUS 205	The Corrections Process
ECON 201	Principles of Macroeconomics
ECON 202	Principles of Microeconomics
ECON 300	Fundamentals of Economics
GEOG 103	World Geography
GEOG 104	Physical Geography
GEOG 380	Principles of Geographic Information Systems
POLS 110	U.S. Government
POLS 220	World Politics
POLS 360	International Relations
POLS 370	Political Philosophy: Thinkers
PSYC 110	Introduction to Psychology
PSYC 220	Educational Psychology
PSYC 245	Child Psychology
PSYC 250	Adolescent Psychology
PSYC 255	Life-span Development Psychology (for Non-Majors)
PSYC 370	Behavior Modification
SOCI 100	General Sociology
SOCI 241	Contemporary Social Problems

**\*\*Advisors should refer to the Academic Catalog to determine General Education courses based on each student's degree requirements.**

# AP

Exam Name	Score 3	Score 4	Score 5
Art History	VIAR 121	VIAR 121, 122	VIAR 121, 122
Biology	BIOL 110, 111, 112, 113	BIOL 110, 111, 112, 113	BIOL 110, 111, 112, 113
Calculus AB	MATH 109, 110, 250	MATH 109, 110, 270	MATH 109, 110, 270
Calculus BC	MATH 109, 110, 270	MATH 109, 110, 270, 301	MATH 109, 110, 270, 301
Chemistry	CHEM 107, 108	CHEM 107, 108	CHEM 107, 108
Computer Science A	CMPS 150	CMPS 150	CMPS 150
Computer Science Principles	INFX 205	INFX 205	INFX 205
English Language & Comp	ENGL 101	ENGL 101, 102	ENGL 101, 102, 352
English Literature & Comp	ENGL 101	ENGL 101, 102	ENGL 101, 102, 210
Environmental Science	ENVS 100	ENVS 100	ENVS 100
European History	HIST 101	HIST 101, 102	HIST 101, 102
French Lang & Culture	FREN 101, 102, 201	FREN 101, 102, 201, 202	FREN 101, 102, 201, 202, 361
German Lang & Culture	GERM 101, 102, 201, 211	GERM 101, 102, 201, 211	GERM 101, 102, 201, 211
Human Geography	GEOG 201	GEOG 201	GEOG 201
Latin	LATN 101, 102, 201	LATN 101, 102, 201	LATN 101, 102, 201
Macroeconomics	ECON 201	ECON 201	ECON 201
Microeconomics	ECON 202	ECON 202	ECON 202
Music Theory	MUS 120, 130	MUS 120, 130	MUS 120, 130
Physics I	PHYS 207	PHYS 207	PHYS 207
Physics II	PHYS 208	PHYS 208	PHYS 208
Physics C: Electricity & Magnetism	PHYS 202	PHYS 202	PHYS 202
Physics C: Mechanics	PHYS 201	PHYS 201	PHYS 201
Psychology	PSYC 110	PSYC 110	PSYC 110
Spanish Lang & Culture	SPAN 101, 102, 201	SPAN 101, 102, 201	SPAN 101, 102, 201
Statistics	STAT 214	STAT 214	STAT 214
US Govt & Politics	POLS 110	POLS 110	POLS 110
United States History	HIST 221	HIST 221, 222	HIST 221, 222
World History: Modern	HIST 101	HIST 101, 102	HIST 101, 102

# CLEP

SUBJECT	SCORE	COURSE(S)	CREDIT HOURS
<b>Composition and Literature</b>			
American Literature	55	ENGL 216	3
College Composition	55	ENGL 101 ( <b>with acceptable essay</b> )	3
College Composition Modular	55	ENGL 101 ( <b>with acceptable essay</b> )	3
English Literature	55	ENGL 215	3
<b>History and Social Sciences</b>			
History of the United States I: Early Colonization to 1877	50	HIST 221	3
History of the United States II: 1865 to the Present	50	HIST 222	3
Introductory Psychology	50	PSYC 110	3
Introductory Sociology	50	SOCI 100	3
<b>Science &amp; Mathematics</b>			
General Biology	50	BIOL 121 and BIOL 122	6
Calculus	60	MATH 270	4
Chemistry	50	CHEM 107	3
College Algebra	50	MATH 105	3
College Mathematics	50	MATH 102	3
Precalculus	50	MATH 143	3
<b>World Languages</b>			
College French - Level 1	50	FREN 101, FREN 102	6
College French - Level 2	60	FREN 101, FREN 102, FREN 201	9
College German - Level 1	50	GERM 101, GERM 102	6
College German - Level 2	60	GERM 101, GERM 102, GERM 201	9
College Spanish - Level 1	60	SPAN 101, SPAN 102	6
College Spanish - Level 2	60	SPAN 101, SPAN 102, SPAN 201	9
			4/8/2026

# Helpful Advising Links & QR Codes

## Change Major



For students to change their majors BEFORE registration

## Transcript Request



Transcript request links by institution (Louisiana)

## College Board Scores



College Board score request for CLEP and AP exams

## ACT Score Request



To request and view official ACT Scores

## Academic Calendar



Academic Calendar by semester- A living document

## Academic Catalog



Access the academic catalog

## Schedule of Classes



See what courses are available now

## Digital Advising Form

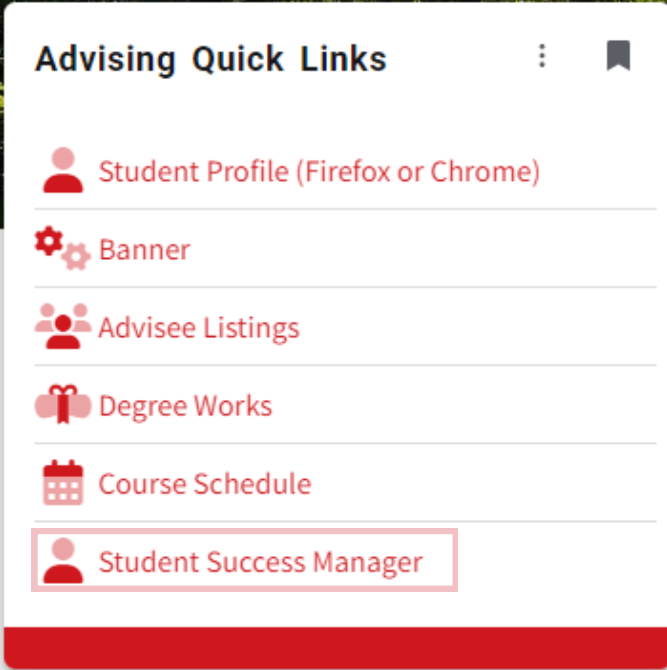


A fillable pdf for advising digitally



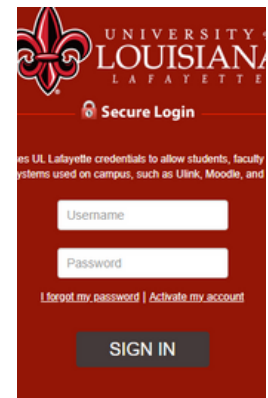
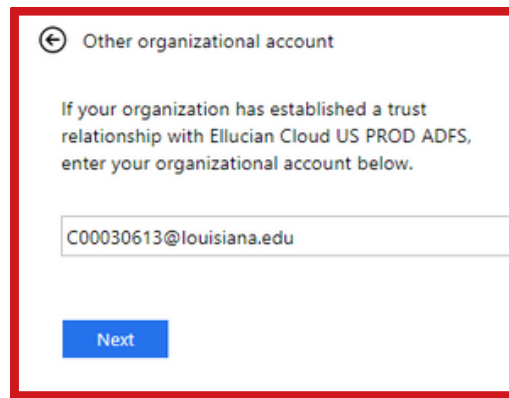
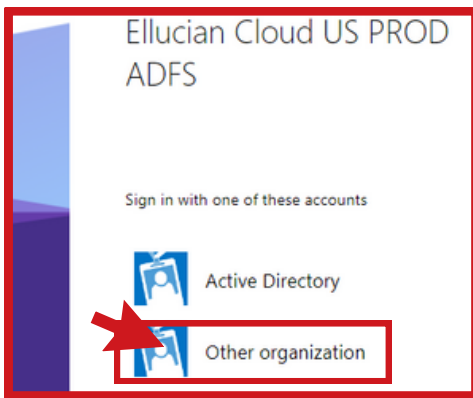
# Student Success Manager Quick Tips

Student Success Manager, SSM, is a university-wide tool that allows the student's success team (advisors, faculty members, and some campus resources) to track a student's progress through its alert and notation system. Read on for tips on its usage!



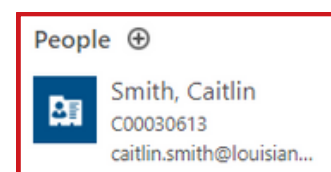
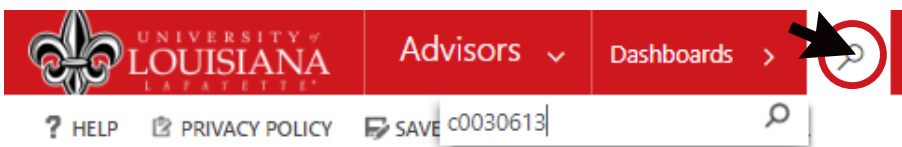
## Accessing SSM

A link to the advisor side of SSM can be found on the Advising Quick Links tab, as shown above. All login information is the same as your university information.



## Finding Your Advisee

Student information can be found on your Advisor Dashboard as well as through a search using the students name (last, first) or their ULID.





# The Student Profile

Information that can be found on the student profile:

- Meeting notes from advisors, campus partners, and faculty members
- Alerts submitted by faculty
- Previous advising documents
- Major, academic standing, and Student Success Team

PERSON : STUDENT

ERP ID: [Redacted] Preferred Name: [Redacted] E-mail: [Redacted] Phone: [Redacted]

Summary

Term	Name	Section
Fall 2024	ENGR...	ENGR 220
Fall 2024	ENGT...	ENGT 270
Fall 2024	ENGT...	ENGT 307
Fall 2024	ENGT...	ENGT 307
Fall 2024	ENGT...	ENGT 320
Fall 2024	ENGT...	ENGT 320

1 - 6 of 8 Page 1

POSTS ASSISTANT ACTIVITIES NOTES

Enter a note

**Drop**  
[Redacted] also asked to withdraw from MATH 301. He has TOPS and will go  
Hayes, Taylor - 9/11/2023 10:48 AM

**CMJ**  
[Redacted] was an ASC walk-in and asked to CMJ from MCHC to Engineering  
Hayes, Taylor - 9/11/2023 10:47 AM

## Adding a Document or Note

Use SSM to keep track of your advising meetings and documents by taking notes and uploading their advising forms after your meeting in the Notes section of SSM.

POSTS ASSISTANT ACTIVITIES NOTES

**Title**  
Enter a note

Attach Done

## Additional Information & Instruction



For more instructions on how to access and use SSM



For more detailed instructions on how to enter a note

Please reach out to the SSM Analyst with further questions.

Melissa Chavis  
337-482-5688  
melissa.chavis@louisiana.edu

## Quick Reference University Contact List

For Information About	Contact	Number
<b>Admissions</b> (Receipt of Transcripts) admissions@	Tasha Evans Admissions	482-6473 601 W. St. Mary 5 <sup>th</sup> floor
<b>Advising Questions</b> success@	Francine Prudhomme Academic Success Center	482-5432 Lee 115 482-6818, Lee 115
<b>Student-Athlete Academic Advising</b>	Austin Knight Student-Athlete Academic Center	482-1044 Dupre Library, room 351
<b>Career Counseling</b> explore@	Lauren Landry Major & Career Exploration	482-1444 Agnes Edwards 104
<b>Counseling</b> counseling@	Kristy Fusilier Counseling and Testing	482-6480 Saucier Wellness Center
<b>Disability Services</b> ods@	Carol Landry Office of Disability Services	482-5252 Agnes Edwards, room 126
<b>Emergency Services</b>	University Police	482-6447 Bittle Hall
<b>Financial Assistance</b> finaid@ scholars@	Cindy Perez, Financial Aid  Adele Bulliard, Scholarships	482-6497 601 W. St. Mary 5 <sup>th</sup> floor 482-6515, Martin 260
<b>Freshman Mathematics</b> math@	Joshua Fontenot Math Department	482-5290 Maxim Doucet 213
<b>First-Year Writing</b> sarah.lonelodge@	Sarah Lonelodge Department of English	482-5501 Griffin 214
<b>Honors Courses and Program</b> honors@	Emily Sandoz, Elizabeth Daspit Honors Program	482-6700 Judice 206
<b>Housing</b> oncampusliving@	Dawn Miller Student Housing	482-6471 Buchanan Hall, 2 <sup>nd</sup> floor
<b>Job Search &amp; Preparation</b> careerservices@	Kim Billeaudeau Career Services	482-1444 Agnes Edwards 104
<b>Office of First-Year Experience</b> firstyear@	Christine Williams UNIV 100	482-2851 Lee 106
<b>Orientation</b> orientation@	Lauren Sarver	482-1391 Buchannan 311
<b>Transferring to UL Lafayette</b> transfer@	Caitlin Smith Academic Success Center	482-1262 Lee 115
<b>Transfer Credit Posting</b> transfercredit@	Elizabeth Daigle Registrar's Office	482-1024 Martin Hall, room 171
<b>Tutoring and Academic Support</b> tlc@	James Boffenmeyer The Learning Center	482-6509 Lee 204A
<b>The Writing Lab</b> writinglab@	Nichole Stanford	482-5224 Dupre Library, 155A
<b>Vice President for Student Success</b> andy.benoit@	Andy Benoit	482-5912 Martin Hall, 248

## Honors Interdisciplinary Discovery Minor

### First appears Fall 2026 catalog

- Formalizes and documents requirements to graduate from Honors Program
  - 6 credits Honors Seminar HONR 300 (any section)
  - 18 credits Honors Courses (Honors equivalents, Honors cross-listed/combined, HONR courses, Honors contracts)
  - 3.5 GPA
  - Participation in Senior Poster Symposium
- Available to Honors Students in all Colleges
  - All First Time Freshmen joining Honors (requires 3.5 GPA and 23 ACT) will add HID Minor
  - Any new Transfer students have the option the HID minor (requires 3.5 GPA)
  - Any Current student in Honors or meeting criteria for Honors (3.5 GPA) can add the Minor (will necessitate updating catalog)
- Adding the minor
  - New students at orientation
    - (1) Apply to Honors Program, (2) Honors processes application and adds attribute (with Registrar help), (3) Honors sends list of new attributes to ASC, (4) ASC sends form for student signature to add minor
  - Current students not in Honors
    - (1) Apply to Honors Program, (2) Honors processes application and adds attribute, (3) Honors refers student to ASC (under 60) or Dean's office (60+ hours) to initiate and sign form to add HID minor
  - Current students in Honors
    - Honors refers student to ASC (under 60) or Dean's office (60+ hours) to initiate and sign form to add HID minor
- Non-minor Honors options
  - New students joining Honors with 60+ hours: Core Track
    - 4 credits Honors Seminar HONR 300 (any section)
    - 12 credits Honors Courses (Honors equivalents, Honors cross-listed/combined, HONR courses, Honors contracts)
    - 3.5 GPA
    - Participation in Senior Poster Symposium
  - Current (pre-Fall 2026) Honors students
    - Standard 18 credits courses, 6 credits seminar, senior poster
    - Transfer (60+) 12 credits courses, 2 credits seminar, senior poster
    - GPA 3.5 (3.2 for pre-Fall 2025)