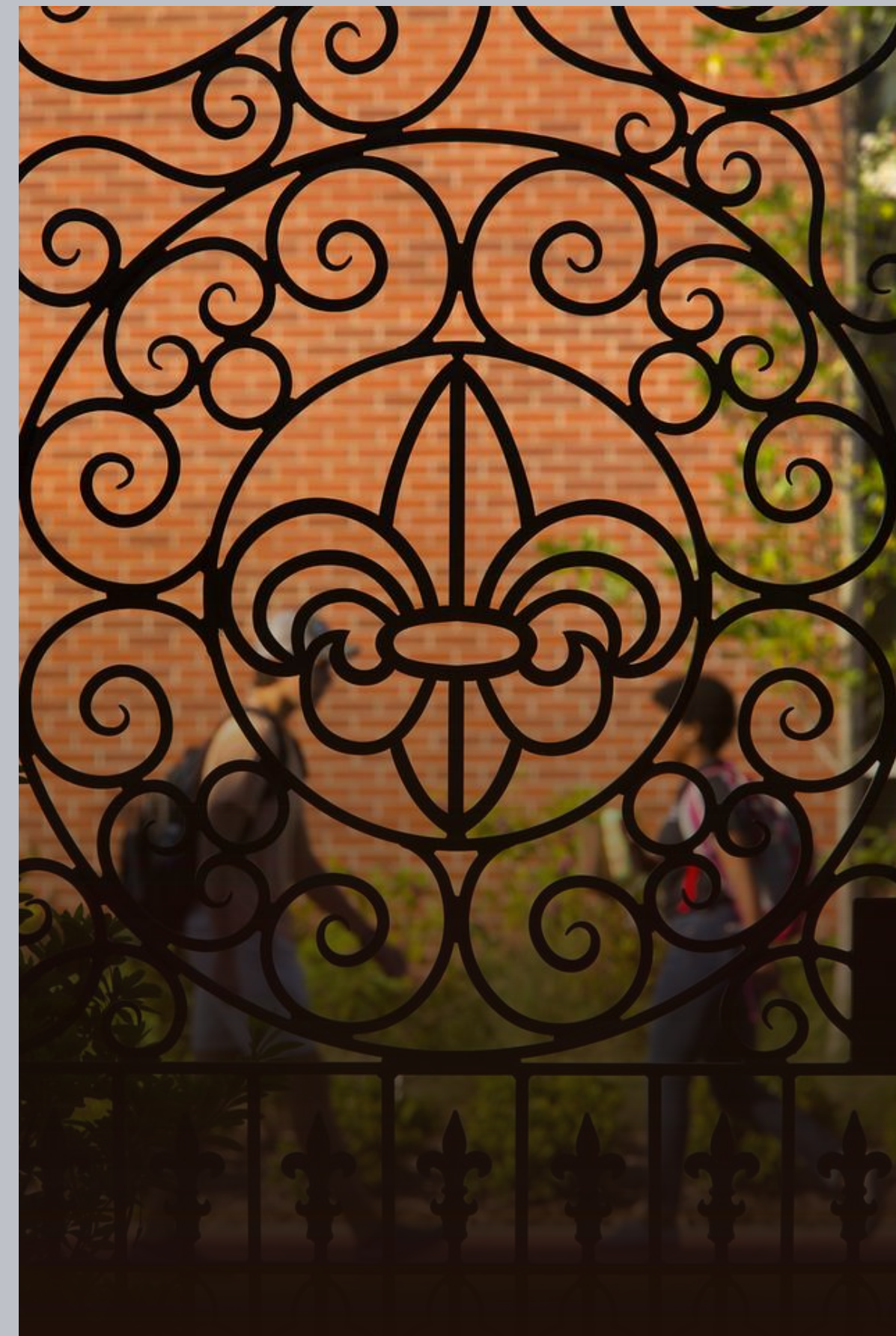


Academic Scholarships



UNIVERSITY *of*
LOUISIANA
L A F A Y E T T E[®]



Meet the Scholarships Team



Adele Bulliard
Director



Kelly Hasling
Assistant Director



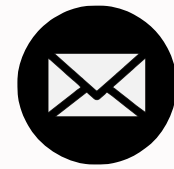
Carla Hoffpauir
Scholarships Counselor

Contact Us

UL LAFAYETTE OFFICE OF SCHOLARSHIPS



337-482-6515



scholars@louisiana.edu



louisiana.edu/scholarship



Martin Hall, room 260



Types of *Scholarships*

University Funded

Outside Source/Private
Scholarships

UL Lafayette Foundation
Scholarships



FRESHMEN SCHOLARSHIPS

UL Lafayette Scholarships are in addition to the Louisiana TOPS program.

These scholarships are automatically awarded upon formal admission to the University.

Requirements:

- 3.0 cumulative, non-weighted GPA
- 23 ACT composite or superscore, or 1130 SAT composite
- U.S. citizenship
- Must be regularly admitted to the University



Students must meet all requirements by May 31st of their graduating year.

FRESHMEN SCHOLARSHIPS

LIVE OAK

ACT 32+ | SAT 1420+
3.0+ cumulative GPA

\$1,500 /semester

+

\$5,749 /semester

Housing and meal plan in
a shared suite-style unit

+

CAMPUS SCHOLARSHIP JOB

Optional job enables you to
earn up to \$1,200/semester

Total | **\$67,592*+**

MAGNOLIA

ACT 28-31 | SAT 1300-1410
3.0+ cumulative GPA

\$1,400 /semester

+

\$2,653 /semester

Portion of housing in a
shared suite-style unit
(4 semesters)

Total | **\$21,812***

CYPRESS

ACT 23-27 | SAT 1130-1290
3.0+ cumulative GPA

\$1,300 /semester

Total | **\$10,400***

Scholarships are awarded for eight semesters except where indicated. If you are awarded a scholarship, you must maintain minimum GPA and credit hour requirements per your scholarship offer.

FRESHMEN SCHOLARSHIPS

Supplemental Scholarships

Supplemental Scholarships	Eligibility Requirements	Award
Out-of-State Fee Waiver	ACT 20+ SAT 1030+ 2.5+ cumulative GPA	\$68,640* \$6,864 /semester for 10 semesters
Dr. Ray P. Authement Valedictorian Scholarship	High School Valedictorian	\$1,000 for freshman year Contact Scholarship Office for details
Jefferson Caffery Scholarship	National Merit Finalist or Semifinalist	\$4,000* \$500/semester for 8 semesters + \$4,000* for UL Lafayette Study Abroad

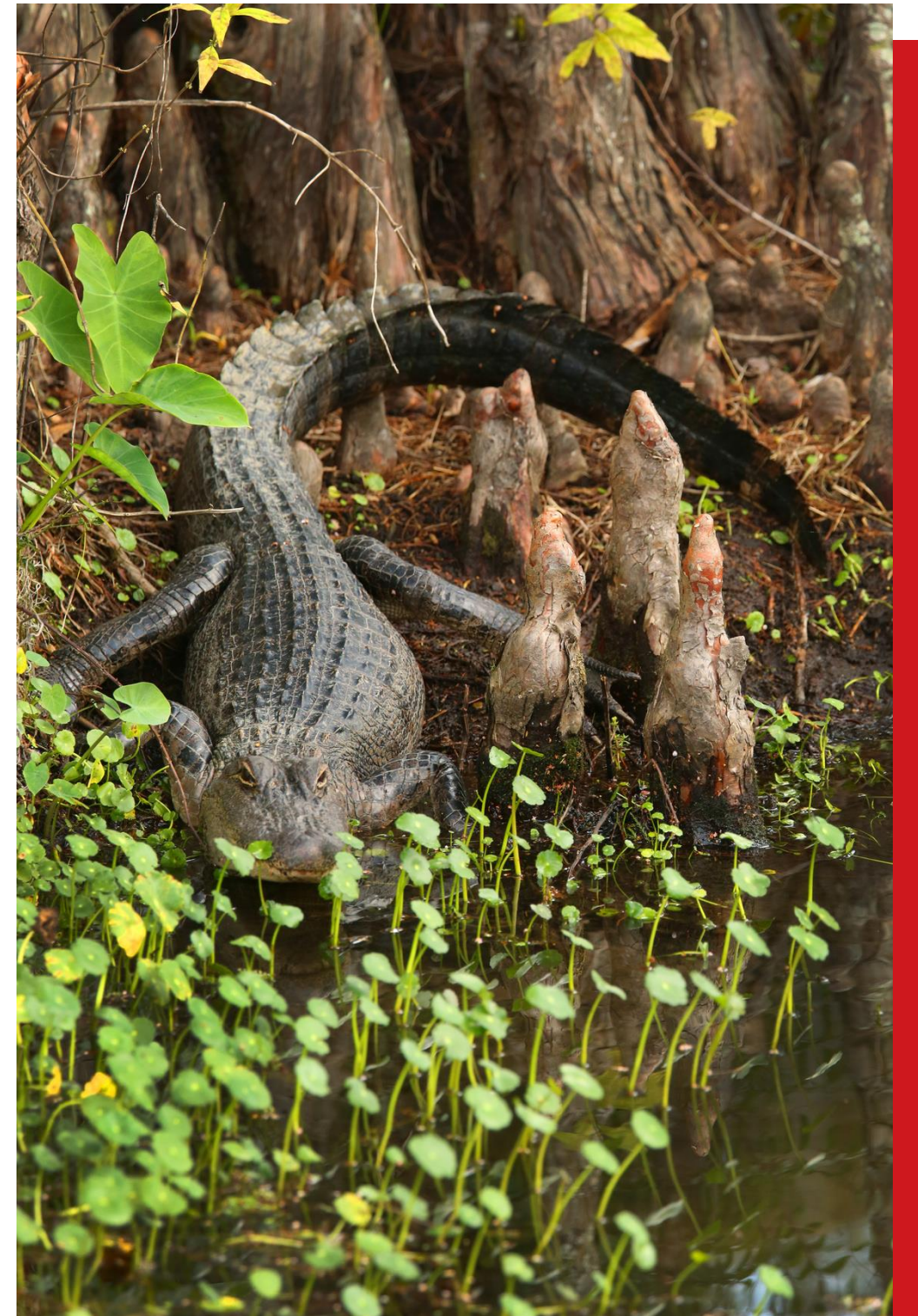
* Estimated value | Revised June 2024

FRESHMEN SCHOLARSHIPS

Additional Opportunities

- **UL Lafayette Literary Rally Scholarship**
 - One-time \$100 award
 - Awarded to students who have placed 1st at UL Lafayette Literary Rally
- **Beryl Shipley Mended Hearts Scholarship**
 - Awarded to students who have had open heart surgery heart surgery, or cardiovascular surgery
- **UL Lafayette Eagle Scout Scholarship**
 - Awarded to an incoming freshman Eagle Scout

Contact our office for forms and processing!



TRANSFER SCHOLARSHIPS

These scholarships are automatically awarded upon formal admission to the University.

To qualify for transfer scholarship consideration, you must be regularly admitted to the University as a transfer student and meet the following general eligibility requirements:

- U.S. citizenship
- 12+ hours of college-level coursework
- Must be eligible to return to your previous institution
- Must not be a transfer re-entry student
- Must not possess a bachelor's degree



TRANSFER SCHOLARSHIPS

ACADEMIC

12+ credit hours
3.2+ cumulative GPA

\$700 /semester
(6 semesters)

ASSOCIATE DEGREE

Associate Degree
3.0+ cumulative GPA

\$950-\$1,200 /semester
(6 semesters)

OR

Total | **\$4,200***

Total | **\$5,700-\$7,200***

*Does not apply to online programs or Compete LA. Must submit final transcript to be eligible.

* Estimated value | Revised June 2024

Re-entry students are not eligible for these scholarships.

TRANSFER SCHOLARSHIPS

Supplemental Scholarships

Supplemental Scholarships	Eligibility Requirements	Award
Out-of-State Transfer	12+ credit hours 2.75 cumulative GPA	\$6,864 /semester for 10 semesters
Phi Theta Kappa	Active Phi Theta Kappa membership Associate Degree 3.0 cumulative GPA	\$500 /semester for 4 semesters Obtain verification form from the Scholarship Office

* Estimated value | Revised June 2024

Important Notes



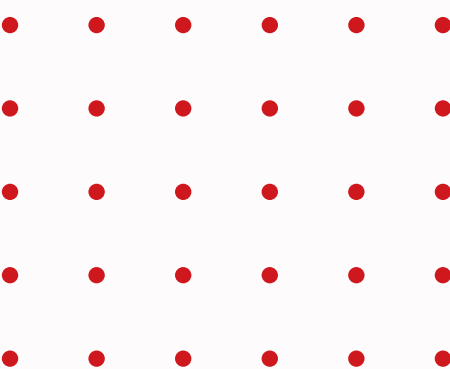
You must be enrolled as a full-time student (12+ hours) to receive scholarship funds.



You must successfully complete 12+ hours and meet the GPA requirements (usually 3.0 cumulative) at the end of each semester.



Your cumulative GPA includes dual enrollment grades when determining continued eligibility.





Important Notes

continued



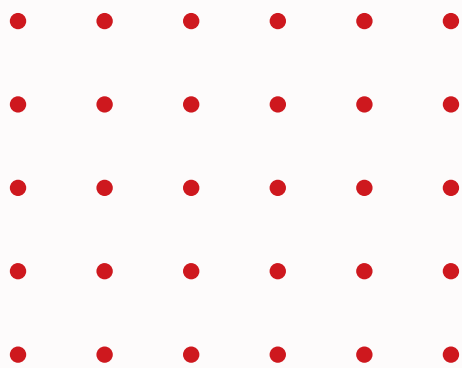
UL Lafayette Academic Scholarships are not applicable to online programs.



Scholarship requirements are completely separate and almost always different from the requirements to keep TOPS and/or Financial Aid.



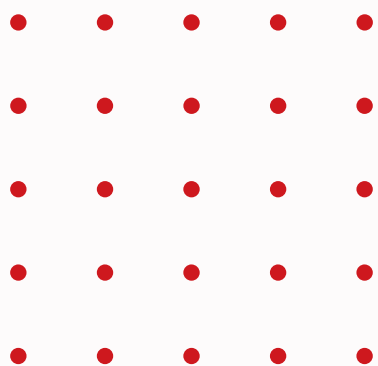
You have only one opportunity to appeal the loss of your academic scholarship



Outside/Private Source Scholarships



- Scholarships awarded by private foundations, local organizations, etc.
- Please provide your donor with our Outside Source Form
- Checks should be made payable to UL Lafayette





ADDITIONAL SCHOLARSHIP OPPORTUNITIES

Foundation Scholarships

- UL Lafayette Foundation Scholarships are gifts from donors
- Awarded by major or academic college, usually at the junior/senior level
- Apply by contacting the scholarship coordinator in your major or college or by visiting their website



Foundation Scholarships

Approximate Award Amounts by College

College of the Arts

90 scholarships | \$250,000

Majority in Music & Performing Arts,
Architecture & Design, and Visual Arts

College of Business Administration

140 scholarships | \$410,000

Available for all majors, especially
Economics, Finance, and Accounting

College of Education & Human Development

80 scholarships | \$275,000

Majority in Education and Kinesiology

College of Engineering

95 scholarships | \$270,000

Majority in Petroleum Engineering
and Chemical Engineering

Foundation Scholarships

Approximate Award Amounts by College

College of Liberal Arts

95 scholarships | \$250,000

Majority in Modern Languages
and English

College of Nursing & Health Sciences

55 scholarships | \$400,000

Majority in Nursing

College of Sciences

80 scholarships | \$180,000

Majority in Biology, Environmental
Science, and Geology

University College

\$90,000 in Awards

Majority in the Honors Program

Honors, SGA, & Alumni Association

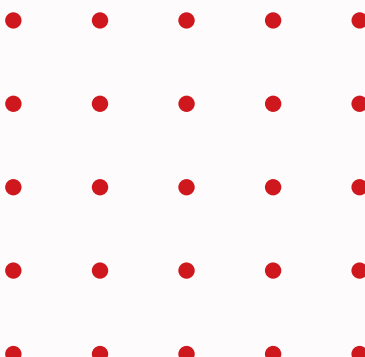
Scholarships

<i>Honors Program</i>	<i>Student Government Association</i>	<i>Alumni Association</i>
<p>20 scholarships \$90,000</p> <ul style="list-style-type: none">• Membership required• Apply online at honors.louisiana.edu• For more information, contact: honors@louisiana.edu	<p>\$40,000 in Awards</p> <ul style="list-style-type: none">• Membership NOT required• Apply online at louisiana.edu/sga• For more information, contact sga@louisiana.edu	<p>12 scholarships \$20,000</p> <ul style="list-style-type: none">• Qualifications vary• Apply online at alumni.louisiana.edu• For more information, contact alumni@louisiana.edu

Band & Music Scholarships



- Audition with the department for selection
- Scholarships are posted to accounts after Band Camp
- Band scholarships cannot be used:
 - at the Heritage Apartments
 - with other on-campus housing scholarships



Study Abroad Scholarships

- Pursue course credit while taking classes in a foreign country during the summer
- Earn 3-9 credits
- Scholarship Opportunities available through:
 - Scholarship Office for National Merit Finalists/Semifinalists
 - Study Abroad Program



HOW DO I RECEIVE MY *Scholarship?*

- Scholarships are applied directly to the student's account balance.
- Any refund due to excess funds will be processed by the Student Cashier Center (Bursar's Office).
 - We **strongly** encourage you to set up direct deposit for your refunds.
 - Visit **louisiana.edu/studentcashier/student-disbursements/direct-deposit** for more information.
 - If direct deposit is not set up, you'll receive a check in the mail.



WHEN SHOULD I CONTACT *the Scholarship Office?*



- Any time you are considering dropping a class
- If your scholarship has not been posted to ULink under “My financial aid and scholarship awards.”
- If you need to identify the Scholarship Coordinator for your college/departmen
- If you are unsure about the room/meal plan that your scholarship covers
- If you have any questions about the terms of your scholarship

Contact Us

UL LAFAYETTE OFFICE OF SCHOLARSHIPS



337-482-6515



scholars@louisiana.edu



louisiana.edu/scholarship



Martin Hall, room 260

Visit our website for
even more scholarship
opportunities!

