



CONTENTS

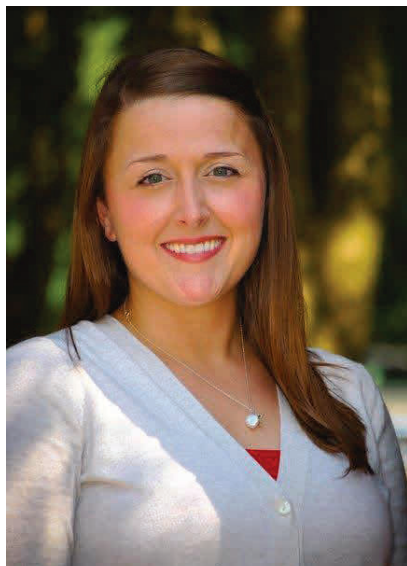


Welcome	02
Academic Engagement	04
2025-2026 Academic Calendar	04
Requirements for a Bachelor's Degree	04
General Education	05
Advising	06
Credits Already Earned - Freshmen Students	07
Credits Already Earned - Transfer Students	08
Academic Expectations & Procedures	09
Academic Resources	09
Academic Terminology	11
Tips for Success	12
Academic Lagniappe	13
Honors Program	14
Academic Colleges	15-28
Campus Involvement	29
Student Organizations	29
University Program Center	30
Campus Traditions	31
Ragin' Cajuns Athletics	32
Campus Services	33
Student Health and Wellness	37
Financial Aid & Scholarships	39
Veteran Services	40
Scholarships	40
Cajun Card Services	41
Campus Dining	42
Transportation Services	43
Technology 101	44
Public Safety	47
Campus Directory	48

All events and dates in this text are subject to change.



Orientation from the Inside



On behalf of the Student Orientation Staff, I welcome you to Orientation!

We are excited that you have chosen to embark on your educational journey at the University of Louisiana at Lafayette, a Carnegie R1 University and an institution of choice for many top scholars. As an alumna of the University, I speak from experience when I say that your college years will be all that you have imagined, but it is up to you to make the most of them. I encourage you to become engaged in the classroom, join a student organization or two, and experience all that the University has to offer.

Your orientation experience is designed to show you the ways the University can help you be successful. A few benefits of attending Orientation include: meeting with directors of many of the support services across campus; hearing from students who will give you honest feedback on how to succeed as a Ragin' Cajun; discovering ways to get connected to campus life; and getting to know the Student Orientation Staff. SOS members have a thorough knowledge of the University and are specially trained to answer your questions and help you throughout your experience. At Orientation and during your time on campus, look to them as mentors and reach out to them for assistance.

Your success at Orientation is directly related to the investment you make. While at Orientation, ask questions, learn our traditions and school history, locate your classes, and make a few friends; they may remain with you throughout your college years and beyond. I challenge you to step out of your comfort zone, learn something new, and make the most of your Orientation experience.

I look forward to meeting with you and watching as you make your mark on the University of Louisiana at Lafayette!

Sincerely,

Lauren L. Sarver
Director of Orientation



Welcome to UL Lafayette

Welcome to the University of Louisiana at Lafayette!

The next few years promise exciting experiences for you as a member of the Ragin' Cajuns family.

Here, you'll broaden your worldview, expand your knowledge, sharpen your learning and thinking skills, engage in leadership opportunities, establish lifelong friendships and, yes, have fun.

You'll discover very quickly – as generations of students have discovered before you – that this University is a special place. Its dedication to academic excellence, enduring traditions, and beautiful campus environment contribute to making UL Lafayette an extraordinary place to live, learn and pursue your dreams.

We're glad you're here. You have much to contribute to the University and to our wider community: new ideas, fresh perspectives, and innovative and compelling questions.

The University continues to attract exceptionally prepared individuals because of the well-earned reputation we have for prioritizing student success.

Our world-class faculty will challenge you – and help you meet and master those challenges. They'll encourage you to engage in service-learning activities and internships. And, many will offer you the chance to work alongside them in practical research experiences.

Take advantage of as many of these opportunities as you can. Each is an investment in your future.

We want you to succeed academically. But the benefits of attending a university extend beyond the classroom. Here, you will build relationships with people from different countries, cultures and backgrounds. Some of the friends you make will remain lifelong friends.

Making meaningful connections is one part of University life. Getting involved is another.

Join a student club or organization. We have more than 200 of them. Attend theatrical performances and concerts.

Cheer the Louisiana Ragin' Cajuns on to victory. Visit the Hilliard Art Museum, where you can see some of the finest art exhibits the world has to offer.

To a great extent, your University experience is yours to define. So, make the most of it. You'll be glad you did.

Good luck and Geaux Cajuns!



Dr. Joseph Savoie
President



ACADEMIC ENGAGEMENT

Helping You Understand Your Degree and Succeed Academically

The University of Louisiana at Lafayette offers more than 100 undergraduate degree programs and specialized concentrations. Faculty and staff on our campus are committed to ensuring you are successful.

2025-2026 ACADEMIC CALENDAR (TENTATIVE)

Summer Session 2025 (TENTATIVE)

First Day of Classes
Monday, June 9, 2025

Last Day of Classes
Wednesday, July 30, 2025

Final Exams
Thursday, July 31 – Friday, August 1, 2025

Fall Semester 2025 (TENTATIVE)

New Student Convocation
Friday, August 22, 2025
(Mandatory for First-time freshmen)

First Day of Classes
Monday, August 25, 2025

Last Day of Classes
Friday, December 5, 2025

Final Exams
Monday, December 8 – Friday, December 12, 2025

Spring Semester 2026 (TENTATIVE)

First Day of Classes
Wednesday, January 14, 2026

Last Day of Classes
Friday, May 1, 2026

Final Exams
Monday, May 4 – Friday, May 8, 2026

Dates are subject to change. Visit louisiana.edu/registrar/registration/academic-calendar for the most up-to-date calendar.

REQUIREMENTS FOR A BACHELOR'S DEGREE

Every student who comes to the University of Louisiana at Lafayette as an undergraduate student seeks to earn a “bachelor’s degree” (from the Latin baccalaureate, roughly translated as junior degree). No matter the kind of degree you are seeking here at UL Lafayette, you must earn a minimum of 120 credit hours (which may include credit hours from courses you have already taken elsewhere, earned as Advanced Placement (AP) credit, other types of test credit, and dual enrollment credit). The 120 credit hours required for your degree may include four components:

1. General Education courses (or “core curriculum”): Every student at UL Lafayette must complete 42 credit hours of General Education coursework. “Gen Ed” courses aim to ensure that every UL Lafayette graduate has basic knowledge and skills that prepare them for both a career and life as an educated member of society. See next page for more information about the Gen Ed curriculum.

2. Major courses: The “major” is the field of study (chosen by the student) in which a student intends to specialize. The major coursework will begin with foundational courses – often in related fields – that are required to understand the specialized work that will come later in the major. Your choice of major should be based on an understanding of your interests, aptitudes and careful thought about your career goals. Ideally, you will find a major that perfectly

captures the intersection of your own talents and future dreams. If you are unsure what major or minor best fits your interests and academic talents, UL Lafayette’s Major & Career Exploration Center can help. See page 13 for more information about the services they offer.

3. Minors: Minors are a minimum of 18 credit hours in a specified group of courses within a particular discipline or field and are meant to complement your major. Some majors require a minor to fulfill degree requirements. Be sure to discuss minor requirements with your advisor.

4. Electives: In some majors, you will be asked to choose additional courses (electives) that interest you and complement your major studies. Keep this in mind as you schedule courses each semester, and be sure to discuss your elective requirements with your advisor. Some majors may require you to choose electives from an approved list.

Be sure to review your degree program (a list of all required courses for the bachelor’s degree) so that you understand what courses are required for your major, including General Education and elective coursework. Degree programs and requirements are listed in the Academic Catalog at catalog.louisiana.edu.



GENERAL EDUCATION

We live in a dynamic global society in which technological advances move swiftly and geopolitical alliances seem to shift constantly. It is increasingly important that our students not only understand what we know today, but acquire the skills necessary to learn what they will need to know tomorrow. This is what the “Gen Ed” curriculum is all about – helping you evolve into lifelong thinkers who can make critical decisions, evaluate and respond to societal challenges, communicate with those like and unlike you, and appreciate the beauty around you. Gen Ed, in short, provides a foundation for success not just in college, but also in life.

Gen Ed is also what distinguishes a university education from that of a technical school. So your choices about which Gen Ed classes to take should be made thoughtfully and strategically – based on interests, career aspirations, passions, and future plans.

Each UL Lafayette student, regardless of major, will take 42 hours (or 14 courses) to complete the Gen Ed requirement, including:

FIRST-YEAR SEMINAR	3 credit hours	UNIV 100
ENGLISH COMPOSITION	6 credit hours	ENGL 101-102 or the equivalent
MATHEMATICS	6 credit hours	Course requirements vary widely by major and ACT/SAT score; for some degree programs, 3 credit hours may be statistics (STAT)
FINE ARTS	3 credit hours	Approved courses from dance, design, music, theater, and visual arts
BEHAVIORAL SCIENCE	6 credit hours	Anthropology, criminal justice, economics, geography, political science, psychology, sociology, with 3 credit hours at the 200-level or higher
HUMANITIES	9 credit hours	3 credit hours from approved literature (English, foreign language, or humanities-centered literature); 3 credit hours from recommended history or philosophy; and 3 credit hours from recommended communication or foreign language courses
NATURAL SCIENCES.....	9 credit hours	All students must take both life (biology) and physical (chemistry, physics, geology, environmental science) sciences. 6 credit hours in one science area and 3 credit hours in the other science area
TOTAL	42 credit hours	

At UL Lafayette, we hope you will take away specific learning experiences from your Gen Ed courses, no matter which classes you choose to satisfy these requirements.

As you plan your educational journey here at UL Lafayette, remember that the Gen Ed courses are designed and intended to help you master information in your major more effectively. As such, please take your Gen Ed classes as early as possible in your academic career. That is, please stick to your curriculum and don't be tempted to put these off. The earlier you complete your Gen Ed requirements, the quicker you will transition into your major courses.

For more information on General Education visit:

catalog.louisiana.edu

and click on General Education Curriculum in the Catalog Navigation.



ADVISING

Advising is a crucial component of helping you navigate your time at the University and keeping you on track to graduation. Advisors help you select courses each semester, and offer guidance about your major, career planning, academic progress and more. Each semester, an advising hold will be placed on your account prior to registration, and you must meet with an advisor to have that hold removed so that you can schedule classes. This ensures that you and your advisor will stay in regular contact.

ADVISING AT ORIENTATION

Your first experience with advising at UL Lafayette will be different than in subsequent semesters. During Orientation, you will meet with an advisor from your college or a professional advisor. Advising may be completed individually or in small groups. The person you meet with will not necessarily be your permanent advisor. The primary goal of this session is to help you select the courses you need to register for in your first semester.

After meeting with your advisor, you will proceed to a computer lab on campus where the Student Orientation Staff will help you register for and schedule your classes.

Remember, once you have attended Orientation, you can make changes to your schedule anytime through ULink. The schedule adjustment (drop/add) period ends after the 8th day of classes (fall/spring semesters), so make sure you are satisfied with your schedule before that time.

ADVISING FOR CONTINUING STUDENTS

Advising after Orientation takes place during a designated advising period during each fall (October) and spring (March) semester. You will meet with your advisor in late fall to discuss courses for the spring semester, and in the spring to discuss courses for the summer and fall semesters. You will be assigned an advisor and you will schedule an appointment with them according to their policies. For more information on advising and how to prepare for your advising appointment, you may visit the Academic Success Center's website, louisiana.edu/studentsuccess/advising/students.

Before Advising

Before meeting with your advisor, you will need to learn your advisor's or the department's policies and procedures for scheduling an appointment. Make sure you schedule a meeting early — your advisor's time will get booked quickly.

Take a look at your degree plan in the Academic Catalog (catalog.louisiana.edu) or in Degree Works (available in ULink) to begin reviewing curriculum requirements. Degree Works offers students an easy way to track degree completion. Review General Education



course options for your major and consider enrolling in courses you may enjoy learning more about. It is best to utilize both the catalog and Degree Works to come up with 5-7 courses you wish to enroll in prior to meeting with an advisor.

During Advising

You and your advisor will discuss the courses you are interested in taking, so be sure to put together a list of first choice classes. Also make sure you have some alternatives in place, because classes may fill or not fit into your schedule. Ask your advisor questions about what they are suggesting you take and why — make sure you understand their long-term plan for you, and do not be afraid to advocate for yourself if you have a different idea.

Also, your advising appointment is a good time to talk about any academic difficulties you're having (study skills, certain subjects, time management) or long-term planning questions. If you're curious about career paths in your field, internship opportunities, graduate school, or even just declaring a minor, your advising appointment is the perfect time to discuss that.

Registering for the Following Semester

Unlike at Orientation, you may not be able to register for classes immediately. Each student is assigned a registration time (you can check yours through ULink), which allows for staggered access to the registration system. When your registration time opens, you will be able to access the course registration system through ULink and schedule your classes from anywhere you have internet access. Be sure to clear any holds which may affect your registration.

While you're waiting for your registration appointment, it is a good time to map out your schedule. Use the advising sheet from your advising appointment as a guide when planning class times and creating a semester schedule. You should be ready to register for classes as soon as you are allowed into the system, if all holds affecting registration have been cleared. Courses fill up quickly, so don't wait.



CREDITS ALREADY EARNED - FRESHMEN

Many of our freshmen enter the University with credits they have already earned through courses they took in high school, exams they have taken, or courses they have completed at another college or university. These credits may apply toward your degree at UL Lafayette. You should make sure to discuss with your advisor at Orientation what credits you believe you have earned, so they can use that information to best determine your class schedule for the fall.

Course Placement

UL Lafayette uses ACT, SAT scores, and/or overall final high school grade point average to place you into Math and English courses. Additionally, the ACCUPLACER exam can be used for placement into English and the ALEKS PPL assessment is suggested for Math placement. STEM majors (Ray P. Authement College of Sciences and College of Engineering) are encouraged to take the ALEKS PPL to identify the appropriate Math course for your math skills and academic goals.

The Office of Recruitment schedules the ACCUPLACER Writing exam for UL Lafayette. For more information about scheduling and taking the exam, please visit louisiana.edu/accuplacer.

The ALEKS PPL is an online assessment administered by the McGraw Hill Company. For testing information please visit, math.louisiana.edu/aleks.

Please consult our website to view where you will place based on scores: louisiana.edu/orientation/resources/placement-testing.

Dual Enrollment, Advanced Placement, and CLEP Credit

We accept dual enrollment credits from any regionally accredited college or university. Make sure that you have the college that has offered you dual enrollment credit submit your transcripts to us because your grades in those courses will be included in your college cumulative GPA.

We offer college credit for scores of at least a 3 on most AP exams. Have the College Board send a copy of your scores to the Office of Admissions and Recruitment. Check out the “Credit by Other Means” section of the University Catalog for details about which credits are offered for which exams.

Students who have taken College Level Examination Program (CLEP) exams or other recognized advanced placement programs are invited to submit transcripts of those examinations to the Office of Admissions and Recruitment for evaluation and possible credit. However, students may not earn credit through these programs for courses they have been registered for, audited, or failed at the college level. Credit will also not be offered through CLEP exams for courses which are prerequisites for a more advanced course for which they have already received credit.

With dual enrollment, AP, and CLEP credits, students should make sure to articulate to their advisor at Orientation exactly which courses they believe they have earned credit for. Advisors may not yet have access to a student’s scores or transcripts, and may schedule a student for a course they already have earned credit for. Credit that is accepted by UL Lafayette will not necessarily count toward requirements for your major. It is important to check with your academic advisor to see which credits your department and college will count toward major requirements.

Advance Credit Exams

The UL Lafayette Advance Credit Exam program offers high-achieving students an opportunity to earn course credit before they begin their first semester. Students are required to meet specific eligibility requirements to attempt one or more of the Advance Credit Exams. Each exam may only be attempted once. Reservations for these test dates are accepted by phone (where applicable) and are managed by academic departments.

To view a full list of exams, qualifications, dates and reservation information, please visit the orientation website: louisiana.edu/orientation/resources/placement-testing/advance-credit-exams





CREDITS ALREADY EARNED - TRANSFER STUDENTS

Will all my credit hours transfer?

All college level courses are transferable to the University from regionally accredited institutions. The Transfer Evaluation System (TES) and Transferology will assist you in reviewing what transfer work the University will accept. To access TES and Transferology: louisiana.edu/studentsuccess/transfer/will-my-credits-transfer.

Will my transfer hours count toward my GPA?

At UL Lafayette, all college level courses that you complete will transfer to the University and will be calculated into the UL Lafayette cumulative GPA.

Who is my academic advisor?

Transfer students are advised by the transfer advisor in the academic college for the first semester of enrollment. Transfer students are usually assigned a faculty advisor in the academic department after the start of the first semester.

Does UL Lafayette accept CLEP, AP or credit by exam?

Subject to limitations, UL Lafayette does accept credit earned through CLEP subject examinations, and College Board Advanced Placement (AP).

Will my military credit transfer?

UL Lafayette follows the recommendations of the American Council on Education's Guide to the Evaluation of Educational Experiences in the Armed Services and will grant credit for certain military schools, subject to the approval of the Director of Admissions and the student's academic dean.

How can I review my transfer credit?

All completed courses will appear on your University transcript (available in ULink). The transcript will list the UL Lafayette course equivalent of completed courses. You can review Degree Works (available in ULink) to determine how the courses satisfy degree requirements of your declared major.

Is there a limited amount of course credits that can be applied to a UL Lafayette degree from a community college?

UL Lafayette may apply up to 60 transferable hours from an accredited community college toward a baccalaureate degree.

How many hours must I take at UL Lafayette to graduate?

To graduate with a bachelor's degree, 25 percent of the required credit hours and the last 30 hours must be taken in residence at UL Lafayette. A minimum 2.0 GPA is required by the University to graduate. Some departments may require a higher minimum GPA and additional courses to be completed at UL Lafayette.

Can I make a fresh start at UL Lafayette?

A student who has not been enrolled in any college or university for a minimum of three complete years may apply for academic amnesty upon admission to UL Lafayette. Academic amnesty does not apply to individual courses. Academic amnesty must be requested for all previous college/university courses. Request for amnesty can be made by submitting a request to the Undergraduate Admissions Committee and/or speaking to the academic dean.





ACADEMIC EXPECTATIONS AND PROCEDURES

EXPECTATIONS

- Check University email account daily
- Learn the requirements of the declared major and be familiar with previously earned college credits
- Understand the University General Education requirements and monitor progress to ensure timely degree completion
- Schedule and attend academic advising appointments each semester and be prepared with questions
- Know and abide by the academic and disciplinary policies of the University found in the Code of Conduct
- Maintain a minimum 2.0 GPA each semester of enrollment

PROCEDURES

Changing Your Major

It is common for students to realize during their freshmen year that they are in the wrong major. Freshmen may change their majors in the Academic Success Center (ASC) in Lee Hall 115. Even if you're unsure, you can meet with an advisor to discuss your options.

Changing Your Classes: Dropping with a "W" vs. Schedule Adjustment (Drop/Add) Period

Students may adjust their schedules by dropping or adding classes online through the 8th day of the fall and spring semesters (4th day of the summer semester). After this date, students are no longer able to make changes through ULink and must contact the Academic Success Center or their academic dean's office.

Students may adjust their schedules by dropping or adding classes online until the 8th day of the fall and spring semesters (4th day of the summer semester). After this date, students are no longer able to make changes through ULink.

If you find later in the semester that you need to drop a class, you will earn a "W" (withdraw) on your transcript for the course. The "W" will not be calculated into your GPA. You will need to go to the Academic Success Center (ASC) to drop the class, at which time, you may also discuss any possible consequences of doing so. The last day to drop is mid-semester. Please see the academic calendar for the exact day: louisiana.edu/registrar/registration/academic-calendar.

Resigning: Dropping All of Your Classes

In extreme circumstances, a student may be unable to complete courses in a given semester. The best thing to do in this scenario is to go to the Academic Success Center (ASC) in Lee Hall 115 and meet with an advisor to discuss the situation and then schedule a meeting with a financial aid counselor. A student may resign from the University by dropping all registered credits. At this time, the student is no longer considered enrolled at UL Lafayette and will need to re-apply in order to return at a later date. Resigning from the University may have implications for financial aid, housing, athletic eligibility, and more. Make sure to carefully discuss resigning with an advisor.

ACADEMIC RESOURCES

THE ACADEMIC SUCCESS CENTER

To meet with an academic advisor year-round, or when your advisor is not otherwise available, go to the Academic Success Center (ASC) in Lee Hall 115. ASC advisors can answer questions about academic issues or provide guidance about processes like changing your major or dropping a class.

Grade Alerts (Student Success Manager)

The Academic Success Center administers regular grade alerts throughout the semester. Professors of select courses will be prompted to report on students' progress throughout the semester. If you are marked "At Risk of Failing," you will receive an email. Make sure you take action upon seeing the email. You should first meet with your professor to discuss your problems in the course. If you need further help, it might be time to meet with an academic advisor in the ASC or visit The Learning Center to talk about tutoring, study skills, and/or time management.

Transfer Students

Transfer Students are students admitted to UL Lafayette after attending another college or university beyond high school dual enrollment programs. For questions regarding transfer credit, please contact the University Transfer Coordinator by calling 337-482-1262 or emailing transfer@louisiana.edu.

Contact Information

Academic Success Center

Lee Hall 115

337-482-6818

success@louisiana.edu

louisiana.edu/studentsuccess



OFFICE OF FIRST-YEAR EXPERIENCE

Attending college is a big change. As with any of the big changes you encounter in life, college can be both exciting and stressful. The Office of First-Year Experience helps you manage this transition. OFYE has created programs and services to assist students and their families throughout the process of joining the UL Lafayette community. These include:

Cajun Connection is a required component of the First-Year Seminar. It introduces students to UL Lafayette, university life and academics. Topics covered during Cajun Connection include time management, study skills and strategies, major and career choices, and identifying and utilizing campus resources. Students are encouraged to become active participants in their learning and to engage fully in university life. Cajun Connection prepares students for the rigors of college and is a great start to the academic year.

UNIV 100: First-Year Seminar is a course specifically designed to assist students as they transition into college-level coursework. Students will choose from either Mastering the First-Year or a theme-based course designed to refine critical thinking skills, develop research capabilities, and enhance oral and written communication.

Programs for First-Year Students include educational and social events throughout the year. Annual events include New Student Convocation which is the official academic welcome for first-year students, Freshmen Week that involves a special week of events, and a day of community service called The Big Event. Every spring, first-year students are celebrated at Freshman Finale for completing their first year of college. Students also receive support throughout their first semester from a peer mentor who is an upperclassman that attends their UNIV 100 class and helps students to transition to college.

Living Learning Communities offer enrichment experiences to first-year residential students who share the same academic or personal interests. Students selected to participate live together in a residence hall and attend special events together. Benefits of participating in a Living Learning Community include meeting people who have a common goal, increasing interpersonal skills, growing in autonomy and independence, and enhancing academic performance.

Second-Year Experience (SYE) Program is designed to support students as they navigate their second year of college, a time often filled with new challenges and opportunities for growth. SYE offers resources, events, and programs that help students build on the foundation they created during their first year.

Contact Information

Office of First-Year Experience
337-482-6599
ofye@louisiana.edu
louisiana.edu/firstyear

THE LEARNING CENTER

The Learning Center is the place to visit when you need help with an academic subject. Its main goal is to assist you in achieving academic success.

Services of The Learning Center include free one-on-one tutoring, study group tutoring, Supplemental Instruction (SI), online tutoring, a STEP computer lab, and other online resources. These services are available to all enrolled students. Tutors are available at The Learning Center for almost all 100- and 200-level math and science courses as well as accounting, economics, engineering, languages, psychology, and statistics.

Students can walk in, call 337-482-6583, or chat with us on Microsoft Teams to schedule their next appointment. Study/SI groups do not require an appointment. The updated list of subjects-tutored can be found on our website or on any of our social media pages (Instagram and Facebook).

Contact Information

The Learning Center
337-482-6583
tlc@louisiana.edu
louisiana.edu/tutoring

THE WRITING LAB

Students who visit the Writing Lab report higher grades and more confidence in writing. Bring any of your writing needs here for a free 50-minute session with a trained writing tutor. We welcome students during all phases of writing for a variety of services:

- Brainstorming and planning for an assignment
- Checking over a paper before submitting it
- Writer's block and procrastination
- Drafting in a friendly, dedicated writing space
- Revising after you've gotten teacher's comments
- Grammar, style, and ESL issues
- Academic essays, creative writing, resumés, statements of purpose, emails, and just about any other written project

We are conveniently located on the first floor of Dupré Library, right around the corner from the Reference Online Center. Book a session with us on our web page; drop-ins are also welcome!

Contact Information

The Writing Lab
337-482-5224
writinglab@louisiana.edu
louisiana.edu/writinglab



ACADEMIC TERMINOLOGY

Catalog

The catalog includes important information such as admissions policies, academic minors, course descriptions, courses needed for each major and degree program, and a listing of course offerings. It can be viewed online at catalog.louisiana.edu.

Classification

Classification is a term applied to students and is determined by the number of credit hours a student has earned. Classification is determined strictly by credit hours earned, not by semesters spent taking classes. A student's classification is determined accordingly:

- **Freshman:** A student who has not yet earned 30 semester hours of college credit.
- **Sophomore:** A student who has earned at least 30, but fewer than 60 semester hours of college credit.
- **Junior:** A student who has earned at least 60, but fewer than 90 semester hours of college credit.
- **Senior:** A student who has earned a minimum of 90 semester hours of college credit.

Corequisite

A corequisite is a course required to be taken simultaneously with another course. Corequisites are listed in the Undergraduate Catalog under course descriptions.

Credit Hour

A credit hour is a measurement of course work registered, usually given for one hour of class attendance per week per semester. Laboratory classes may require two to three "clock hours" to earn one semester credit. Typically, a 3 credit-hour lecture course will be offered 50 minutes 3 times/week, 75 minutes 2 times/week, or 150 minutes 1 time/week.

Degree Works

Degree Works is a web-based planning tool that allows you and your advisor to monitor your academic progress towards a degree.

Drop/Add

Also known as the Schedule Adjustment Period, drop/add is the time period during which a student is able to adjust their schedule of classes in the beginning of term/part of term. Following drop/add, students may not self-manage their registration. Please refer to the Academic Calendar for the exact dates.

Full-Time Status

Full-time status in fall/spring semester means maintaining 12 or more hours. See the Registrar's Office website for full-time status in a summer semester. Maintaining full-time status is important to students receiving financial aid, UL Lafayette scholarships, and/or TOPS. Students who have TOPS must keep 12 hours through the 15th class day during the fall/spring semesters.

Grade Checks

Grade checks enable faculty to report class progress, absences, grades, and other useful feedback to students. Grade checks for freshmen and sophomores occur two to three times throughout the semester. Students who are identified as "at-risk" of not succeeding in a class by their professors may be sent an email alerting them of their standing and information on campus resources. Not all faculty utilize grade checks, so it is important for students to know and understand their own course grades.

Grade Point Average/GPA

Grade point average is calculated every semester/term as well as cumulatively. To calculate semester or cumulative GPA, first assign quality points to the course grade, and then multiply the total quality points by the total credits. Divide the new total by the total number of credits. Quality points are assigned to grades as follows: A = 4, B = 3, C = 2, D = 1, F = 0.

Course	Grade	Hours	Qual. Points
UNIV 100	A	3	12
ENGL 101	B	3	9
HIST 101	A	3	12
MATH 105	C	<u>3</u>	<u>6</u>
		12	39

Calculate Semester GPA average — $39/12 = 3.25$

Moodle

Moodle is the University's learning management system. It facilitates learning outside the classroom. Faculty frequently use Moodle to post the class syllabus, reading and writing assignments, class announcements, quizzes, exams, and grades. It is very important that students log in to check Moodle frequently to stay informed about their classes.

Prerequisite

A prerequisite is a specific course that is required to be completed before another course may be taken. Prerequisites are listed in the Undergraduate Catalog under course descriptions.

Schedule of Classes

The Schedule of Classes lists all classes being offered in a particular semester/term. The Schedule of Classes contains course offerings and availability, building abbreviations, classroom numbers, and instructor names (when available). Remember to check the Schedule of Classes often before the registration period begins, as the listings may change as courses are added, removed, or edited. Browse Classes to see what courses are offered during the term via this link: louisiana.edu/registrar/registration/schedule-classes



Student Cashier Center/Bursar

The Student Cashier Center is where students may go to make payments on their tuition and fees, housing and meal plans, and other charges. The Student Cashier Center is located in the Student Union, Room 135. Students may make payments on their accounts with cash or check only at the Student Cashier Center. Students can make payments via credit or debit card in ULink.

ULID (Username)

The ULID is a student's university identification number. The ULID is also used as the username to access ULink, Moodle, email, financial aid, and many other online resources. Students should memorize their ULID as soon as possible.

ULink

ULink is the University's web portal where students can register for classes, access Moodle, email, and other helpful links, and view other student account information. Fees may also be paid through ULink. Students access ULink using their ULID and password.



TIPS FOR SUCCESS

How many credit hours should I schedule?

A first-time freshman should schedule 12-15 hours in the first semester, which is a reasonable load for a first-year student. Whether you are employed should also be taken into consideration when making this decision. Note that if you schedule fewer hours in any semester than are listed in your curriculum, you may not graduate at the end of eight semesters (four years) unless those hours are made up in another semester or summer session.

How important is class attendance?

Class attendance is *incredibly* important! Attending class regularly is the easiest thing students can do to ensure a higher class grade. Coupled with an adequate study schedule, students who attend class do better academically than students who skip class. Specific class attendance policies are dictated on course syllabi and are at the discretion of faculty members teaching courses. Extenuating circumstances (extreme illness, family death, etc.) may cause students to miss class for extended periods of time. In these cases, students should contact the Dean of Students Office at (337) 482-6272 or deanofstudents@louisiana.edu to get an extended absence excuse.

How important is it that I get the textbooks for my classes right away?

It is very important to get the required textbooks for each of your classes as soon as possible. Professors frequently assign readings and activities from textbooks early in the semester and waiting to get your textbooks can put you behind in your classes. Textbooks can be purchased new or used from the campus bookstore or online. Some textbooks are also available for rental and in e-book format. Keep in mind the cost of college textbooks and try to budget accordingly.

How many hours a week should I be studying?

In general, students should be studying 2 hours outside of class for each credit hour they take during a semester. This means that if a student is enrolled in 15 credit hours, he or she should be spending about 30 hours outside class per week studying and preparing for class.

I have to work to pay for school. How many hours should I work per week?

The ideal maximum load for outside employment is around 15-20 hours per week. Working more than 20 hours per week can hurt a student's ability to have adequate time to study as well as time for outside interests or obligations. Students who are interested in working on campus can inquire about work-study eligibility and/or availability at the College Work-Study Office in Foster Hall 221 or inquire about other (non-federal work-study) on-campus jobs at the Office of Career Services in Agnes Edwards Hall 104.

What do I need to do to maintain my TOPS eligibility?

Students who receive Louisiana TOPS must complete 24 credit hours in the academic year. Students must be registered for 12 or more credit hours on the 14th class day in order to receive TOPS in any given semester. The total of 24 semester hours for TOPS eligibility can be earned over the course of the fall semester, winter intersession, spring semester, May intersession, and summer terms. Students receiving TOPS must also maintain a minimum 2.0 cumulative GPA after the fall semester and a minimum 2.3 cumulative GPA at the end of their first spring semester. A minimum 2.5 cumulative GPA is required at the end of your next academic year. TOPS Performance and Honors require at least a 3.0 GPA at all times.



ACADEMIC LAGNIAPPE

MAJOR & CAREER EXPLORATION CENTER

Career Services, Agnes Edwards Hall 104

Lauren Fontenot Landry

337-482-1444

louisiana.edu/career

exploration@louisiana.edu

Undecided? Unsure? Career Services can help you with your major & career exploration and decision-making needs. Access our online career assessments to examine your skills, interests, strengths, personality preferences, and more. Schedule an individual appointment to learn more about connecting majors to careers or attend a workshop to start building a plan for your future goals.

You can visit Career Services to find your “best fit” major and career path.

- Career Assessments
- Individual Meetings
- Workshops & Classes
- Online Resources

Career Services is also your job preparation and job search headquarters!

ACADEMIC HONORS & AWARDS

Semester Honors: Students who do exceptionally well in their studies at UL Lafayette receive special recognition. At the end of each regular semester, full-time, degree-seeking students will receive notification of semester honors for the following two areas:

Dean's List: Semester GPA of 3.5

President's List: Semester GPA of 3.8

Honors Convocation: The special event held each spring recognizes sophomores, juniors and seniors who have maintained a cumulative GPA of at least 3.50 on all college work pursued.

Honors At Graduation: To earn a degree with honors, students must demonstrate exceptional scholarship. Students can receive three different levels of Honors at Commencement:

Summa Cum Laude: 3.9 cumulative GPA

Magna Cum Laude: 3.7 cumulative GPA

Cum Laude: 3.5 cumulative GPA

Students who complete certain extra requirements through the University Honors Program will be eligible to receive an Honors Baccalaureate Degree.





UNIVERSITY HONORS PROGRAM

Dr. Emily Kennison Sandoz, Director

Judice-Rickels Hall 206

337-482-6700

honors.louisiana.edu

honors@louisiana.edu

The University Honors Program provides highly motivated students with a set of unique intellectual and educational opportunities designed to help them reach their potential.

Students in the Honors Program benefit from the following opportunities and resources:

- Smaller class sizes and contracts to personalize their education
- An opportunity to complete an undergraduate thesis and have it published
- Work with Honors professors
- Research opportunities
- Honors Seminar
- Honors scholarship opportunities
- Social and Academic Support Events
- Honors Living Learning Communities
- In-house computer lab and services in Judice-Rickels Hall

Qualifications

First-time freshmen qualify for the Honors Program with an ACT composite of 23 (SAT 1130) and 3.5 GPA or higher. Students must apply to the program by attending the Honors Program meeting during Orientation. Students may also apply to the program at any point in their undergraduate careers if they have at least a 3.5 GPA.

Program Requirements

To remain in the Honors Program, students must complete the following requirements:

- Maintain a 3.5 GPA
- Complete 18 credit hours of Honors courses during their undergraduate careers
- Enroll in and attend an Honors Seminar each semester of enrollment in the Honors Program
- Complete a research project





COLLEGE OF THE ARTS

The College of the Arts nationally accredited pre-professional programs are delivered and supported by outstanding faculty and staff committed to your success on campus and after graduation. Our facilities and performance venues have state-of-the-art classrooms, studios, and laboratories. Angelle Hall is home to our Music program and 800 + seat performance space, classrooms, individual practice studios, and labs supporting ensemble performances, piano pedagogy, digital music and media, music education, theory, composition, and recording arts. Burke-Hawthorne Hall houses our 200 + seat theater, with studio spaces for costume, set design, and technical theatre. McLaurin Hall is the home of our dance and theatre programs, with studios and rehearsal spaces. Fletcher Hall and the Visual Arts Annex houses architecture, industrial, interior design, 2D & 3D visual arts, digital arts, and animation studios supported by our Digital Media Resource Center and Fabrication lab and 130 + seat multimedia lecture and performance space.

DESIGN PROGRAMS

The Design programs are rooted in cultivating dynamic and resourceful designers who are dedicated to creating socially generous, culturally rich, life-affirming, and cooperative environments for all people.

Architecture

The Architecture program prepares students to excel in careers related to architecture and the creation of socially, culturally, and environmentally responsive spaces. The degree programs consist of a four-year pre-professional Bachelor of Science degree and the professional Master of Architecture degree. The Master of Architecture degree, accredited through the National Architectural Accrediting Board (NAAB), is required to become a licensed architect.

Industrial Design

The Industrial Design program, the only one of its kind in Louisiana, is accredited by the National Association of Schools of Art and Design (NASAD) and grants the Bachelor of Industrial Design degree. This program encourages students to engage their creative potential to craft the products that improve our social, cultural, and functional relationships with the world. The program is dedicated to cultivating its students to be critical thinkers, accomplished communicators, and innovators who have a thorough understanding of the needs of the people they design for.

Interior Design

The Interior Design program prepares students for careers involving the investigative creation of functional, quality interior spaces that enhance the health, safety, and welfare of all patrons. Accredited by the Council for Interior Design Accreditation (CIDA) and the National Association of Schools of Art and Design (NASAD), the program grants the degree of Bachelor of Interior Design. Students that earn the Interior Design degree have completed the education requirement for pursuing professional licensure in Louisiana.

MUSIC & PERFORMING ARTS

As a vibrant community of artists and scholars, the School of Music and the School of Dance and Theatre exist to provide rigorous professional training within the context of a comprehensive liberal arts education.

Music

Graduates who earn music degrees go on to work as performers, teachers, audio engineers, composers, songwriters, arts administrators, promoters, agents, and managers. While we offer several concentrations at the bachelor's and master's levels, students in all concentrations gain the skills to excel in several of these endeavors after they graduate, usually as self-employed entrepreneurs or full-time teachers. The Bachelor of Music degree requires an audition as a vocalist or instrumentalist and study of that instrument for four years; concentrations include Performance, Music Media (music technology, recording, and film scoring), Theory/Composition, Piano Pedagogy (for future piano teachers), and Jazz Studies. The Bachelor of Arts (BA) in traditional music involves the study of roots music styles learned by ear (such as Cajun music, zydeco, blues, and bluegrass) and requires an audition. The BA in Music Business includes coursework in communication, business, and the music industry; it requires no audition but some study of music theory and performance. The new BA in Recording Arts includes coursework in audio production, music synthesis, beat making, digital editing, live event production, and DIY recording. There are no audition or performance requirements.

The BA with concentrations in Instrumental or Vocal Music Education requires an audition and is offered in conjunction with the College of Education; it prepares students to teach music at the elementary and secondary levels. Master's students in Music specialize in Performance, Music Education, Theory/Composition, Conducting, or Pedagogy.



Dance

Students majoring in Performing Arts with a concentration in Dance pursue a Bachelors of Fine Arts degree. Physical training is balanced with theory, lecture and detailed study of the art form and rounded out with performance opportunities that put studio training into practice. With an abundance of choreographic and production opportunities throughout their undergraduate training, students gain vital experience as performing artists and hone the skills needed to navigate a working artist's life. Grounded in their craft and in command of their creative vision, graduates in performing arts dance concentration are well-rounded, socially aware, entrepreneurial individuals who possess the skills and dispositions needed to compete successfully in the professional arena or continued graduate study.

Theatre

Students majoring in Performing Arts with a concentration in Theatre pursue a Bachelors of Fine Arts degree, with options to take a balanced approach to all areas of the theatre or to focus on Acting, Theatre Design/Technology, or Directing. Grounded in intensive theatre training and broad experiences in the liberal arts, students undertake coursework designed to build, strengthen, and solidify an understanding of technique and individual artistic

vision. The study of theatre at UL Lafayette is unique because of the emphasis on pre-professional training within the context of a comprehensive liberal arts course of study. Students will focus on rigorous and active training in theatrical coursework in alignment with their area of focus, along with the opportunity to be a part of six or more productions per year. The NAST-accredited curriculum explores the process, complexity, and richness of theatrical production while challenging students with the intellectual discipline necessary for the theatre.

VISUAL ARTS PROGRAMS

The Department of Visual Arts at the University of Louisiana at Lafayette is accredited by the National Association of Schools of Art and Design and is the second-largest art department in Louisiana. The Department offers a Bachelor of Fine Arts Degree in Studio Art, with nine concentrations that students can choose from, including Animation, Ceramics, Graphic Design, Media Arts, Metalwork and Jewelry, Painting, Photography, Printmaking, and Sculpture. Additionally, it also offers a Bachelor of Arts in Education with a concentration in Art Education in collaboration with the College of Education.

The Department of Visual Arts provides a unique opportunity for students to learn, work, and create within a special arena that combines traditional art with modern tools and technologies. This unique approach allows students to realize their artistic vision and potential, earning the department a reputation as one of the best undergraduate art programs in the South.

Visual Arts students have access to state-of-the-art studios, faculty, and resources, which help them learn and compete in their fields. Their experiences are enriched by exhibitions, connections with the Hilliard University Art Museum and the Fletcher Hall Gallery, and trips to regional museums and galleries. Visual Arts students also have opportunities to participate in student clubs and groups, the Marais Press, and workshops with nationally recognized visiting artists, critics, and lecturers.

Contact Information

Dean,
Daryl Joseph Moore
337-482-6224
daryl.moore@louisiana.edu

Associate Dean,
Kari Smith
337-482-1425
kari.smith@louisiana.edu

Assistant Dean,
Lori D. Crain
337-482-1426
lori.crain@louisiana.edu

Assistant Dean,
Communications, Events,
and Exhibitions,
Michael Eble
337-482-5318
michael.eble@louisiana.edu

Architecture and Design
337-482-6225
soad@louisiana.edu

Dance and Theatre
337-482-6357
pfar@louisiana.edu

Music
337-482-6012
music@louisiana.edu

Visual Arts
337-482-6056
visualarts@louisiana.edu

arts.louisiana.edu
arts@louisiana.edu



B.I. MOODY III COLLEGE OF BUSINESS ADMINISTRATION

The B.I. Moody III College of Business Administration educates and prepares future business professionals. By combining core business foundation classes with specialized courses, students develop the skills and experiences necessary to compete globally. The Moody College of Business Administration is accredited by the Association to Advance Collegiate Schools of Business International (AACSB).

UNDERGRADUATE PROGRAMS

Earn your Bachelor of Science in Business Administration by choosing from our eight majors. Enhance your education with a minor in a different business discipline. Non-business majors can earn a business minor in addition to their degree concentration.

Majors

- Accounting
- Economics
- Finance
- Hospitality Management
- Insurance and Risk Management
- Management
- Marketing
- Professional Land & Resource Management

Minors & Concentrations

- Accounting
- Business Analytics
- Business Minor for Non-Business Majors
- Economics
- Entrepreneurship
- Finance
- Food Service Management
- Hospitality Management
- Human Resource Management
- Insurance and Risk Management
- International Business (for Business Majors)
- Investments and Portfolio Management
- Legal Studies
- Management
- Marketing
- Professional Sales
- Promotional Management Minor for Non-Business Majors
- Tourism

MASTER'S PROGRAMS & GRADUATE CERTIFICATES

Our graduate programs offer students with varied undergraduate degree backgrounds the opportunity to develop skills and knowledge to progress in management and leadership positions.

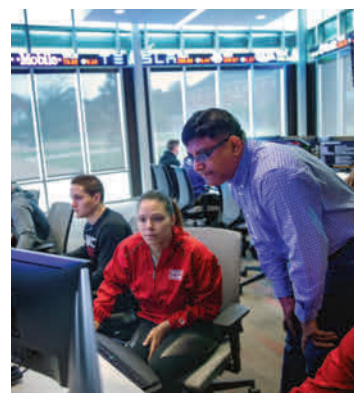
- Master of Business Administration – on campus or 100% online
- Master of Science in Accounting – 100% online
- Graduate Certificate in Business Administration
- Post-Bachelors Certificate in Accounting

OFFICE OF STUDENT SERVICES

The Moody College of Business Administration supports its students from Orientation through Commencement. Our knowledgeable staff helps you progress through your degree program and can assist you with various academic services.

These include:

- Transfer student advising
- Coordination and support of continuing student advising
- Registration assistance
- Change of major, drop a class, or resignation
- Scholarship opportunities
- Application for graduation



LEARNING LABS

The Moody College of Business offers facilities for experiential learning and networking with industry professionals.

Lunch Club is a student-operated, 45-plus seat restaurant and commercial kitchen on campus. Students gain food service operations experience that includes menu development, budgeting, staff management, culinary arts, and guest service.

Maraist Financial Services Lab is a \$2.5 million state-of-the-art learning environment that opened in August 2018. Located in F. G. Mouton Hall, it features Bloomberg Terminals, electronic ticker tape display, and digital market data board. The Bloomberg Terminals are the same technology used by the world's leading banks, corporations and government agencies. Students can gain experience in portfolio management, financial strategy and markets, trading, modeling, and business performance analysis.

Northwestern Mutual Sales & Research Lab provides a learning environment for students to train for professional sales presentations in an interactive, real-world business setting. The lab features three simulation rooms, a conference room, and a classroom, each equipped with audio and video digital recording



technology that enables simultaneous live viewing of sales presentations and real-time critiques.

Entrepreneurship Think Tank provides students with access to 3D printers, laser cutters, and collaboration spaces. The Collegiate Entrepreneurs' Organization leadership team manages this space and helps to train other students about the technology as well as to collaborate and develop business ideas.

INTERNSHIPS

The Moody College of Business Internship Program provides juniors and seniors the opportunity to gain work experience related to their major while receiving academic credit. Students seeking to learn more or enroll in the internship course should contact the college's internship coordinator.

STUDENT ORGANIZATIONS & HONOR SOCIETIES

Getting involved helps you grow as an individual, meet new people, build relationships, and network with professionals. Our student organizations provide opportunities to develop skills needed in business such as teamwork, planning, organizing, leadership and communication.

Business

- Beta Gamma Sigma
- Delta Sigma Pi
- Moody College of Business Student Government Association

Accounting

- Beta Alpha Psi
- Institute of Management Accountants
- Student Center for the Public Trust

Economics & Finance

- College Economics Organization
- Financial Management Association
- Financial Management Association National Honor Society
- Risk Management and Insurance Society

Contact Information

Dr. Linda Nichols, Dean
337-482-6492

Office of Student Services
Jill Lemaire, Assistant Dean
337-482-6205
studentservices@louisiana.edu

Internship Program
337-482-5836
internship@louisiana.edu

Accounting
337-482-6218
accounting@louisiana.edu

Economics, Finance, &
Insurance and Risk Management
337-482-6662
ecfn@louisiana.edu

Management, Hospitality Management &
Professional Land and Resource Management
337-482-6087
management@louisiana.edu

Marketing
337-482-6347
marketing@louisiana.edu

Graduate & Executive Programs
337-482-6119
mbadirector@louisiana.edu

@ULMoodyBusiness

@moodycollegeofbusiness

business.louisiana.edu

Management

- Eta Sigma Delta Honor Society (Hospitality Management)
- Collegiate Entrepreneurs' Organization
- Ragin' Hospitality Association
- Student Association of Professional Landmen
- UL Lafayette Society for Human Resource Management

Marketing

- American Marketing Association
- Pi Sigma Epsilon

Master of Business Administration

- MBA Association

BUSINESS SECRETS LIVING LEARNING COMMUNITY

The Business Secrets LLC is a residential community for freshmen, open to all majors and designed to introduce the world of business to students. In addition to sharing classes and living together, students will strengthen their education through a variety of learning experiences offered at academic and social events. Space is limited. Visit louisiana.edu/llc for more information.

SCHOLARSHIPS FOR BUSINESS STUDENTS

The Moody College of Business awards more than 250 scholarships each year totaling about \$500,000. The scholarship application period begins each spring semester. Eligible business students are invited by email to submit a scholarship application for college awards for the upcoming academic year.

COMPUTER LABS & STUDENT LOUNGES

- Student Technology Enhancement Program (STEP) computer labs are common areas for student use and printing (using your PaperCut account). Two labs are located in F. G. Mouton Hall, rooms 106 and 112.
- Student lounges are in the lobby of the 1st and 2nd floors of Moody Hall and F. G. Mouton Hall 1st floor.
- The Entrepreneurship Think Tank provides students with access to 3D printing and laser cutting and is located in F.G. Mouton Hall, Room 107.



COLLEGE OF EDUCATION & HUMAN DEVELOPMENT

The University of Louisiana at Lafayette's College of Education & Human Development is a dynamic and comprehensive unit with outstanding faculty who focus on teaching, learning, and the development of students of all ages and levels from pre-school to geriatric.

The mission of the College of Education & Human Development is built on the three pillars of the academy: teaching, scholarship, and service. A commitment to high standards in each of these areas enables the college to be responsive to community, regional, and state needs while addressing national and international concerns. Through teaching, scholarship, and service, the college strives to prepare outstanding teachers, educational leaders, and other professionals in related domains, while developing viable public-private partnerships, which systematically improve education. This mission, being fundamental and timeless, represents the professional and ethical imperative of the College of Education & Human Development to be attentive to the needs of contemporary college students and to the challenges of serving a diverse, modern society.

DEGREE OFFERINGS - TEACHER CERTIFICATION

The knowledge base for the college's basic education programs includes a core of courses required for all students. Additional general education and specialty area courses are required of education majors to meet the college's objectives and the certification requirements of the Louisiana Department of Education.

DEGREE OFFERINGS - KINESIOLOGY - NON-CERTIFICATION MAJORS

The School of Kinesiology focuses on studying people's responses to physical activity and exercise, while promoting health and physical well-being. Because human movement is inherently complex, we offer a number of kinesiology concentrations, including pre-professional studies, fitness studies, health and physical education, health and promotion wellness, sport management and pre-athletic training. Athletic training is available as a graduate program.

CERTIFICATION MAJORS

Art or Music Education (K-12)

Art

Instrumental Music

Vocal Music

Early Childhood Education (Pre-K-3)

Elementary Education (1-5)

Health and Physical Education (K-12)

Middle School Education (4-8)

English

Mathematics

Science

Social Studies

Secondary Education (6-12)

Biology

Business

Chemistry

Earth Science

English

General Science

Mathematics

Physics

Social Studies

Speech

NON-CERTIFICATION MAJORS

Kinesiology, Exercise Science Pre-Professional Studies Concentration

Kinesiology, Exercise Science Fitness Studies Concentration

Kinesiology, Online Health Promotion and Wellness Concentration

Kinesiology, Sport Management Concentration

Kinesiology, Pre-Athletic Training Concentration





PROGRAMS AND CENTERS

The college has several programs and centers that make it unique in the fields of teacher preparation and kinesiology. The college is committed to research and its application to real world settings, using both schools and the workplace as laboratories for the teaching profession and as settings for conducting research.

The Reading Institute is used primarily to provide support for senior-level undergraduate students and graduate students in the reading program. It also provides support for students from area schools needing individualized literacy instruction.

The Instructional Materials Center offers a variety of book and non-book resources for faculty, staff, teachers, and students in the College of Education & Human Development.

The Center for Gifted Education is an instructional, research, and service center dedicated to the education of gifted and creative students.

The Center for Innovative Learning and Assessment Technologies (CILAT) engages in research and development of technology tools for enhancing teaching and learning, including educational robotics, games, and simulations.

The Center for Excellence in Education (CEE) serves as an interdisciplinary hub for synergistic and collaborative endeavors related to the advancement of K-20 education across the region, state, and nation.

Louisiana Center for Research and Education on Languages and Literacies (LA CREoLL) has an overarching goal to support, enhance, develop, and transform multilingual language and literacy education in Louisiana to empower teachers, learners, families, and communities.

The Human Performance Laboratory is a 1,500 square foot facility that is used to examine physiological responses during and after exercise. The facility can examine exercise metabolism, body composition and muscular strength and power with highly validated and reliable instrumentation.

The Teaching Individualized Movement Education (TIME) Program is a physical activity-based program for community members with disabilities, led by kinesiology students. Through this service to the community, students gain hands on experience working with individuals with disabilities.

The Exercise Biochemistry Laboratory is a 600 sq. ft. space dedicated to the detection of biomarkers in the circulation and changes in biological components in tissues and organs from various sample types. The facility has all the necessary equipment to perform cell culture as well as immunoassays, PCR, and western blot with high precision.

ACCREDITATIONS AND ACCOUNTABILITY

The University of Louisiana at Lafayette and its College of Education & Human Development are accredited by several agencies:

- The college was accredited by the National Council for Accreditation of Teacher Education (NCATE) from 1954 until we received full accreditation by the Council for Accreditation of Educator Preparation (CAEP) in 2019.
- Southern Association of Colleges and Schools (SACS): The University of Louisiana at Lafayette is accredited by the Commission on Colleges of the Southern Association of Colleges and Schools.
- Louisiana Department of Education: All teacher education licensure programs are approved by the Louisiana State Board of Elementary and Secondary Education.

SCHOLARSHIPS

Each year the College of Education & Human Development awards more than \$120,000 in scholarships. Scholarship applications can be downloaded from the college's website.

CLUBS AND ORGANIZATIONS

Educators Rising Collegiate Chapter
Kappa Delta Pi Educational Honor Society
Kinesiology Professional Association (KPA)
Sports Medicine Association
Women in Kinesiology Society

Contact Information

coe.louisiana.edu
education@louisiana.edu

Dr. Tracey Cross, Dean
337-482-6678

Office of Student Services
337-482-6681

Office of Teacher Clinical Experience
337-262-1067



COLLEGE OF ENGINEERING

At the University of Louisiana at Lafayette, the College of Engineering prepares its students to be professionals and leaders through exceptional academic programs. The college partners with its students to develop a path for their own journey and help them design their futures. It is committed to excellence in education and research. It maintains national accreditation in all programs. The college directs its educational and research activities toward the development, design, and implementation of new technology systems that will impact our global human and ecological systems. These activities span basic discovery through commercialization of new technology concepts. The college features a nationally recognized program that focuses on providing students with solid technical skills, the learning of the innovation aspect of design, and strong interpersonal skills needed to lead a team. Degree programs include bachelor's, master's, and doctoral programs.

As a nationally recognized research college, engineering and engineering & technology management students are provided classroom experiences deeply rooted with both current and developing design methods. Numerous technology development and design projects continue within the college with many of these efforts allowing both undergraduate and graduate students opportunities to contribute. Examples include the development of the following: safe and improved methods for finding and capturing natural gas to make the U.S. energy independent; discovery of innovative biomedical devices for improving human health; designing solutions for protecting diminishing coastal ecosystems; development of robotic systems that offer improved task performance; alternative energy technologies that are ecologically friendly yet economically viable; development of optimized data transmission and management methods; production of new advanced materials with greatly improved capabilities; and the discovery of new methods to effectively manage waste with the potential for reuse as new product feedstocks.

The college also acts as a technical resource for both national and regional industrial and business communities by providing technology transfer and technical assistance. In fact, the National Science Foundation ranks UL Lafayette as a Top 10 University for Working with Industry. Our engineering graduates consistently score well on the Fundamentals of Engineering examination and find employment regionally, nationally, and internationally.



The engineering and engineering & technology management curricula emphasize intensive problem solving, “hands-on” laboratory experience, and enhanced management and business knowledge. The natural sciences and mathematics together with the humanities and social sciences provide students with a suitable education for entry into the engineering or engineering & technology management professions and also enables them to study for advanced degrees.

ADVISING

At Orientation, first-time freshmen are advised in a group setting. After Orientation, students are assigned a permanent advisor within the department of their major. Students, in a more collegial setting, may discuss academic matters during the advisor's office hours. Appointments may be scheduled outside these times.

STUDENT ORGANIZATIONS

The college and individual departments host many student engineering societies. College groups include the Louisiana Engineering Society, the National Society of Black Engineers, and the Society of Women Engineers. Flyers are posted in both Rougeou

and Madison halls announcing meeting times for these groups. Chemical Engineering hosts the student branch of the American Institute of Chemical Engineers. Civil Engineering sponsors the student branch of the American Society of Civil Engineers. Electrical and Computer Engineering hosts the student branch of the Institute of Electrical and Electronics Engineers, while the Engineering Technology Department hosts the student branch of the Association of Technology, Management, and Applied Engineering. Mechanical Engineering sponsors the student branch for the American Society of Mechanical Engineers, while Petroleum Engineering hosts the student chapter of the Society of Petroleum Engineers. Announcements of meeting times are posted at the departmental



offices and in the departments' student activity rooms. Honor societies within the College of Engineering include Tau Beta Pi, Omega Chi Epsilon, Chi Epsilon, Eta Kappa Nu, Pi Tau Sigma, and Pi Epsilon Tau. Induction into these societies is based on academic performance and is by invitation.

SPECIAL PROGRAMS

The college provides its students with opportunities to graduate with special skills learned through a variety of programs unique to the UL Lafayette College of Engineering. Examples include the Designing Leaders Program, which teaches students skills on how to be effective leaders; the Undergraduate Research Apprentice Program, which allows students to actively participate within technology research and development teams; the Engineering Ambassadors Program, a service-based organization where selected students volunteer for outreach activities in order to attract students to the college; and opportunities to learn engineering and technology concepts within industry settings through participation in either the Cooperative Education or Industry Interns programs. The overarching goal of the college is to produce engineers and technologists who graduate with the strong technical, leadership, and interpersonal skills they'll need in industry or while pursuing an advanced degree. More information listed at engineering.louisiana.edu

MAJORS

Chemical Engineering
 Bioengineering Concentration
 Civil Engineering
 Water Resources & Environmental Engineering Concentration

Electrical and Computer Engineering
 Computer Engineering Concentration
 Power & Sustainable Energy Concentration
 Secure Smart Systems Concentration
 Engineering and Technology Management
 Mechanical Engineering
 Autonomous & Robotic Systems Concentration
 Sustainable Energy Systems Concentration
 Petroleum Engineering
 Smart Oilfield Concentration

SPECIALTY MINORS

The UL Lafayette College of Engineering offers specialty minors to undergraduate students who wish to expand their expertise in trending fields of engineering and technology. The college currently offers the following specialty minors: biomedical engineering, bioprocess engineering, bioprocess technology, coastal engineering, environmental engineering, manufacturing, materials engineering, pre-MBA, renewable energy, and technology commercialization.

ACCELERATED BACHELOR'S/MASTER'S PROGRAM

The College of Engineering offers an Accelerated Bachelor's/Master's Program in all majors, enabling qualified students to complete both degrees faster and more affordably, with up to nine graduate credit hours counting towards both degrees. For more information visit the Graduate School website: louisiana.edu/graduateschool/accelerated-degree-programs

Contact Information

Dean of Engineering
 Dr. Ahmed Khattab
 337-482-6685
khattab@louisiana.edu

Associate Dean
 Dr. Burke Huner
 337-482-6565
burke.huner@louisiana.edu

Assistant Dean
 Corinne Dupuy
 337-482-1208
cdupuy@louisiana.edu

Assistant Dean for Industry Partnership
 William Chirdon
 337-482-6564
william.chirdon@louisiana.edu

Chemical Engineering
 Dr. Rafael Hernandez
 337-482-6562
rafael.hernandez@louisiana.edu

Civil Engineering
 Dr. Mohammad Jamal Khattak
 337-482-5356
mohammad.khattak@louisiana.edu

Electrical & Computer Engineering
 Dr. Magdy Bayoumi
 337-482-6568
magdy.bayoumi@louisiana.edu

Engineering Technology
 Dr. Shelton Houston
 337-482-6968
shelton.houston@louisiana.edu

Mechanical Engineering
 Alan Barhorst
 337-482-1763
alan.barhorst@louisiana.edu

Petroleum Engineering
 Dr. Rafael Hernandez
 337-482-6562
rafael.hernandez@louisiana.edu

Outreach Coordinator
 Robin Hayes
 337-482-5888
robin.hayes@louisiana.edu

Student Engagement Coordinator
 Sharon LaHood
 337-482-5186
sharon.lahood@louisiana.edu

Student Services Coordinator
 Rebecca Ashurst
 337-482-6685
rebecca.ashurst@louisiana.edu

Follow us on: Instagram, Facebook, LinkedIn, and Twitter.



COLLEGE OF LIBERAL ARTS

Our liberal arts program focuses on the most vital and productive component of humanity: the mind. Students develop a keen sense of critical analysis and reasoning, sound judgment, historical perspective, and the art of oral and written communication, which employers consider to be four of the most highly valued skills in today's job markets. The range of study in the liberal arts helps students develop a perspective on the past, an understanding of the present, and the flexibility to face the challenges of the future. An array of courses such as history, English, communication, behavioral sciences, and foreign languages await exploration. A broad-based liberal arts education, with its emphasis on learning how to learn and on creative problem solving, fully prepares students for a successful career and for life in a rapidly changing world.

HISTORY, AIMS AND OBJECTIVES

The College of Liberal Arts is the oldest college at the University of Louisiana at Lafayette. Created in 1921, the College was the first step in the academic restructuring of what was then Southwestern Louisiana Institute and encompassed all areas of instruction outside of teacher training. Today, the College consists of ten departments that offer 27 majors and concentrations in three broad areas of study: humanities, behavioral sciences and communication. Adhering to the principle that a solid foundation in the liberal arts leads to success in every area of life, the College has encouraged the development of programs that meet the needs and interests of all students. Thus, the more than 2,600 students enrolled in the College participate in an educationally broadening experience that fully prepares them to reach their individual goals, whether in the workplace or in professional or graduate study.

FACULTY

Faculty members bring extensive teaching experience and professional expertise to the classroom and provide all academic advising to students. Of the more than 150 full-time faculty, many have been recognized for nationally and internationally published research. In addition, the College has three endowed chairs that are used to support eminent scholars with distinguished research and teaching records, as well as 32 professorships endowed by individuals and businesses. These professorships are used to recruit and retain outstanding faculty members.



FACILITIES AND RESEARCH CENTERS

The College is housed in five buildings on campus: H.L. Griffin Hall, Burke-Hawthorne Hall, Mouton Hall, Rougeou Hall, and Girard Hall. Girard Hall, the oldest classroom building on campus, is the home of the Department of Psychology. Burke-Hawthorne, next to Cypress Lake, houses the Department of Communication and the Department of Communicative Disorders. Political Science, Sociology and Anthropology, and Human Development and Family Science are in Mouton Hall, one of the original buildings in the quadrangle. Criminal Justice shares space in Rougeou Hall. The College's largest classroom building, H.L. Griffin Hall, named for its first dean, houses the English Department and Moving Image Arts, the Department of Modern Languages, and the Department of History, Geography & Philosophy. The Dean's Office is also located in Griffin Hall.

Finally, the College has three research facilities. The Center for Louisiana Studies, located in the Roy House, provides scholars, students, and the public with a better understanding of Louisiana's history and culture through its planning, promotion, and pursuit of programs of acquisition, research, and publications. In addition, the Center houses the University of Louisiana Press.

The Guilbeau Center for Public History, housed in H.L. Griffin Hall, supports local, national, and international community-centered research projects through digital humanities technology, historical expertise and collaborative research opportunities. Current research projects include local and state history, women's history, environmental history, Indigenous history, Black history, the history of science, technology and medicine, and disability awareness. We also run the University's LGBTQ+ Archive.

Located in Dupré Library is the Ernest J. Gaines Center, an international venue for scholarship on Ernest Gaines, UL Lafayette's Writer-in-Residence Emeritus. The Center honors Gaines's oeuvre and provides a space for scholars and students to work with the Gaines's papers and manuscripts. Gaines's generous donation of his early papers and manuscripts (through 1983) and some artifacts to the University provided the foundation for the



Center's collection. The Center also anticipates acquiring the remainder of Gaines's papers, and the donation of extensive papers, manuscripts, and tape-recorded interviews of Gaines's scholars. The Center will eventually include all books, journal articles, essays, interviews, theses, and dissertations on Gaines and his work. In addition, it will include a complete collection of all the published translations of Gaines's writings. It will be the site of the only complete collection of Ernest Gaines scholarship in the world.

CAREER OPPORTUNITIES

Liberal Arts graduates enrich all professions with their highly developed skills in written and oral communications, critical thinking and creative problem solving. Numerous job opportunities exist in the fields of business, government, education, law, mass media and entertainment, and medicine and health services, to name only a few. The required minor studies area, as well as opportunities for internships in many of our major areas, further enhances opportunities for meaningful employment.

SCHOLARSHIPS

The College grants more than 50 scholarships to sophomores, juniors, and seniors. The University and the College provide scholarships during the freshman year.

STUDENT ORGANIZATIONS

The College offers more than 20 departmental and honorary organizations with which students can complement their studies. These organizations provide students the opportunity to meet other people and explore new avenues through professional and social activities, and community involvement.



MAJORS

Anthropology	Modern Languages
Criminal Justice	French & Francophone Studies
English	Spanish & Hispanic Studies
Creative Writing	Moving Image Arts
Folklore	Political Science
Linguistics	International Affairs
Literature	Pre-Law
Professional Writing	Psychology/Pre-Med Psychology
History	Sociology
Human Development & Family Science	Speech Pathology & Audiology
Mass Communication	Strategic Communication
Broadcasting	Advertising
Journalism	Leadership Communication
	Public Relations

Contact Information

Dr. Ani Kokobobo, Dean
337-482-6219
ani.kokobobo@louisiana.edu

Dr. Lucian Dinu, Head
Department of Communication
337-482-6103

Dr. Ryan Nelson, Head
Department of Communicative Disorders
337-482-6726

Dr. David Khey, Head
Department of Criminal Justice
337-482-6540

Dr. Leah Orr, Head
Department of English
337-482-6906

Dr. Michael Martin, Head
Department of History, Geography
& Philosophy
337-482-6900

Dr. Monica Wright, Head
Department of Modern Languages
337-482-6811

Mr. Virgile Bedok, Head
Moving Image Arts Program
337-482-5474

Dr. Beth Rauhaus, Head
Department of Political Science
337-482-6044

Dr. Amy Brown, Head
Department of Psychology
337-482-6597

Dr. David Yarbrough, Head
Department of Sociology, Anthropology &
Human Development & Family Science
337-482-6044
david.yarbrough@louisiana.edu



COLLEGE OF NURSING & HEALTH SCIENCES

BACHELOR OF SCIENCE IN NURSING

The first nursing students enrolled at UL Lafayette, then SLI, in September 1951. Of the 20 students who enrolled that first semester, six graduated in the first graduating class of 1955. Today, the LHC Group · Myers School of Nursing boasts an enrollment of more than 1,700 nursing students, graduates more than 300-400 nurses every academic year, and is one of the largest nursing programs in the country.

However, enrollment numbers alone do not tell the entire story about the nursing program at UL Lafayette. With quantity comes unparalleled quality. The Department's 39-year passage rate on the NCLEX-RN averages 95 percent for students who have graduated from the program. This exceptional pass rate is one of the highest in the country and far exceeds state and national pass rates on the NCLEX-RN for comparable programs. This reflects greatly on our students' academic abilities, clinical expertise, and commitment to learning. Undergraduate students are provided innovative learning opportunities to develop knowledge and skills in both institutional and community-based settings. The LHC Group · Myers School of Nursing was recently recognized by the National League for Nursing as a Center of Excellence for a four-year term.

BACHELOR OF HEALTH INFORMATION MANAGEMENT

Registered health information administrators do a lot more than maintain health records. They are trained to interpret data for patient care, assist clinicians with research, provide analytical data for top management, assure privacy and confidentiality of patient health information, and manage all types of health care facilities. These professionals play a crucial role in the healthcare field. This field may appeal to those who are excited about working in healthcare while making an attractive entry-level salary. The program is fully accredited by the Commission on Accreditation for Health Informatics and Information Management Education.

BACHELOR OF HEALTH SERVICES ADMINISTRATION

The online bachelor's degree in HSA provides graduates with opportunities in entry and mid-level management positions in the healthcare field. The curriculum includes a capstone course in which students complete an internship in a health care facility. Graduates are prepared for entry into master's degree programs in health services administration, health management, public health, public administration or business administration.

PRE-DENTAL HYGIENE

The college offers the opportunity to enroll in a pre-dental hygiene non-degree program designed for students who wish to complete the required coursework at UL Lafayette and then transfer to a bachelor of science degree program.

ADVISING PROCEDURES

Group advising sessions are offered during the fall and spring semesters for undergraduate nursing, health information management and health services administration students. Individual appointments are available year-round through the Nursing and Health Sciences Student Service Office.

Pre-dental hygiene students are advised through the Academic Success Center for pre-dental hygiene prerequisite courses.





SPECIAL FACILITIES

Nursing

The simulation program includes eight labs, which are equipped with a multitude of simulators ranging from low-fidelity task trainers to high-fidelity patient care simulators. Students also use virtual reality learning systems to develop high-level skills for today's complex health care environment. The Nursing Simulation Program was recently granted full reaccreditation by the Society for Simulation in Healthcare for a five-year period, joining a select group of programs across the world with this designation.

Health Information Management

The HIM program includes one computer lab and one population health analytics and decision support lab; both are equipped with state-of-the-art technology. The students are able to use virtual software to simulate healthcare experiences as well as analyze population health data.

SPECIAL PROGRAMS

We offer an RN to BSN program designed for and targeted to registered nurses (RNs) who have an associate degree. The completely online program provides a thorough education in professional nursing practice, leadership, research, and community-based care.

The LHC Group · Myers School of Nursing participates in the UL Lafayette Study Abroad summer program, offering exciting and cultural learning experiences.

The latest program offering is the Accelerated BSN Program through a partnership with Oschner Lafayette General. This 15-month program is designed for those who have earned a

bachelor's degree in any field and are interested in becoming a registered nurse.

APPLICATION PROCEDURE

Undergraduate nursing students are required to complete admission applications for the first clinical nursing course at the sophomore level.

CAREER OPPORTUNITIES

This is not only an exciting time to be in the healthcare profession, but also an opportunistic time. Because of the critical shortage of healthcare clinicians, managers, and educators, numerous employment options are available. The job market offers a wide variety of work settings, excellent salaries, and advancement opportunities for future nurses, nurse practitioners, health information administrators and health services managers.

STUDENT ORGANIZATIONS AND HONOR SOCIETIES

Sigma Theta Tau International Honor Society, Delta Eta Chapter
Health Information Management Society
UL Lafayette Student Nurses Association

MAJORS

Nursing
Health Information Management
Health Services Administration
Pre-Dental Hygiene (non-degree)
Master of Science in Nursing
Doctor of Nursing Practice



Contact Information

Dr. Lisa Broussard
Dean
337-482-5654
lisa.broussard@louisiana.edu

Dr. Deedra Harrington
Director, LHC Group · Myers School of Nursing
337-482-5612
deedra.harrington@louisiana.edu

Office of Nursing and Health Sciences
Student Services
337-482-5629
nursing_student_services@louisiana.edu

Dr. Jennifer Lemoine
Associate Dean
337-482-1029
jennifer.lemoine@louisiana.edu

Dr. Anita Hazelwood
Department Head, Health Sciences
337-482-6633
anita.hazelwood@louisiana.edu

Academic Success Center
Pre-Dental Hygiene
asc@louisiana.edu



RAY P. AUTHEMENT COLLEGE OF SCIENCES

Science has transformed the way in which modern people think. When individuals find problems in the physical world, they now turn to scientists to find solutions. As a result, the Ray P. Authement College of Sciences has adopted three interlocking endeavors – the advancement of scientific knowledge through research, the training of new scientists through quality undergraduate and graduate degree programs, and the aiding of the community through problem solving. Whether the problem deals with ecology, computer applications, energy needs, coastal restoration, terrorism, or a variety of other problems – our faculty strive to help the community through research. This research, coupled with stimulating coursework, enables faculty to mold today's students into tomorrow's scientists, and thereby help provide the community with future problem solvers.

The University of Louisiana at Lafayette has a long history of working with various science faculties and programs. The Ray P. Authement College of Sciences consists of four departments and two schools emphasizing both undergraduate and graduate research.

STUDY OPTIONS

The undergraduate degree programs not only provide a broad general education but also an intense concentration in a particular scientific discipline. In some cases, the curricula are structured to include the coursework necessary for admission to graduate or professional schools.

BIOLOGY

One of the strongest biology programs along the Gulf coast, the UL Lafayette Department of Biology provides students with outstanding coursework and research opportunities. The department plays a major role in preparing students for graduate school in the biological sciences or for professional graduate programs such as medicine, optometry, veterinary, and physical therapy.

CHEMISTRY

From the nuclear magnetic resonance spectrometer to the scanning tunneling microscope, the Department of Chemistry is filled with equipment and faculty interested in teaching you how to use it. Certified by the American Chemical Society, the department provides solid training for students. The department also houses the pre-pharmacy program.

COMPUTING AND INFORMATICS

No matter what interests you about computer science, if you're interested in making a career of it, the School of Computing and Informatics is here to make sure you get the best computer science education possible. Our fully qualified faculty will guide

you through our nationally accredited Computer Science curriculum. The only Informatics program in the state educates and trains students who could provide critical support for information systems and technologies in business, healthcare, digital media and systems administration. As you can imagine, our recent graduates are in great demand in fields such as banking and insurance, communications, and defense. Our graduates have been admitted to the top graduate programs in the country as well as our own nationally ranked Ph.D. program.

GEOSCIENCES

Exploration of natural resources and the impact of human activity on the environment are the main focus areas of the two programs housed in the School of Geosciences – Geology and Environmental Science. Like getting your hands dirty? From the rivers and deltas of South Louisiana to the rocky wilds of Wyoming and South Dakota, you'll have many opportunities to do just that on the many field experiences required by the Geology curriculum. Preparation is given in both petroleum geology and environmental geology. If you are a student in this program, you are likely to become "the talk of the town," as there are more than 600 geologists currently working in Lafayette. The Environmental Science degree is an interdisciplinary degree that focuses on the application of biological, chemical, and physical principles to the study of the physical environment and the solution of environmental problems. Students will learn to provide sensible mitigations of the many geohazards that humans face, such as the loss of vital coastal wetlands or increases in environmental pollution.





MATHEMATICS

What in the world can you do with a degree in mathematics? Graduates of this department have become teachers, actuaries, health management professionals, consultants in industry and government, and researchers. In the era of computers in kindergarten, the need for those with a firm grasp of the mathematical sciences is growing fast. Beginning with a handheld calculator, you will rapidly graduate to using the equipment in the department's three computer labs. The faculty will teach you the fine art of deductive reasoning and the language of mathematics – the language used by all the fields of science and technology. When you graduate with a degree in Mathematics, you'll be amazed at the number of doors that will open.

PHYSICS

From the study of astrophysics and planetary science to the applications of ion beam accelerators to the study of acoustics, the Department of Physics is nationally known. If you are interested in nature at its most fundamental level, you are interested in physics. Graduates of this program have become research scientists at NASA and the Navy Oceanographic Laboratories. They have become presidents of companies and high ranking-officers in the Air Force.

RESEARCH

Undergraduate students often work closely with faculty on funded research projects. The Ray P. Authement College of Sciences is associated with a number of research centers:

- Ecology Center
- Informatics Research Institute
- Institute for Coastal and Water Research
- Louisiana Accelerator Center
- Microscopy Center
- National Wetlands Research Center
- New Iberia Research Center

MAJORS AND CONCENTRATIONS

Biology
 Ecology, Evolution & Marine Biology
 Medical & Allied Health Science
 Microbiology
 Veterinary Bioscience

Chemistry
 ACS Certification
 Pre-pharmacy

Computer Science
 Cloud Computing
 Cybersecurity
 Computer Engineering
 Scientific Computing
 Video Game Design & Development

Environmental Science
 Digital Geography
 Environmental Quality
 Soil and Water

Geology
 Earth Sciences
 Environmental Geology
 Paleontology
 Energy Resources

Informatics
 Business Informatics
 Cybersecurity
 Health Informatics
 Individualized Informatics
 Interactive Media Technology
 Systems Administration

Mathematics

Physics
 Computer Science
 Geology & Geophysics
 Informatics
 Pre-allied Health
 Traditional Physics

Contact Information

Dr. Azmy Ackleh, Dean
 337-482-6986
sciences@louisiana.edu

Computer Science
 Ms. Nona Istre
 337-482-6768
nona@louisiana.edu

Informatics
 Mr. Brian West
 337-482-6768
brian.west@louisiana.edu

Biology
 Dr. Karen Smith
 337-482-6748
biology@louisiana.edu

Geology
 Dr. Brian Schubert
 337-482-6967
brian.schubert@louisiana.edu

Mathematics
 Dr. Bruce Wade
 337-482-6702
bruce.wade@louisiana.edu

Chemistry
 Dr. Wu Xu
 337-482-6734
wu.xu@louisiana.edu

Environmental Science
 Dr. Durga Poudel
 337-482-6647
envs@louisiana.edu

Physics
 Dr. Natalia Sidorovskaia
 337-482-6691
natalia.sidorovskaia@louisiana.edu



CAMPUS INVOLVEMENT

Helping you connect to your peers and the University

getinvolved.louisiana.edu

The University of Louisiana at Lafayette has 200-plus student organizations and a rich history of campus traditions. Getting involved in life outside the classroom is important to your academic and personal success.

WHY GET INVOLVED?

Make Friends That Will Last a Lifetime

Students who are successful at UL Lafayette have friends who support them when times get tough. When you get involved, you become part of a team of students who will help to ensure your success. You will also learn that students who are involved at UL Lafayette seem to be able to find a great balance between work and play while they improve the campus community.

LEADERSHIP TRAINING AND SKILL DEVELOPMENT

Many of the involvement opportunities on campus come with leadership training that will develop incredible transferable skills for your future endeavors. Some examples of training that have occurred in the past include diversity, public speaking, group facilitation, conflict mediation and team building. In addition, guest speakers have been brought in to motivate and inspire success in student leaders. Much of this training can be cited on your resume and during application processes.

HELP YOUR APPLICATION OR RÉSUMÉ STAND OUT

Your academic courses will lay the ground work to ensure that you have the technical skills and knowledge to proceed to your next endeavor. Employers, grad school selection committees and recruiters are all looking for people who not only have the knowledge, but who have practical experience that will encourage success beyond the classroom. Getting involved in campus life will enable you to build your leadership skills, practice problem solving, deal with difficult situations, manage people and learn how to work effectively in a team.

MAKE A DIFFERENCE

Students at UL Lafayette are passionate about making our world a better place. Whether it's improving the health and wellness of students at large, collecting clothes for a drop-in center or building a house, students at UL Lafayette are currently involved in countless projects that make our community stronger.

STUDENT ORGANIZATIONS

Student Organization Center

Student Union, Room 163

Being a member of a student organization enriches your years in college in many ways. The good friends and good times help transform what is sometimes a large, overwhelming institution into a place you can call "home." Student organizations also give you opportunities to explore new interests, develop skills, enhance your academic program and have an impact on the University community.

FINDING THE RIGHT GROUP. WHAT'S IMPORTANT TO ME?

Ask yourself these questions:

- What am I looking for in an organization?
- Do I primarily want to make new friends?
- Do I want to work on something I believe in?
- Do I want to explore something new?
- Should I be in a group that relates to my major/career choice?
- Do I want a break from my academics?
- Should I continue an interest from high school?
- Do I want to be of real service to the campus and community?
- Do I want to help make things happen?
- How much time do I have for an organization?
- Are there financial considerations?

WHAT KIND OF GROUPS ARE THERE?

UL Lafayette students are a diverse community of people, ideas and concerns. There are many organizations in each of the following categories:

- Departmental/academic
- Fraternity/sorority
- Governing
- Honorary
- International/cultural/ethnic
- Recreational sports
- Religious organizations
- Service organizations
- Special interest



HOW DO I TAKE THE PLUNGE?

Organizations are always looking to recruit new members. They are very eager to answer your questions and explain their activities and purposes.

Most groups have “mass meetings” at the beginning of each term. These are open to any interested student. You’re under no obligation to join the group if you attend – it’s simply a chance for you to get more information and for the group to learn of your interest.

If you miss a mass meeting or find out about a group during the year, you can use Campus Groups to contact the organization. Campus Groups is a great tool to find out more about organizations and events on campus. Log in with your ULID and password at ullafayette.campusgroups.com/login_only and browse organizations by name, keyword, or type. You can also browse a calendar of student organization events. If meeting times and programs are posted, you can always assume you’re welcome. Of course, some organizations, such as honoraries, fraternities, and sororities, have selected memberships, so be sure to find out the particulars in these cases.

Once you’ve joined an organization, be proactive. Introduce yourself to people, ask questions, express ideas and be sure to volunteer your time and energy. Engaging with people in the organization will help get you noticed and make the transition easier to feeling like a member.

STUDENT UNION

337-482-6400 | studentunion.louisiana.edu

The Student Union is the heart of our campus and is designed to engage our students daily. It serves as the central location for our students to hold organizational meetings/activities, shop and eat. It houses the Ragin’ Cajuns Store, Cypress Lake Dining Room, various dining areas such as Chick-fil-A, McAlister’s, Smoothie King, and Starbucks, as well as various University departments.

UNIVERSITY PROGRAM CENTER

Student Union, room 157

337-482-6945 | upc.louisiana.edu

The University Program Center is home to three programming boards. Board members are students who interview and are selected to produce student activities including entertainment, university traditions, and cultural events.

UPC creates the unforgettable moments of your Ragin’ Cajun experience such as homecoming, movie nights, comedians, Lagniappe Day, Krewe of Roux Mardi Gras, Silent Disco, and so much more.

All UPC sponsored events are free to all students with their Cajun Card.



CAMPUS TRADITIONS

SOUL CAMP

louisiana.edu/soulcamp

SOUL Camp is an extended orientation program offered to incoming students. The dates for 2025 are:

- SOUL Camp A: August 6-9, 2025
- SOUL Camp B: August 11-14, 2025



SOUL Camp provides students an opportunity to learn more about the spirit and tradition of UL Lafayette while also continuing to build friendships and leadership skills through community service and other activities.

SOUL is an acronym for Service, Outreach, Unity, and Leadership. During Camp, we focus on key transition issues: campus involvement, community involvement, University pride, career development, leadership skills, academic balance, time management, and diversity, inclusion, & multiculturalism. Along with easing the transition to UL Lafayette, SOUL Camp creates and prepares future student leaders at the University while sparking interest in ongoing campus & community engagement.

GET ON BOARD DAY

Your opportunity to join any of UL Lafayette's 200-plus student organizations. This event is held in the Quad during Cajun Craze in the fall, and again during the spring semester.

RAGIN' ROAR

Ragin' Roar is a pep rally held before the first home football game and has been a campus tradition for more than 40 years. Students are invited to show their spirit and pride in our team.

FRESHMAN FIRST DOWN

A day of food, fun, and football offered to our freshman class. New freshmen are invited to a free tailgating party on the first home football game of the year.

HOMECOMING

Homecoming is one of our most celebrated traditions. It is a time for students to come together, have fun, and celebrate their Ragin' Cajun spirit and pride. Events throughout the week include a fashion show, Cajuns Got Talent, Yell Like Hell Pep Rally, the NPHC Step Show, and more. We close the week with the presentation of the Homecoming Queen, King, and Court, and, of course, a WIN by our Ragin' Cajuns football team.





KREWE OF ROUX

The Krewe of Roux is UL Lafayette's own Mardi Gras krewe celebration. Each organization on campus will have the opportunity to participate in fun activities as well as nominate members to be king and queen of the Krewe of Roux. This tradition also includes a Mardi Gras ball for students with food, music, and dancing. The event takes place in the spring semester during Mardi Gras season.

LAGNIAPPE DAY

Lagniappe (LAHN-yahp) means "a little something extra" in Cajun French, and that is exactly what this event is all about. Every spring, Lagniappe Day is a little something extra for the students at UL Lafayette to celebrate the end of another school year. A day of events including an afternoon of games, music, canoe races in Cypress Lake, the annual Lake Jump and 20,000 pounds of boiled crawfish for the entire campus!

WALK OF HONOR

The Walk of Honor is a project of the Alumni Association that recognizes all graduates of the University. Each graduate's name is inscribed in a brick on the Walk of Honor. It is organized alphabetically by class year and it is extended with each graduating class.



RAGIN' CAJUNS ATHLETICS

ragincajuns.com

The University is home to the Louisiana Ragin' Cajuns, a member of the National Collegiate Athletic Association, competing at the highest level of intercollegiate athletics Division I. Louisiana sponsors eight men's sports (football, basketball, baseball, cross country, golf, tennis and indoor and outdoor track and field) and eight women's sports (soccer, volleyball, basketball, softball, cross country, tennis and indoor and outdoor track and field).

Students have **FREE admission** to all regular-season home sporting events across every sport. Tickets are mobile only and need to be downloaded to your phone's wallet - student IDs are not accepted. Want to bring a friend? Students can also purchase discounted guest tickets for ticketed sports.

To claim your tickets or purchase guest tickets:

1. **Visit** ragincajuns.com/tickets and select "Cajuns Account".
2. **Log in** to your school email.
3. **Navigate** to the "Tickets" or "Student Tickets" section.
4. **Select** the sporting event you want to attend.
5. **Follow** the on-screen instructions to claim or purchase your tickets.
6. **Download** and place your tickets in your phone's wallet.

At most home sporting events, there are various sponsored student contests and promotions that offer students the chance to win prizes. Be sure to also check out the updated student football tailgating area. It features music, food and one-of-a-kind Cajun hospitality. It's some of the best tailgating in the South and is a time-honored experience.



CAMPUS SERVICES

UNIVERSITY LIBRARY

library.louisiana.edu

Edith Garland Dupré Library
(337) 482-6025

Edith Garland Dupré Library is centrally located on campus and holds more than one million print and electronic titles. Research materials are available online, and research librarians assist students in person, by chat, text, or email. Computer labs and individual or group study spaces support academic achievement. The library also offers a variety of items and services to support individual interests and learning needs, as well as interlibrary loan of electronic articles. Special collections, including materials about the Acadiana region, provide unique materials for research. Jazzman's Café, located on the first floor, is a popular meeting place.

DEAN OF STUDENTS OFFICE

deanofstudents@louisiana.edu

Student Union, room 169
(337) 482-6276

Dr. Margarita Perez, Dean of Students

The Dean of Students Office is committed to students' "life outside the classroom" by providing programs and services that promote campus safety, health and wellness, student engagement, leadership and school spirit. The office is concerned for the general welfare of all students and supports them in reaching their academic and personal goals while enjoying the Ragin' Cajuns experience.

OFFICE OF STUDENT ENGAGEMENT AND LEADERSHIP

getinvolved.louisiana.edu

Student Union, room 162
(337) 482-6272

Heidie Lindsey, Director
getinvolved@louisiana.edu

Are you looking for something to get involved in at UL Lafayette? Do you want an experience to enhance your degree that makes you more marketable to employers?

The Office of Student Engagement and Leadership promotes the benefits of student involvement as an important part of the learning experience outside the classroom. Our office exists to engage students through activities, event planning and promotion, traditions,



workshops, retreats, and, of course, our 200-plus registered student organizations. From organizations related to academic majors to club sports to fraternities and sororities, we help students find a place to belong. We can help students start new organizations as well. Students can take part in planning some of the university's largest student events. We strive to provide a positive and welcoming experience that is inclusive to all students.

TRANSPORTATION SERVICES

louisiana.edu/park

Olivier Parking Tower, suite 100
(337) 482-6858

Stuart Glaeser, Director

Transportation Services provides parking for faculty and staff, and for residential or commuter students. Residence hall students who plan to have a vehicle on campus qualify to purchase permits online or at the Transportation Services Office prior to the first day of class each semester. Commuter students can purchase parking permits for a limited number of on-campus spaces. Students parking at Cajun Field must obtain a free parking permit through their parking account on ULink.

Visit louisiana.edu/park for parking regulations and other transit information. A live bus tracking app that provides route information for UL Lafayette Transit is available. View louisiana.edu/transit for details.



UNIVERSITY HOUSING

housing.louisiana.edu

Buchanan Hall, second floor

(337) 482-6471

oncampusliving@louisiana.edu

Living on campus provides a unique experience for our Ragin' Cajuns. Our residence halls include suite-style, junior suite-style, and traditional-style rooms. Our apartment complexes offer one-, two-, three-, and four-bedroom units as well as family housing. Our live-in Residential Life Staff are available 24/7 to our students through the halls' dedicated duty phone, and our campus is patrolled by our UL Police Department. On-campus housing includes the cost of the room, as well as electricity, water, laundry, internet, and cable. Living on campus provides the student with a first-row seat to all things available on campus and we cannot wait to welcome you home.

CAJUN CARD SERVICES

louisiana.edu/cajuncard

Student Union, room 134

(337) 851-2273

Cajun Card Services provides identification for all students and employees. The Cajun Card is your all-in-one ID card and your key to student life at UL Lafayette. It functions as your student ID card, library card, building and parking access card, meal card, and Cajun Cash card. Students and parents can deposit money onto the card that can later be used to make purchases at on- and off-campus locations using Cajun Cash. Please visit louisiana.edu/cajuncard for a list of locations that accept Cajun Cash.

Lost or stolen cards should be deactivated through ULink, on the Cajun Card website, or reported to the Cajun Card office. There is a \$25.00 replacement fee for lost or stolen cards. Office hours are Monday-Thursday 7:30 a.m. to 5 p.m. and Fridays from 7:30 a.m. to 12:30 p.m.

OFFICE FOR CAMPUS INCLUSION

louisiana.edu/inclusion

Martin Hall, room 243

(337) 482-6464

inclusion@louisiana.edu

The Office for Campus Inclusion has a gift for bringing people together—because we believe everyone benefits when people join together to learn, live, grow, and celebrate their differences. Committed to inclusion, access, opportunity, and success for all students, faculty, and staff on campus, the office engages in intentional programming, workshops, and collaborative partnerships that pursue inclusive excellence beyond the boundaries of comfort, promoting an environment where everyone feels they belong.

Regular events held by the Office for Campus Inclusion include the Project Allies Safe Zone Workshops, the Courageous Conversations speaker series, and the annual Women's Leadership Conference. The University is proud of its long and deliberate tradition of inclusion, one of the pillars upon which the institution rests. We welcome anyone who wants to join us in the continuous call to action to make our campus community a welcoming place for students, faculty, staff, and visitors.

DIVISION OF GLOBAL ENGAGEMENT

goglobal.louisiana.edu

Student Union, room 136

globalengagement@louisiana.edu

(337) 482-6819

studyabroad@louisiana.edu

(337) 482-5438

Dr. Gabriel Carranza, Executive Director

The Division of Global Engagement consists of the offices of International Affairs, Study Abroad, International Partnerships and Outreach, and aims to globalize education, research, and community engagement at the University. The Office of International Affairs serves more than 500 international students and scholars and provides cultural, academic, financial and immigration assistance as they adjust to life in the U.S. In addition, International Affairs is also responsible for international programs, F-1 and J-1 immigration advising and compliance, and the Intensive English Program. Study Abroad provides students an opportunity to earn course credit while studying outside the United States. Faculty-led programs are coordinated during the summer semester, including long-standing programs to Costa Rica; London, England; Paris, France; Florence, Italy; Cork, Ireland; and Seoul, South Korea. New destinations in 2025 include Barcelona, Spain, and Tokyo, Japan. The Division of Global Engagement also facilitates study abroad experiences through global partnerships.



OFFICE OF STUDENT RIGHTS AND RESPONSIBILITIES

studentrights.louisiana.edu

Student Union, room 169

Dean of Students Suite

(337) 482-6373

(337) 482-6447 (after hours Dean on Call)

Carl E. Tapo Sr., Director

The Office of Student Rights and Responsibilities initiates and implements disciplinary procedures in accordance with the Code of Student Conduct. The office cultivates the educational development of students by promoting behavior that fosters a safe and civil environment through active community participation. It aims to facilitate student learning and development regarding community standards by balancing individual and community rights. The office also assists to coordinate the Dean on Call program in which a dean from Student Affairs may be contacted 24/7 to assist students in need.

OFFICE OF CAREER SERVICES

louisiana.edu/career

Agnes Edwards Hall, room 104

(337) 482-1444

Kim Billeaudeau, Director

career@louisiana.edu

The Office of Career Services helps students and alumni prepare for and enter into the workplace. Our services include major and career exploration, career advising and planning, job search guidance, career development seminars, and special events to connect with companies such as career and internship fairs. Be sure to claim your Handshake profile in ULink for up-to-date job and internship opportunities and recruiting events.

Services offered at Career Services

- Career assessments
- Individual career meetings
- Online job listings in Handshake (part-time, full-time, co-op, internships, & summer)
- Career Closet
- On-campus interviews
- Career fairs
- Employer panels & seminars
- Résumé writing assistance
- Etiquette dinners

OFFICE OF DISABILITY SERVICES

louisiana.edu/disability

Agnes Edwards Hall, room 126

(337) 482-5252

Dr. Carol Landry, Director

The Office of Disability Services helps to eliminate barriers by providing services and accommodations for students with documented disabilities to guarantee their full participation in University life.

Services provided by ODS

- Special testing accommodation
- Priority scheduling
- Note-taking assistance
- Elevator access
- Sign Language Interpreters

Students needing assistance must register with the office and present an accommodation letter to faculty in order to receive academic accommodations.

OFFICE OF THE UNIVERSITY REGISTRAR

louisiana.edu/registrar

Martin Hall, room 171

(337) 482-6291

registrar@louisiana.edu

The Office of the University Registrar ensures the integrity, confidentiality, and security of all educational records by providing an array of services and information related to academic records, registration, enrollment and degree verifications, grade transcripts, and Commencement; and by interpreting and implementing the University's academic policies.

POST OFFICE

louisiana.edu/postoffice

Student Union

(337) 482-6113

UL Lafayette maintains a U.S. Postal Service contract station on campus. Mailboxes and parcel box services are available to all students, faculty, and staff of the University. All box rental fees and pertinent information are available online at louisiana.edu/postoffice. The Post Office offers services such as the purchase of stamps, money orders, express and priority mail, certified mail and package and flat rate mailing.



STUDENT SUPPORT SERVICES

studentsupport.louisiana.edu

**Dr. Kim Warren, Associate Director of
On-Campus Programs and SSS Director
SSS-Regular & SSS-Stem,**

**Temporary Location: 601 St. Mary Street, 3rd floor
SSS-Disability, Agnes Edwards Hall, room 122
SSS-Teacher Prep, Girard Hall, room 101B
SSS Veterans, Agnes Edwards Hall, room M171
(337) 482-6828**

warren@louisiana.edu

The Student Support Services (SSS) Program provides opportunities for academic development, assists students with college requirements, and serves to motivate students toward the successful completion of their postsecondary education.

The goal of SSS is to increase the academic standing, college retention and graduation rates of its participants and to help students make the transition from one level of higher education to the next.

Eligibility requires at least one of the following: first-generation college student, Pell Grant eligible, or student with documented disability. U.S. Military Veterans interested in SSS must also meet one of the above criteria.

Currently there are five (5) SSS Programs:

- SSS-Disability
- SSS-Regular
- SSS-STEM/LS LAMP
- SSS-Teacher Prep
- SSS-Veterans



RAGIN' CAJUNS STORE

RaginCajunsStore.com

**Student Union | Heritage - 110 E. Lewis St., Building 5
Union - (337) 482-1322**

Heritage - (337) 482-6930

With multiple campus locations, Ragin' Cajuns Store is your source for textbooks, school supplies, and Ragin' Cajuns gifts and gear. One-stop convenience is the hallmark of the Ragin' Cajuns Store.

Having the right materials at the right time and at the right price can contribute to a student's success. At Ragin' Cajuns Store, students will find a variety of educational materials and services to assist in their academic success. Required and recommended new, used, rentable, and digital textbooks are available in the store and online. Course packs, general reference, and study materials are also available. Online ordering is available for textbooks with the choice of shipping or convenient in-store pickup. In addition to textbooks, you'll also find a large assortment of school, office, art, architecture, nursing, and engineering supplies. We also offer a textbook price match and buyback program.

Looking for something special to show off your Ragin' Cajuns spirit? Browse through the largest collection of officially licensed Ragin' Cajuns merchandise in town at Ragin' Cajuns Store. We have apparel and gifts for any occasion. You can also visit our website, RaginCajunsStore.com, for an even larger selection including online-only items! While you're there, you can join our mailing list to stay on top of all our exclusive promotions.

A portion of your Ragin' Cajuns Store purchase goes right back to the University to help support everything that makes our campus special. We know you have many choices when choosing where to shop. Thank you for choosing your on-campus bookstore and supporting student jobs and our local economy.





STUDENT HEALTH & WELLNESS

The health and well-being of our students is important to all of us.

STUDENT HEALTH SERVICES

louisiana.edu/studenthealth

Saucier Wellness Center

O.K. Allen Hall

(337) 482-5464 (Nurse)

(337) 482-1293 (Appointments)

Chris S. Hayes, MD, Director

Student Health Services strives to provide quality, accessible, cost-sensitive primary medical care and active health promotion to students. SHS is located in Saucier Wellness Center. Students should call early to make an appointment. Limited same-day appointments are available.

Student health records are kept separate from academic records and are maintained through the Student Health Services electronic health record system, Mediat. A confidential healthcare portal is available to patients through Mediat. The Mediat Patient Portal can be accessed by going to the University website and logging into ULINK. The Mediat Patient Portal can be accessed through ULink on the Health & Wellness card or by visiting ull.mediatconnect.com. The web-based portal allows students to access information, communicate with healthcare providers using secure messaging, and upload healthcare forms.

Students taking a total of 6 or more credit hours during fall/spring semester or 3 or more hours in the summer are eligible to receive care at SHS. Students not meeting these credit hour requirements can purchase a membership by visiting our office.

Services provided by SHS to students who have paid the membership fee include:

- Office visits at no additional charge for:
 - Assessments for illness or minor injuries
 - General physicals
 - Management of stable chronic medical illness
 - Referrals for serious illness or injury
- Laboratory work, office procedures, Pap smears, IV therapy, injections and prescriptions are all billable procedures and will incur a charge.

Services not provided by SHS:

- Management of unstable chronic illnesses
- Evaluation and treatment of injuries sustained as a result of a motor vehicle accident or work-related accident
- X-rays – Our providers will write orders to have them done elsewhere when they are necessary
- Obstetrical care
- Dental care

Student Insurance

View all plans at the SHS website. All registered UL Lafayette students are eligible for insurance coverage.

All domestic undergraduate students taking 7 hours or more in fall/spring and 4 hours or more in summer and all domestic graduate students taking 6 hours or more in fall/spring or 3 hours or more in summer are assessed a fee at registration and are enrolled in an Accidental-Only Plan when fees are paid. This student insurance will supplement any other insurance the student may have (except Medicaid/Tricare). It covers accidental injuries only and does not pay benefits for illnesses unrelated to accidents.

A more-comprehensive Accidental/Illness Plan meeting the requirements of the Affordable Care Act (ACA) is recommended for every student. Coverage may be obtained in two ways:

- It may be purchased privately from the insurance vendor of the student's choice, or
- It may be obtained through the federal healthcare exchange at healthcare.gov

All international students are required to have insurance coverage. International students are assessed a fee at registration that pays for an Insurance Plan that meets the requirements of the ACA.

COUNSELING & TESTING CENTER

counselingandtesting.louisiana.edu

Saucier Wellness Center

O.K. Allen Hall

(337) 482-6480 (Information & Appointments)

Dr. Brian Frederick, Director

The Counseling and Testing Center provides professional, personal counseling for students who may need assistance in dealing with a variety of concerns such as stress, relationship problems, grief, or adjusting to college life. Short-term individual, couple, family, and group therapy sessions are offered free-of-charge.

Additionally, the center offers proctored testing services for nationally based examinations and institutional examinations (computer-based and paper-based) for UL Lafayette students, faculty, and the community. Examinations administered at the testing center include independent study, certification examinations, the Praxis Series and others. For more information on testing services, including exams offered and testing fees, visit counselingandtesting.louisiana.edu.



24/7 counseling is available through the University's partnership with UWill, a free virtual mental health support service for students. It is available 24 hours a day, every day, and offers on-demand access to resources, counseling sessions and a crisis line that allows students to speak immediately with a mental health professional. Sign up at uwill.com with university email address.

The Counseling and Testing Center also has an unlimited site license for QPR Suicide Prevention Gatekeeper Training. To access the training, follow the instructions to create an account online via the following steps to take the training online using the following instructions:

- qprtraining.com/setup
- Enter the organization code "UOLL"
- Select "Create Account"
- Complete and submit registration form
- QPR will display and email the newly created username and password.
- Log in to begin training at qprtraining.com

RECREATIONAL SPORTS

recsports.louisiana.edu

Bourgeois Hall (337) 482-6159

The Department of Recreational Sports offers a wide variety of programs for students, faculty, and staff of UL Lafayette. Located at Bourgeois Hall, there are plenty of programs and services for all types of recreation. The 20,000 square foot Student Fitness Center includes cardio machines, weight machines, free weights, and a 2-story climbing wall. Bourgeois Hall has 4 basketball courts, 8 racquetball courts, a four-lane elevated track surrounding the basketball courts, and multiple studios and fitness rooms. Outdoor spaces include 10 tennis courts, 4 pickleball courts, fields and a walking track around Bourgeois Park, and the Intramural Sports Complex with 2 artificial turf playing fields. The Student Aquatics Center has an 8-lane, 25-yard lap pool, a resort-style leisure pool with a lazy river and beach entry, and a sand volleyball court.



As the largest employer of students on campus, our student-led programs are sure to offer something for everyone. Intramural Sports leagues and tournaments offer students the chance to compete with fellow UL Lafayette students, while Club Sports offer a higher level of competition and the chance to travel

to other institutions for games. Our fitness programs include free Group Ex classes throughout the week and personal training to focus on individual goals and overall health. Information and updates can be found at recsports.louisiana.edu.

STUDENT CASHIER CENTER

louisiana.edu/studentcashier

Student Union, room 135 (337) 482-6385

The Student Cashier Center is open for the payment of fees, room and board, and other assessed charges. Checks, cash, money order, or cashier's checks are accepted as forms of payment in person. Students may also pay fees online via ULink.

UL Lafayette also offers Direct Deposit for refunds of scholarships, financial aid, stipends, and registration or housing refunds. To take advantage of Direct Deposit, visit the Student Cashier Center's website at louisiana.edu/studentcashier/student-disbursements/direct-deposit. You will need a letter from your banking institution or a voided check, your ULID (Cajun Card), and the Student Cashier Center's direct deposit form, which can be found on the website.



SGA CHILD DEVELOPMENT CENTER

louisiana.edu/childdev

160 E. Lewis St. (337) 482-5739

Susan Arceneaux, Director

The mission of the Child Development Center is to provide a quality, professional environment for the nurturing, care, and development of preschool children of the University community. The University, in conjunction with the Student Government Association, operates the high-quality, state licensed Child Development Center on campus.



FINANCIAL AID & SCHOLARSHIPS

The UL Lafayette school code for federal financial aid is: **002031**

STUDENT FINANCIAL AID

louisiana.edu/financialaid

Temporary Location: 601 W. St. Mary, 5th Floor

(337) 482-6506, Option '0'

fnaid@louisiana.edu

Cindy Perez, Director

The Office of Student Financial Aid administers the Louisiana TOPS program, as well as all federal and state financial aid programs.

TOPS

mylosfa.la.gov

TOPS is a state scholarship for Louisiana residents based on high school academic performance. To apply, you must complete the Free Application for Federal Student Aid (FAFSA) at fafsa.gov by July 1 each year. ACT scores and high school transcripts for Louisiana residents must be released to the Louisiana Office of Student Financial Assistance (LOSFA) to determine TOPS eligibility.

LOSFA will notify you of your eligibility by email and through an online portal. To receive and maintain TOPS awards, you must adhere to the following rules:

- Enroll as a full-time student and be registered full-time on the 15th class day each fall and spring semester.
- Pass at least 24 credit hours during each academic year (August-August). Hours earned for advanced placement, and dual enrollment do not count.
- Earn a cumulative GPA of 2.00 at the end of every fall semester.
- Earn the required cumulative GPA for your TOPS award at the end of each spring semester:
 - **OPPORTUNITY AWARD:** 2.3 GPA first academic year; 2.5 GPA each subsequent year
 - **PERFORMANCE and HONORS:** 3.0 GPA each academic year

Each semester, classes can be reserved for TOPS eligible students who are registered full time. Students who have been deemed TOPS eligible by LOSFA will be able to see their TOPS amount on their Statement of Account as anticipated aid. Anticipated aid is a memo entry for the dollar amount of your TOPS award. Our office will bill LOSFA for your TOPS award after the 14th class

day. Actual TOPS funds usually post to the student's Statement of Account by mid-semester.

Contact Information:

LOSFA

1-800-259-5626 ext. 1012

custserv@osfa.la.gov

mylosfa.la.gov

FEDERAL & STATE FINANCIAL AID

The Financial Aid Office handles federal and state aid including grants, loans, and work-study. To apply, you must complete the Free Application for Federal Student Aid each school year at fafsa.gov and indicate UL Lafayette as one of your schools (Code: 002031). Suggested deadline for priority consideration is March 1.

Once your FAFSA is received at UL Lafayette and you have been admitted, these are the next steps:

- Check ULink to view required documents.
- You must submit all requested documentation to the Financial Aid Office for review.
- Documentation is reviewed, award is determined, and you are notified by email to check ULink to view, accept, decline or reduce your award(s).
- You will be awarded a loan. If you choose to accept the loan, you must complete Entrance Counseling and sign the Master Promissory Note at studentloans.gov.
- A tuition deferment will be automatically posted if the student's accepted resources equal 25% of their outstanding tuition and fees. This tuition deferment will reserve your class schedule.

Payment of Financial Aid:

- Financial aid funds are posted to your Statement of Account as they are received. Authorized money on your account means the disbursement day has not yet arrived, but you have done everything you need to do in order to receive those funds.
- If you will have an excess of funds after your Statement of Account balance is paid in full, a refund check/direct deposit will be issued.



- If your refund check/direct deposit is delayed you may be considered for a “Short Term Loan” to assist with books. Information on short term loans will be made available before each semester begins.

Academic Requirements:

- You must maintain a 2.0 cumulative GPA, and
- You must earn 67 percent of the hours you register for each semester.
- If requirements are not met, you will be placed on financial aid warning for the following semester and are given another chance to meet the requirements. You are eligible to receive financial aid while on warning.
- If requirements are not met after the second chance you will be placed on financial aid suspension. You are not eligible for financial aid while on suspension.
- Appeal procedures will be available on ULink.

VETERAN & MILITARY STUDENT SERVICES

louisiana.edu/veterans

Agnes Edwards Hall, room M-160

337-482-5206

veterans@louisiana.edu

The Office of Veteran & Military Student Services assists current and former service members as well as dependents who are receiving military education benefits. Please visit the website or contact the office for more information.

**SCHOLARSHIPS**

louisiana.edu/scholarship

Scholarship Office

Martin Hall, room 260

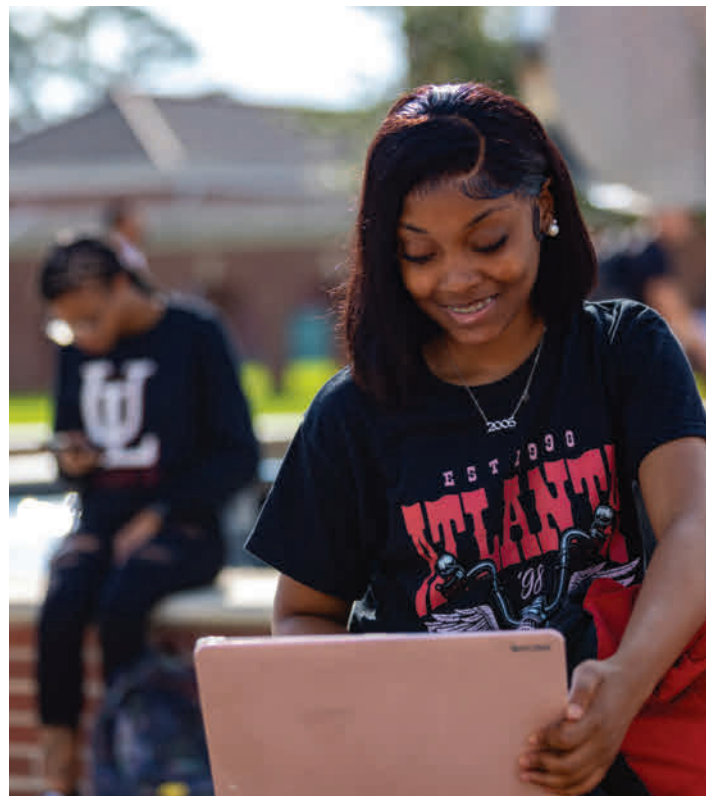
337-482-6515

scholars@louisiana.edu

The Scholarship Office provides academic scholarships to students at the University. This office handles all incoming freshman scholarships that are awarded to students when they are seniors in high school. Academic scholarships for out-of-state students, international students, and transfer students are also awarded in the Scholarship Office.

The office is responsible for processing scholarships that students have been awarded from outside sources, such as local churches, civic organizations, and others. If you are receiving such a scholarship, please contact the Scholarship Office for processing.

UL Lafayette Foundation scholarships are awarded and processed by the Scholarship Office. These scholarships are generally awarded by major or college as students progress in their studies. Each college and/or department has a faculty member who is the scholarship coordinator for that area. Visit your college's website for contact information.





YOUR CAJUN CARD FUNCTIONS AS:

- Student ID
- Library card
- Access or admittance to campus buildings and assigned parking lots
- Admission to campus activities and events
- Meal plan card with declining balance
- Cajun Cash card (on- and off-campus purchases)

YOUR CARD RESPONSIBILITY AND FEES:

- It is required that you carry your Cajun Card on you at all times.
- The replacement fee is \$25 for lost or stolen cards (only first Cajun Card is free)
- Once you receive a replacement card, your old card is automatically deactivated.
- Lost or stolen cards should be reported immediately to our office. You can call during office hours to deactivate your card or deactivate it online at our website.

YOUR CAJUN CASH PURCHASES:

- Cajun Cash is a voluntary account, in which you may deposit money onto your card to make purchases where “Cajun Cash” is accepted. Your Cajun Card works like a debit card account. Cajun Cash balances roll over from semester to semester and you can deposit or spend money any time during the year.
- Cajun Cash deposits can be made on our website: louisiana.edu/cajuncard, in the Cajun Card Office, by calling 337-851-2273, or by mailing a check to P.O. Box 43615, Lafayette, LA 70504.
- Cajun Cash balances can be checked through ULink, the Cajun Card website, or in the Cajun Card Office.
- On-campus locations accepting Cajun Cash include: The Ragin’ Cajuns Store, Office of Transportation Services,

Student Health Services, printing, Coca-Cola machines, Dupré Library, and all campus dining areas.

- Off-campus locations accepting Cajun Cash include Subway, Campus Grounds, and McDonald’s. (locations subject to change, please check our website).
- Cajun Cash refunds are not issued unless you withdraw, resign, or graduate from the University. To receive a Cajun Cash refund, please fill out the refund form on our website.

CAJUN CARD FREQUENTLY ASKED QUESTIONS

Do I have to get a new ID every semester?

No, your student ID is good as long as you are a registered student with the University. However, if the Cajun Card Office changes the card in any form, you will be notified to receive a new one at no charge.

If my card gets damaged or does not work, do I have to pay for another card?

If the card has normal wear and tear, the office will replace the card for free. Damaged cards will be assessed at the office, in which management will determine whether or not you will be charged the \$25 replacement fee. If your card does not work, either a new card will be printed at no charge, or the problem will be corrected within our office.

Can I get cash back on my card when making a purchase?

No, currently all money put on your card goes directly toward your purchases.

Where are you located and what are your hours?

We’re located in the Student Union, room 134. Our hours are Monday – Thursday, 7:30 a.m. to 5 p.m. and Friday, 7:30 a.m. to 12:30 p.m.





The Student Union offers students a large variety of dining options.

CAMPUS DINING

UL Lafayette Dining Services offers many dining options for the campus community. Regardless of your tastes or appetite, we offer an array of foods and indulgences guaranteed to please anyone's palate.

For hours and meal plan rates, visit dining.louisiana.edu. Follow us on Facebook: [ullafayettedining](https://www.facebook.com/ullafayettedining) and Instagram: [dine_ul](https://www.instagram.com/dine_ul)

STUDENT UNION FOOD OUTLETS

Cypress Lake Dining Room

Cypress Lake Dining Room, located on the second floor of the Student Union, serves a variety of meals including homestyle dishes, pizza, burgers, soups, salad bar, a delicious dessert menu, and more.

Chick-fil-A

Chick-fil-A is located on the first floor of the Student Union. Order in the store or ahead to enjoy juicy chicken, entrees, waffle potato fries™, salads, treats, and more.

Starbucks

Starbucks is located on the first floor of the Student Union. Their mission is to inspire and nurture the human spirit – one person, one cup, and one neighborhood at a time. Today, with more than 18,000 stores in 62 countries, Starbucks is the premier roaster and retailer of specialty coffee in the world. With every cup, they strive to bring both our heritage and an exceptional experience to life.

McAlister's Deli

McAlister's Deli is located on the first floor of the Student Union and proudly offers handcrafted food and iced teas that are always made-to-order using the finest, freshest ingredients.

Smoothie King

Every blend at Smoothie King is crafted to help you achieve your health and fitness goals and Rule The Day. Fuel your body with whole fruits and organic veggies, and never any syrups or artificial colors, flavors or preservatives. Smoothie King can be found on the first floor of the Student Union and at the Rec Center.

Café Fleur de Lis

Café Fleur de Lis is located near Legacy Park and the surrounding resident housing facilities. Café Fleur de Lis is home to Lagniappe Café a Cajun inspired restaurant that offers homestyle meals. The delicious daily plate lunch will make you feel right at home. Zeus and Agave are also located inside Café Fleur de Lis.

Ragin' Cajun Food Court

The Ragin' Cajun Food Court is located inside Agnes Edwards Hall. Savor the tastes of Viva La Waffle, Simply-to-Go, Pizza Hut Express, Hissho Sushi, and Lagniappe Café. Mr. Beast Burger, Pardon My Cheesesteak, and Buddy V's can be purchased on the Grubhub app or at the kiosk in the Ragin' Cajun Food Court.

Jazzman's Café & Bakery

Located on the first floor of Dupré Library.





HOW TO PARK SMART ON CAMPUS

louisiana.edu/park

Parking Tips

- Getting a permit takes two steps: 1) register your vehicle to your account; and 2) purchase your permit.
- Park at Cajun Field for free and take the transit shuttle to main campus. Get the required free parking permit for Cajun Field through your parking account.
- A permit is required to park on campus during the day and during the evening.
- If you live in a residence hall, you must purchase a permit for your vehicle every semester.
- Citations may be appealed within 4 days via your ULink account. Click “Access My Parking Account” on the Parking & Transportation card and follow the instructions.

Parking permits are typically available for purchase beginning August 1 for the fall semester, December 1 for the spring semester, and May 1 for the summer.

Hourly Parking

Commuter students have several options for hourly parking on and near campus. The Girard Park Circle Parking Garage has hourly parking options on floors 1 - 3. Payment may be made by debit or credit card through the ParkMobile app. Additional hourly parking locations are located at 119 West St. Mary Street, 101 Mildred Street and 498 Brook Ave. Payment for parking in these lots is made through the ParkMobile app. For more information about ParkMobile, go to louisiana.edu/park.

Parking Violations

Students who do not follow parking regulations may be ticketed. The Traffic Code may be found at louisiana.edu/park. The following offenses may get your vehicle towed or booted:

- Parking in a handicap zone without proper credentials from the state of Louisiana (\$300 fine and/or be immobilized and towed)
- The business day following the issuance of the third unpaid university parking citation.
- Parking on the grass
- Blocking a vehicle/driveway/dumpster/handicap parking space
- Parking in a reserved space

Parking tickets may be paid online or in person at the Transportation Services Office (Olivier Parking Garage, 619 McKinley St., suite 100). Appeals are done only online, through your ULink account. Appeals must be filed within 96 hours, or four class days, of the alleged violation. The results of the appeal will be sent to your University email account within two weeks.

Transit & Shuttle Information

Students are encouraged to use the free campus transit system. Commuter buses run a continuous loop between Cajun Field, Bourgeois Hall, and the main campus. A campus shuttle runs a continuous loop with stops at the Health Sciences campus, the Student Union, Rex Street, Legacy Apartments, Cajun Village Apartments and The Heritage Apartments. A live bus tracking app that provides route information for UL Lafayette Transit is available. View louisiana.edu/transit for details.



TECHNOLOGY 101

As a student at UL Lafayette, you will find technology integration in just about every course we offer. As a student, you have access to the University computing resources that will assist you in your academic pursuits.

When you become a member of the UL Lafayette campus community, you are issued a ULID. The University ULIDs are maintained by University Computing Services and are used to access various resources on campus such as the wireless network (GeauxWiFi), STEP Lab computers, ULink, Email and Moodle.

ULIDs remain active for access to only ULink after you are no longer affiliated with the University. Once you leave the University you will maintain access to ULink, but lose access to other University resources such as Email and Moodle.

You should protect your password as you would your Social Security number to guard against identity theft. If you've forgotten your password, there is no need to worry. Passwords may be changed online at servicedesk.louisiana.edu/password. At Orientation, you may regenerate your password during program check-in.

University Email

Your University email account is established at the time of your ULID activation. Your University email is now part of your primary contact information, which you must keep current with the University Registrar's office. Students should check this email regularly for important University notices and other information. In addition to your primary email account, all students are issued the alias of `firstname.lastname#@louisiana.edu`. Your `ULID@louisiana.edu` and password are used to access your Email.

You can choose to configure your mobile device to receive your University email. See servicedesk.louisiana.edu/email for more information about the features available with your University email account.

University Portal

The University's web portal provides online access to useful University resources.

- Register for classes
- Access financial aid
- View online schedule of classes





- View your registration appointment
- View your class and finals schedule
- Access tutoring services
- View your tuition and fee bill
- Estimate your GPA
- View your unofficial transcript
- View your holds, if any (holds may prevent registration)
- Leave yourself notes and bookmark web pages
- Access your University email
- Submit address changes

You can access the University portal, ulink.louisiana.edu, using your ULID.

Moodle

Moodle (moodle.louisiana.edu) is the University's online learning management system. It is a special area on the web where you can access materials for a particular course — as long as your instructor chooses to utilize Moodle. Instructors are not required

to open courses to students until the first day of class. Moodle allows you to access course materials, exchange files, participate in class discussions, send email to members of the class, and take online quizzes/surveys. Your ULID and password are used to access Moodle.

STEP - Student Technology Enhancement Program

The Student Technology Enhancement Program, or STEP, maintains technological resources for the benefit of students. STEP maintains SMART classrooms and open-use labs throughout campus along with the accompanying software. STEP funds various grants in order to keep this campus technologically updated and efficient. The Office of STEP Services (OSS) offers grant proposal assistance that includes proofreading, checking for correct formatting, and assuring that grant qualifications are met. STEP grants provide current and sophisticated technology for students to utilize. OSS is also responsible for the management of digital signage throughout campus.

For an up-to-date listing of open-use STEP labs, visit step.louisiana.edu/step-labs.

Office of STEP Support
step.louisiana.edu
step@louisiana.edu





IT Service Desk

University Computing Support Services maintains and provides support for many academic computing resources.

The University's IT Service Desk is your source of support for your ULID, University email, wireless access, STEP labs, and other academic computing resources provided by the University.

The IT Service Desk is located in Stephens Hall, room 110. Answers to many of your questions may be found on the IT Service Desk website.

IT Service Desk
Stephens Hall, room 110
337-482-HELP (4357)
ithelp@louisiana.edu
servicedesk.louisiana.edu



POLICE DEPARTMENT

THE UL LAFAYETTE POLICE DEPARTMENT (UP) police.louisiana.edu 337-482-6447

UP maintains a close working relationship with area law enforcement agencies, criminal justice components, and all University administrative departments. The UP is located at the center of campus and our officers maintain 24-hour patrol coverage on foot or in motor vehicles. They respond to crimes, illnesses, fires, service calls, traffic accidents and other emergencies.

Environmental Health & Safety/Risk Management

The Office of Environmental Health (safety.louisiana.edu) manages the UL Lafayette Emergency Notification System (ENS), oversees our hurricane preparedness and response, and informs the campus community of health issues.

The Office of Environmental Health and Safety/Risk Management works to reduce accidents, hazards, and risk exposure by:

- Assigning various safety responsibilities throughout the campus
- Inspecting and maintaining facility building safety systems
- Conducting safety meetings and sending brief health and safety publications to campus personnel to increase awareness and remedy unsafe conditions
- Providing safety training to educate people on all issues related to safety
- Maintaining the All Hazards Plan for emergency management operations

All students are encouraged to register and update their cell phone number with the university's Emergency Notification System (ENS). This system will alert students, faculty, and staff of steps to take in case of a campus emergency.

Log onto ULink and visit the Safety and Emergency Notification card within the Campus Services tab to view and update your ENS information.

Clery Compliance

The University's Clery Compliance Coordinator's responsibilities include:

- Collecting, properly classifying, and counting crime statistics based on Clery geography
- Reviewing each call for service and campus security authority report for ongoing disclosures (including timely warning notices, immediate notification, and a crime/fire log)
- Identifying campus security authorities and training for all
- Preparing and complying with the required policy statements
- Creating memorandums of understanding and collecting crime statistics from all local law enforcement in the four parishes where the University owns or controls property
- Developing and distributing the annual security report;
- Maintaining an ongoing collection of crime statistics involving University students' travel
- Testing emergency response and evacuation procedures
- Providing audit trails and associated documentation to adequately demonstrate compliance

Campus Crime Statistics

The University of Louisiana at Lafayette's annual security report includes statistics for the previous three years concerning reported crimes that occurred on campus, in certain off-campus buildings or property owned or controlled by the University of Louisiana at Lafayette and on public property within, or immediately adjacent to and accessible from the campus. The report also includes institutional policies concerning campus security, such as policies concerning alcohol and drug use, crime prevention, the reporting of crimes, sexual assault and other matters. You can obtain a copy of this report by contacting the University of Louisiana at Lafayette Police Department at (337) 482-6447 or by visiting police.louisiana.edu/jeanne-clery-act/annual-reports.

Stay Informed

Share the following information with those close to you, and know how to stay informed about changing information in the case of a campus emergency:

Campus Emergency Hotline: 337-482-2222
Online: louisiana.edu or safety.louisiana.edu
University Police: 337-482-6447 or 911



CAMPUS DIRECTORY

ACADEMIC COLLEGES

College of the Arts

(337) 482-6224

arts@louisiana.edu

B.I. Moody III College of Business

Administration

(337) 482-6491

studentservices@louisiana.edu

College of Education &

Human Development

(337) 482-6681

education@louisiana.edu

College of Engineering

(337) 482-6685

engineering@louisiana.edu

College of Liberal Arts

(337) 482-6219

cola@louisiana.edu

College of Nursing & Health Sciences

(337) 482-5604

nursing_student_services@louisiana.edu

Ray P. Authement College of Sciences

(337) 482-6986

sciences@louisiana.edu

University College

(337) 482-6829

universitycollege@louisiana.edu

CAMPUS SERVICES

Academic Success Center

(337) 482-6818

success@louisiana.edu

Admissions

(337) 482-6467

admissions@louisiana.edu

Cajun Card Services

(337) 851-2273

cajuncash@louisiana.edu

Campus Inclusion

(337) 482-6464

inclusion@louisiana.edu

Career Services

(337) 482-1444

careerservices@louisiana.edu

Counseling & Testing Center

(337) 482-6480

counseling@louisiana.edu or

testing@louisiana.edu

Dean of Students

(337) 482-6276

deanofstudents@louisiana.edu

Dining Services

(337) 482-6179

Disability Services

(337) 482-5252

ods@louisiana.edu

Division of Global Engagement

(337) 482-6819

globalengagement@louisiana.edu

Financial Aid

(337) 482-6506, Option "0"

finaid@louisiana.edu

First Year Experience

(337) 482-6599

ofye@louisiana.edu

Honors Program

(337) 482-6700

honors@louisiana.edu

Housing

(337) 482-6471

oncampusliving@louisiana.edu

IT Service Desk

(337) 482-4357

ithelp@louisiana.edu

The Learning Center

(337) 482-6583

tlc@louisiana.edu

Library

(337) 482-6025

duprelibrary@louisiana.edu

Orientation

(337) 482-1391

orientation@louisiana.edu

Post Office

(337) 482-6113

Ragin' Cajuns Athletics

(337) 482-5393

Ragin' Cajuns Store

(337) 482-1322

Recreational Sports

(337) 482-6159

Registrar

(337) 482-6291

our@louisiana.edu

Scholarships

(337) 482-6515

scholars@louisiana.edu

SGA Child Development Center

(337) 482-5739

childdevelopmentcenter@louisiana.edu

Student Cashier Center

(337) 482-6385

bursar@louisiana.edu

Student Engagement and Leadership

(337) 482-6272

getinvolved@louisiana.edu

Student Health Services

(337) 482-1293

shs@louisiana.edu

Student Rights and Responsibilities

(337) 482-6373

srr@louisiana.edu

Student Support Services

(337) 482-6828

Transportation Services

(337) 482-6858

parking@louisiana.edu

University Police

(337) 482-6447

Veteran & Military Student Services

(337) 482-5206

veterans@louisiana.edu

Writing Lab

(337) 482-5224

writinglab@louisiana.edu