

Race and Gynecology:

How It Impacts Black Women in
Louisiana

+

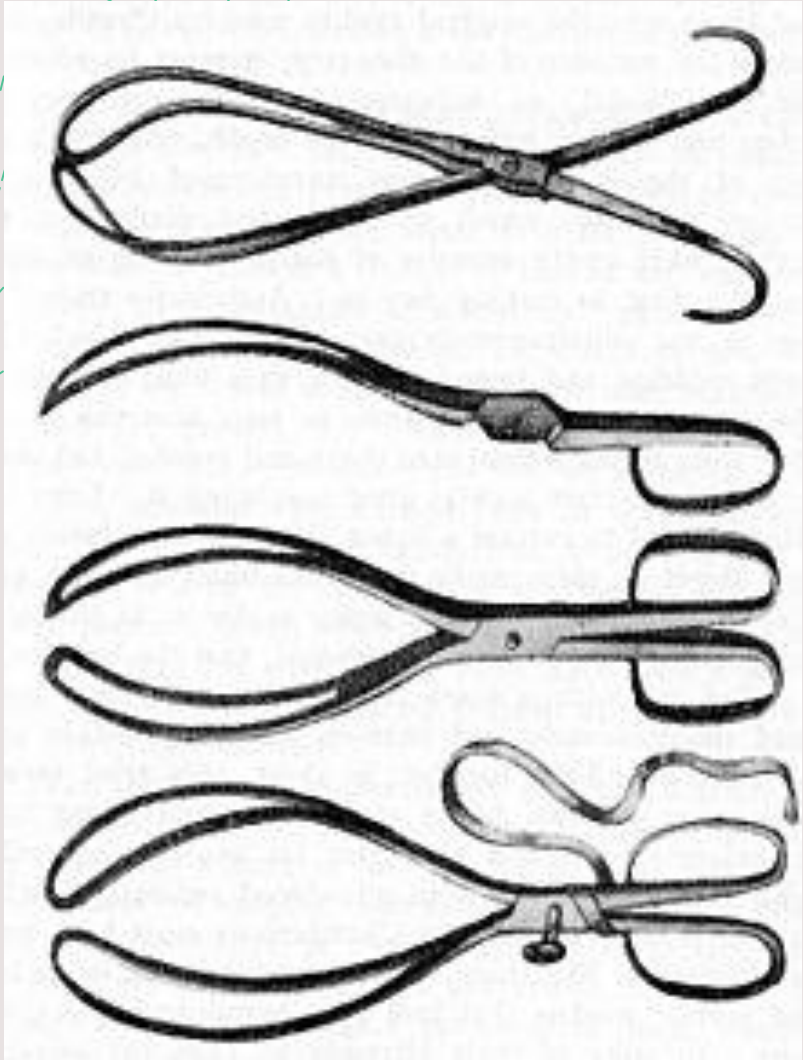
Presented by Alaya Dauphiney

Gynecology

(noun)

+ the “branch of **medicine** that deals with the diseases and routine physical care of the **reproductive system** of women.”





15th-16th centuries:

- **Midwives** handled births. Obstetricians only stepped in when the mother's life was in danger.

17th century:

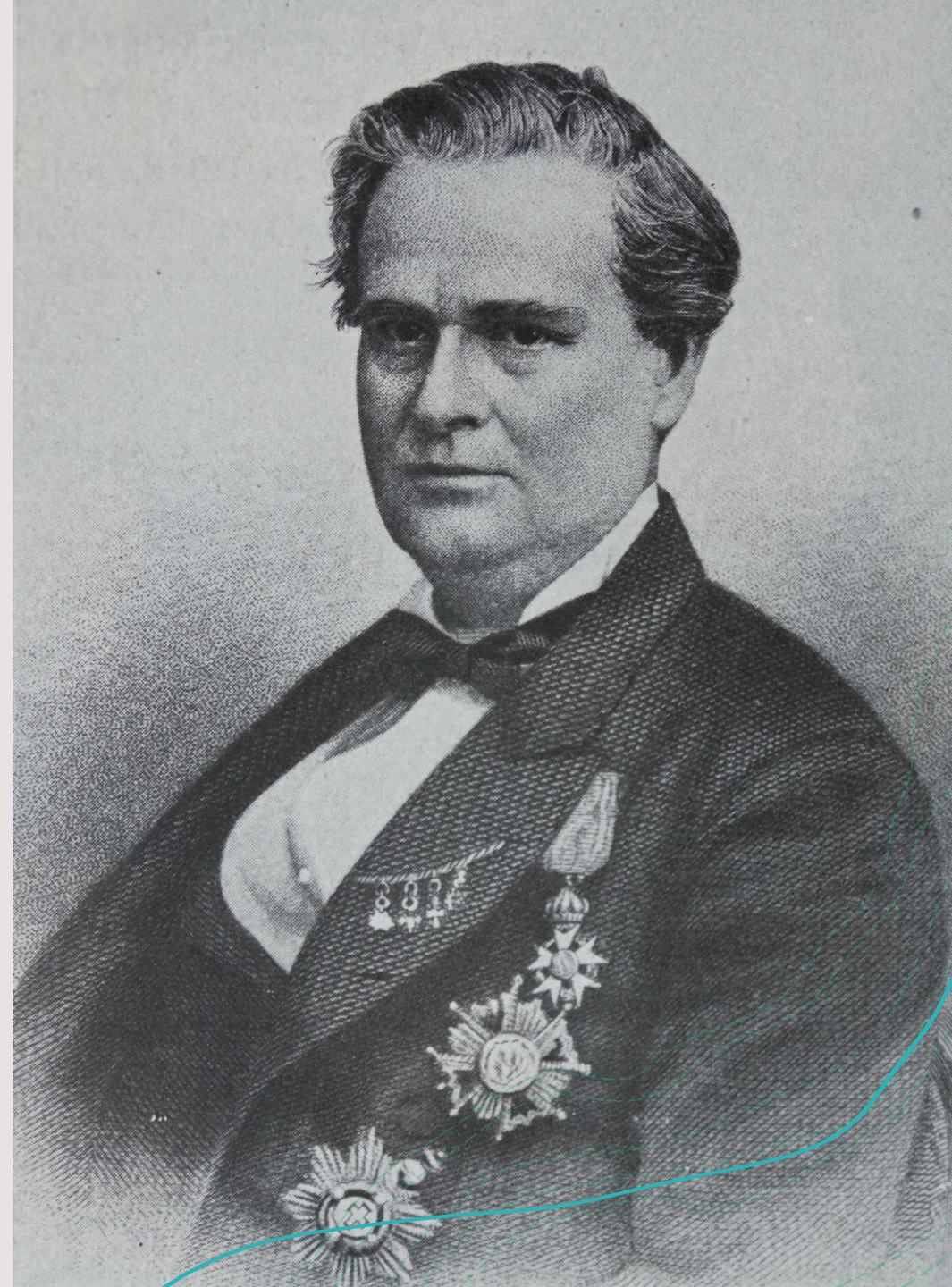
- Introduction of **man-midwives** in France
- Instrumental delivery (improvements of **medical forceps** used in obstructed birth)

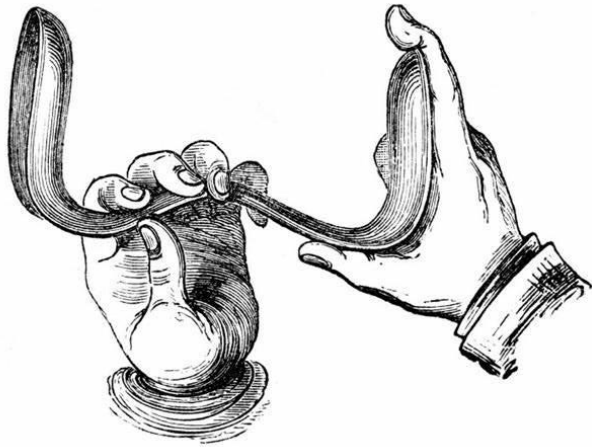
18th century:

- Man-midwives become more popular in Britain.

James Marion Sims (1813-1883)

- + American physician specializing in surgery
- + Graduated from the University of South Carolina and Thomas Jefferson University
- + Opened a practice in Montgomery, Alabama and eventually developed surgical treatment for **vesicovaginal fistula**





Sims's model of a vaginal speculum.



Types of speculums.



Illustration of Dr. J. Marion Sims with Anarcha by Robert Thom.

VBAC Calculator

(Vaginal Birth After Cesarean)

- ❖ A calculator based on **risk factors** that may affect a woman's ability to give **vaginal birth after a previous c-section**
- ❖ Older versions include risk factors by race
- ❖ Race officially removed from the VBAC calculator in 2021

VAGINAL BIRTH AFTER CESAREAN	
Height & weight optional; enter them to automatically calculate BMI	
Maternal age	30 ▼ years
Height (range 54-80 in.)	<input type="text"/> in
Weight (range 80-310 lb.)	<input type="text"/> lb
Body mass index (BMI, range 15-75)	40 ▼ kg/m ²
African-American?	no ▼
Hispanic?	no ▼
Any previous vaginal delivery?	no ▼
Any vaginal delivery since last cesarean?	no ▼
Indication for prior cesarean of arrest of dilation or descent?	no ▼
Estimated gestational age at delivery	40 ▼ weeks
Hypertensive disease of pregnancy	no ▼
Effacement	25 ▼ %
Dilation	1 ▼ cm
Station (0:Floating/Ballotable, 1:-5, 2:-4, 3:-3, 4:-2, 5:-1, 6:0, 7:+1, 8:+2, 9:+3)	3 ▼
Labor induction	yes ▼
<input type="button" value="Calculate"/>	

VAGINAL BIRTH AFTER CESAREAN

Early Pregnancy | Delivery Admission

Maternal age (range 15-50 years):

Height Unit:
 inches
 centimeters

Height (range 119-191 cm):

Weight Unit:
 pounds
 kilograms

Pre-pregnancy weight (range 34-206 kg):

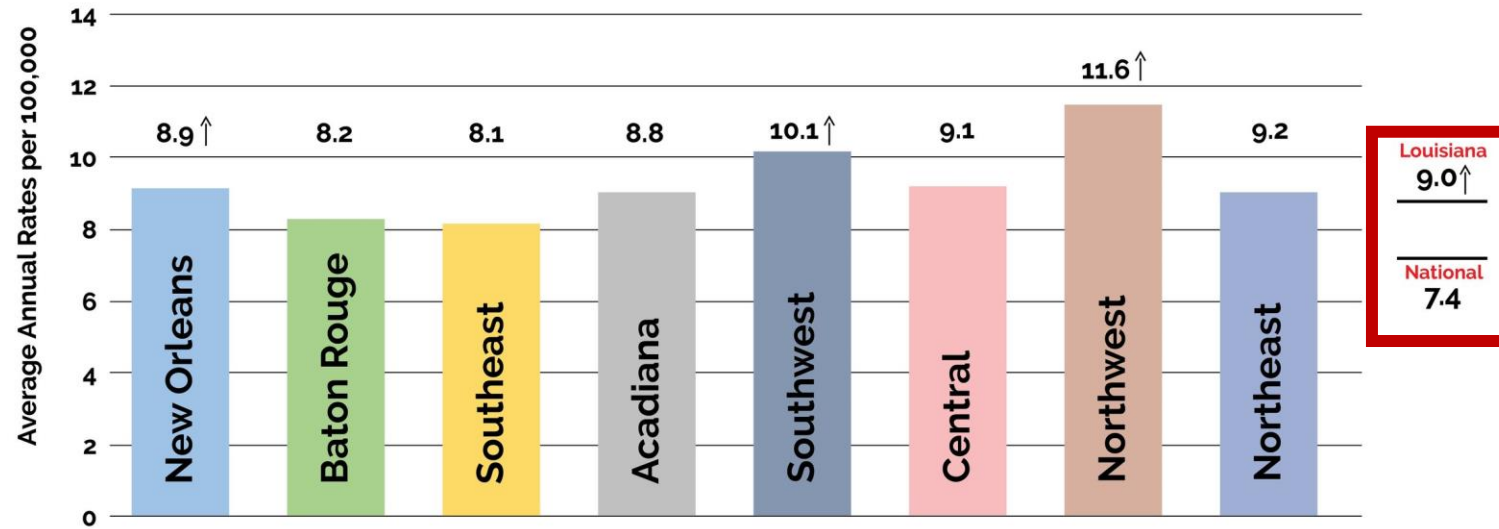
Body mass index: kg/m²

Obstetric History:
Previous VBAC ▼

Arrest disorder indication for prior cesarean?
No ▼

Treated chronic hypertension?
No ▼

Cervical Cancer Incidence by Region, 2011 - 2015



↑ Louisiana rate differs significantly from U.S. (SEER) rate ($p < 0.05$).
 Invasive cases only. All rates are age-adjusted to the U.S. 2000 standard population.

Cervical Cancer Incidence Rates in Louisiana 2017-2021	Black Non-Hispanic Females (all ages)	White Non-Hispanic Females (all ages)
Age Adjusted Incidence Rate cases per 100,000	10.9	8.2
Average Annual Count	84	119
Recent 5-Year Trend in Incidence Rates	-1.6	-0.1

References

- Buck, S. (2012). Forceps: a brief history – Hektoen International. *Hektoen International – an Online Medical Humanities Journal*. <https://hekint.org/2017/01/27/forceps-a-brief-history/>
- Cleveland Clinic. (2022). Speculum: design, purpose, types, exams, and what to expect. *Cleveland Clinic*. <https://my.clevelandclinic.org/health/drugs/24238-speculum>
- Holland, B. (2018). The “father of modern gynecology” performed shocking experiments on slaves. *History.com*. <https://www.history.com/news/the-father-of-modern-gynecology-performed-shocking-experiments-on-slaves>
- Kamel, J. (2020). New study reveals surprising truths about the VBAC calculator. *VBAC Facts*. <https://vbacfacts.com/2020/02/24/new-research-vbac-calculators/>
- Louisiana Cancer Prevention & Control Programs. (2022). Cervical cancer & HPV | Louisiana cancer prevention and control programs. *Louisiana Cancer Prevention and Control Programs*. <https://louisianacancer.org/cancers/cervical-cancer//>
- Merriam-Webster. (n.d.). *Merriam-Webster.com dictionary*. Retrieved November 25, 2024, from <https://www.merriam-webster.com/dictionary/gynecology>
- National Institutes of Health. (2017). State cancer profiles > quick profiles, *Cancer.gov*. <https://statecancerprofiles.cancer.gov/quick-profiles/index.php?statename=louisiana>
- Thom, R. (1950). *Dr. J. Marion Sims with Anarcha*. [Painting].