

State of the University

August 21, 2024





**SERVICE. VISION.
LEADERSHIP. LOUISIANA.**



GROWTH, SUCCESS & SERVICE



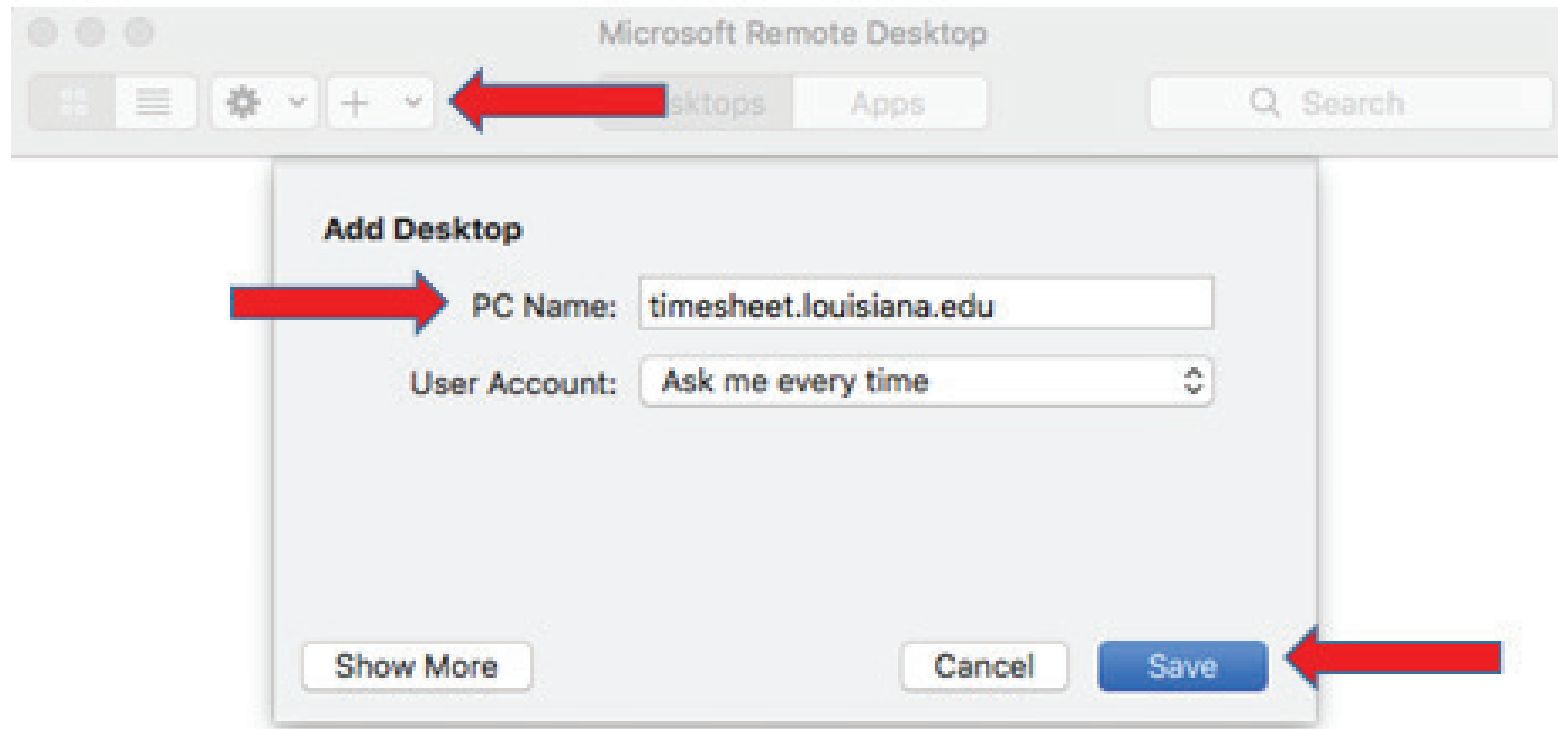
GROWTH, SUCCESS & SERVICE



- INVESTING FOREX TRADING DIFFICULTIES
- ADVANCEMENT IN AI (ARTIFICIAL INTELLIGENCE)
- BING AI RESEARCH
- EFFECT ON PRO INVESTORS' PROFIT FROM PAID INVESTING COURSES
- FURTHER RESEARCH NEEDED TO ASSESS HOW WELL THIS IDEA CAN WORK

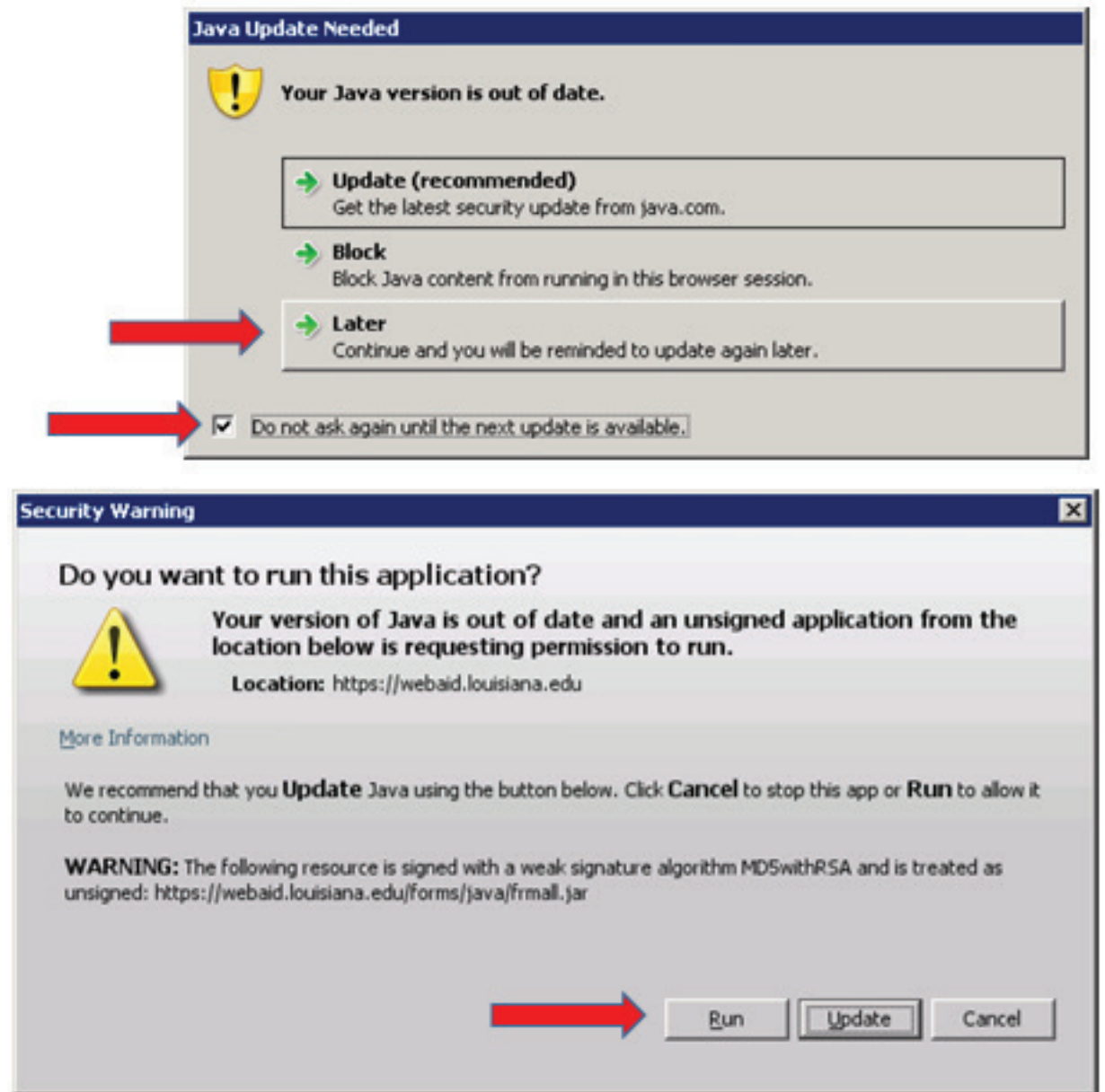
GROWTH, SUCCESS & SERVICE





Add your first desktop connection to get started.

Add desktop







 **MENTAL HEALTH WEEK.**

NOVEMBER 6-11, 2023



Enjoy ice cream, yoga, football, and more, while exploring mental wellness.

You are not alone.



Student Mental Health & Wellness

Students receive

FREE IMMEDIATE ACCESS TO TELETHERAPY

Choose a therapist based on your preferences
gender, language, ethnicity, focus area

at a time that fits your schedule
day, night, weekend availability by video, phone, chat or message

Private. Secure. Confidential.

Experiencing a mental health crisis? Help is available 24/7/365

833.646.1526

If you are experiencing a medical emergency call 911.



Scan the QR code to get started
using your school email



In Memoriam

LT. BILLY R. ABRAMS
UL Lafayette Police Department

BASIL BENNETT BROWN
Senior, Computer Science
Ray P. Authement College of Sciences

DR. GERALD CARLSON
Dean Emeritus
College of Education & Human Development

ROBERT LEE CARMOUCHE
Director of Special Services
University College

DR. CHIU YEUNG CHAN
Professor Emeritus of Mathematics
Ray P. Authement College of Sciences

AMANDA OLIVIER CLARK
Doctoral Student, Educational Leadership
Graduate School

DR. RICHARD CUSIMANO
Former Dean & Professor Emeritus of History
College of Liberal Arts

MICHAEL ARTHUR GELLER
Freshman, Kinesiology
College of Education & Human Development

DR. ERIC GREEN
Instructor of Psychology
College of Liberal Arts

DANIELLE JENENE KEYS
Doctoral Student, Educational Leadership
Graduate School

NATHAN LEE
Doctoral Student, English
Graduate School

TERESA MARIA MONAHAN
Sophomore, Marketing
B.I. Moody III College of Business Administration

DR. THOMAS SCHOONOVER
Professor Emeritus of History
College of Liberal Arts

DR. WILLIAM SIMON
Professor Emeritus of Mechanical Engineering
College of Engineering

DR. JOHN R. TANNER
Professor of Marketing
B.I. Moody III College of Business Administration

DR. N. RAO THAMMAVARAM
Professor Emeritus
Center for Advanced Computer Studies





3,055 *Degrees* 2023-24

2,239 BACHELOR'S DEGREES 719 MASTER'S DEGREES 81 DOCTORAL DEGREES





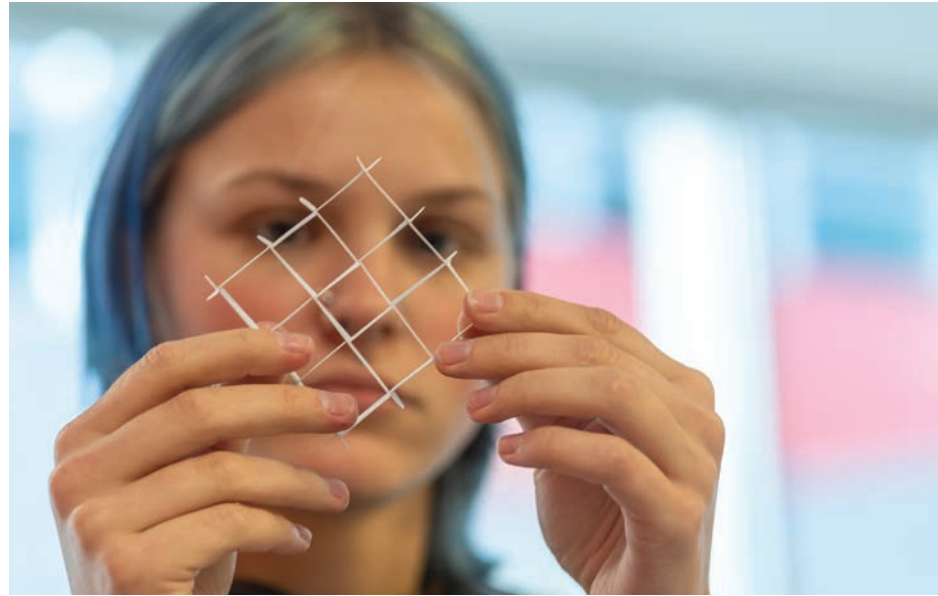


UNIVERSITY of
LOUISIANA
L A F A Y E T T E

Alumni Association











FACILITY IMPROVEMENTS



O.K. ALLEN HALL



AGNES EDWARDS HALL

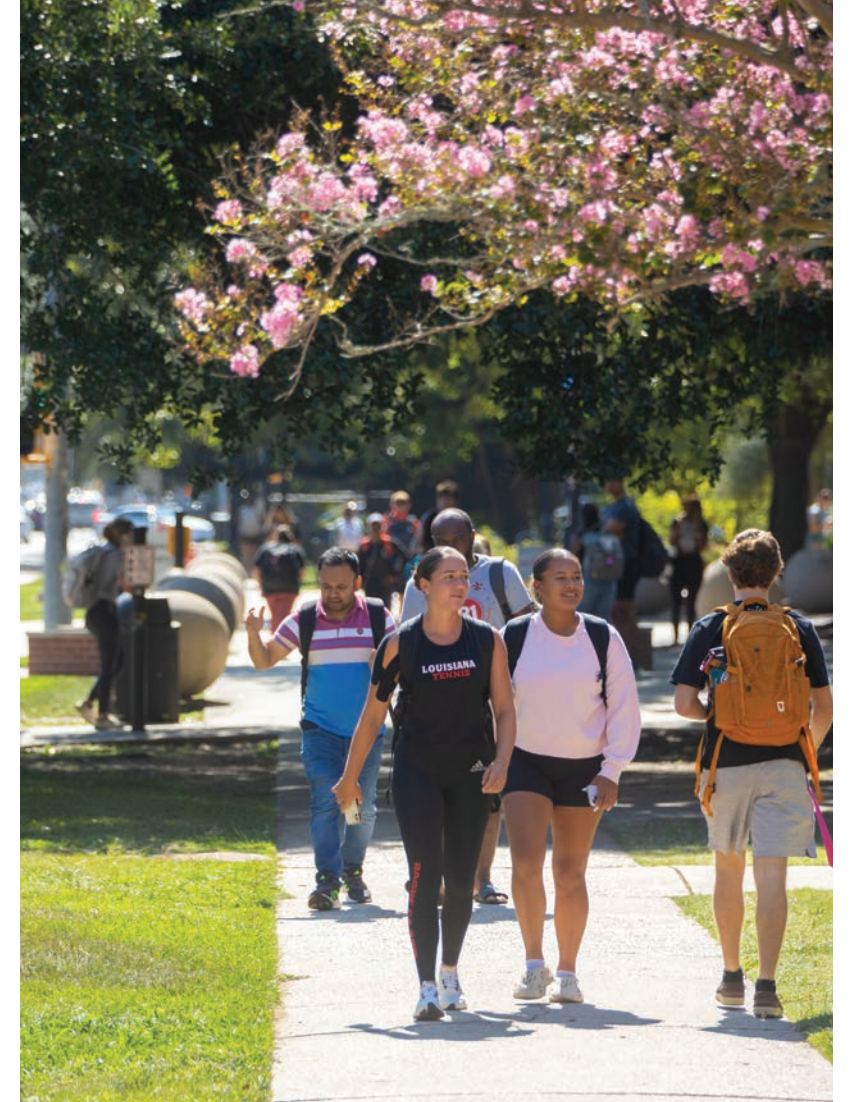


BROOK STREET ANNEX



ROTC BUILDING

FACILITY IMPROVEMENTS





FACILITIES PROJECTS



FOSTER HALL



DECLOUET HALL



FACILITIES PROJECTS

\$601 *million*

IN DESIGN OR UNDER CONSTRUCTION



FACILITIES PROJECTS

\$535 *million*

REQUESTED IN CAPITAL OUTLAY



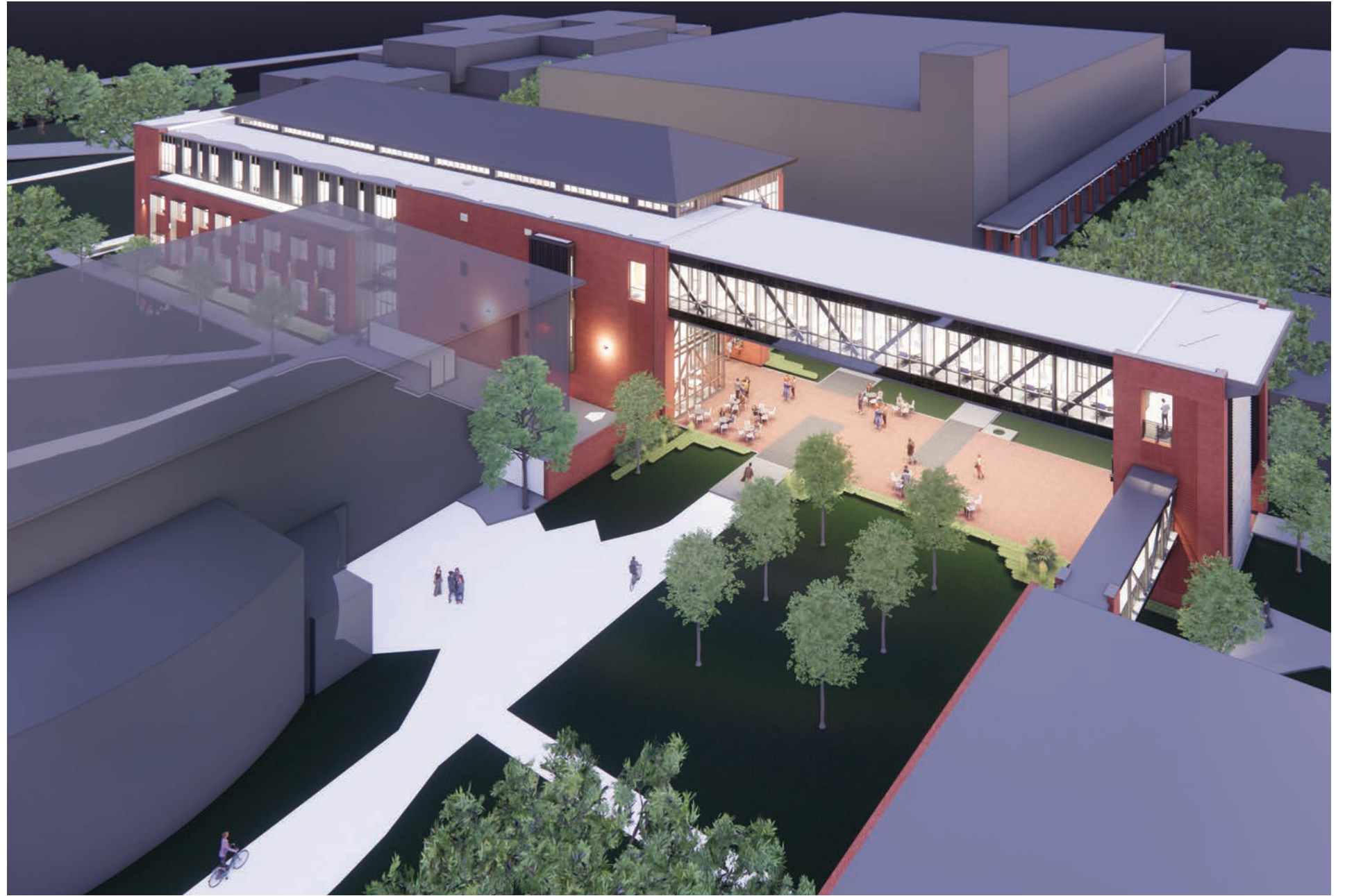
FACILITIES PROJECTS

\$1.1 *billion*

**IN DESIGN, UNDER CONSTRUCTION
OR BEING REQUESTED**









FACILITIES PROJECTS

SCIENCES BUILDING AND STEM QUAD





FACILITIES PROJECTS



BILLEAUD HALL



MONTGOMERY HALL



FACILITIES PROJECTS

LAB SCHOOL







FACILITIES PROJECTS



NEW IBERIA RESEARCH CENTER (NIRC)



FACILITIES PROJECTS



NIRC BIOSAFETY LEVEL 3 BUILDING



FACILITIES PROJECTS

**BIOINNOVATION
ACCELERATOR**



FIRST SOLAR



IMAGES COURTESY OF AERO IMAGING LLC





UL LAFAYETTE RESEARCH AND DEVELOPMENT EXPENDITURES AND NATIONAL RANKINGS

NATIONAL SCIENCE FOUNDATION

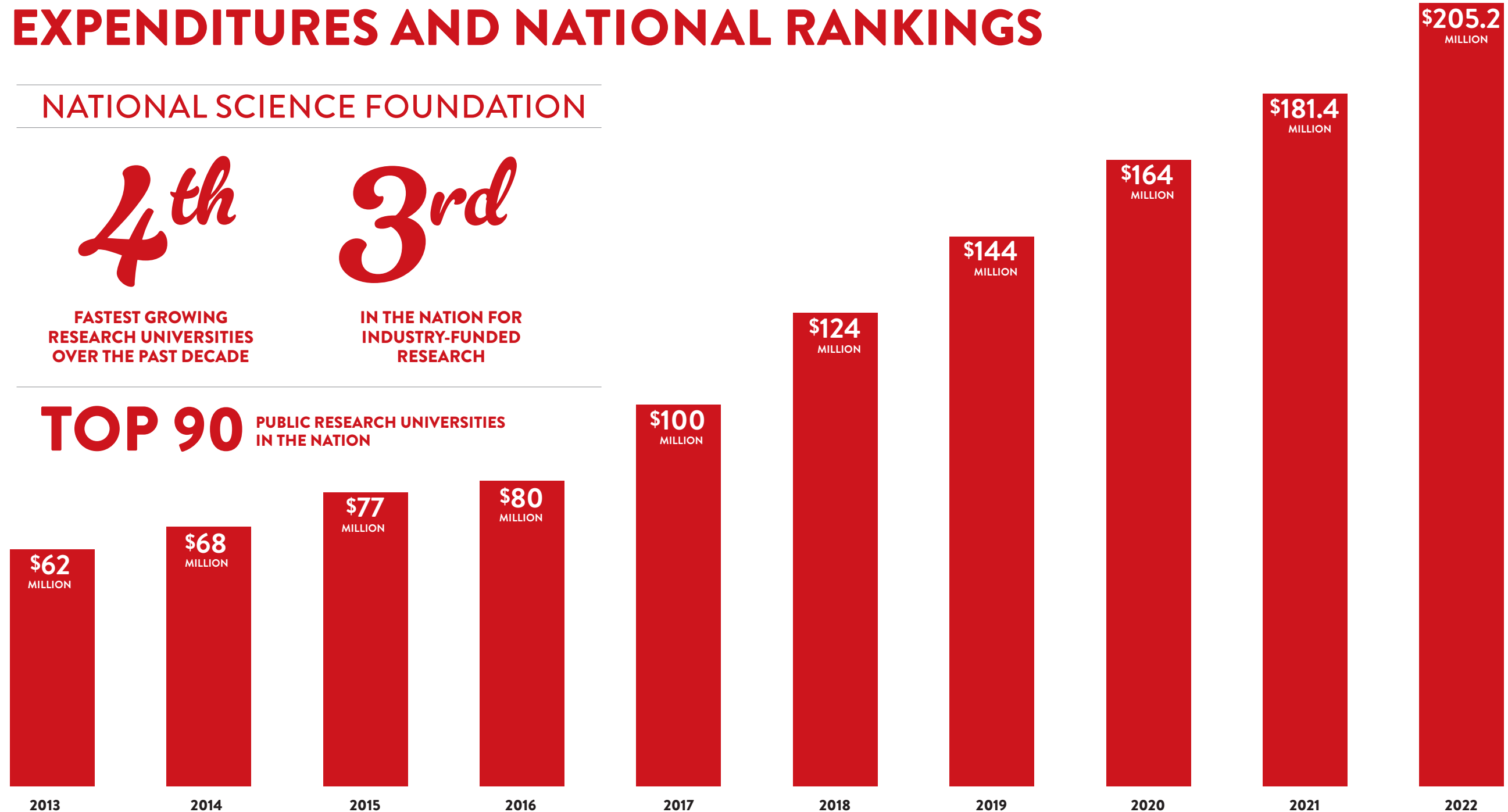
4th

FASTEST GROWING
RESEARCH UNIVERSITIES
OVER THE PAST DECADE

3rd

IN THE NATION FOR
INDUSTRY-FUNDED
RESEARCH

TOP 90 PUBLIC RESEARCH UNIVERSITIES IN THE NATION



UL LAFAYETTE RESEARCH AND DEVELOPMENT EXPENDITURES AND NATIONAL RANKINGS

NATIONAL SCIENCE FOUNDATION

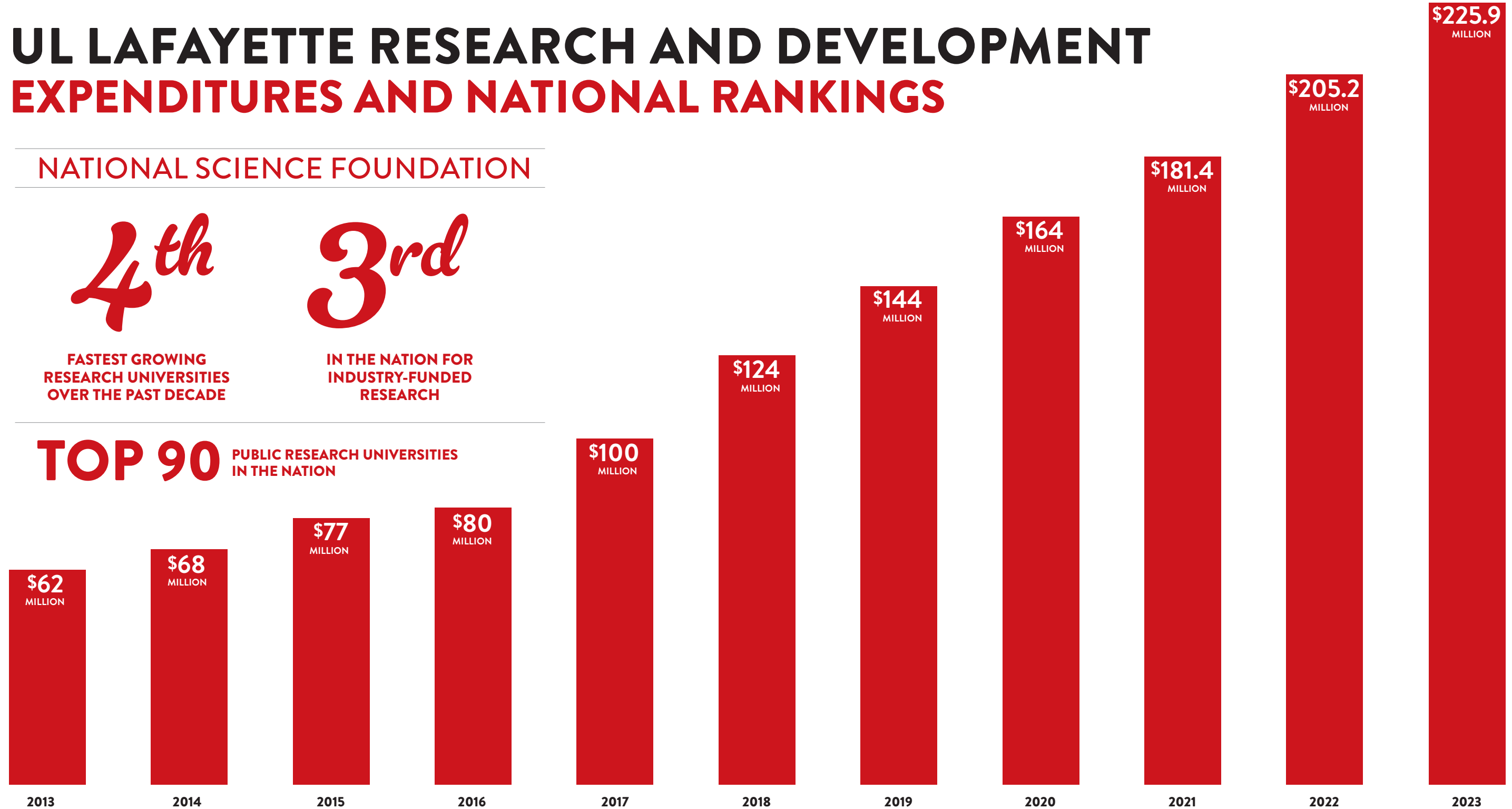
4th

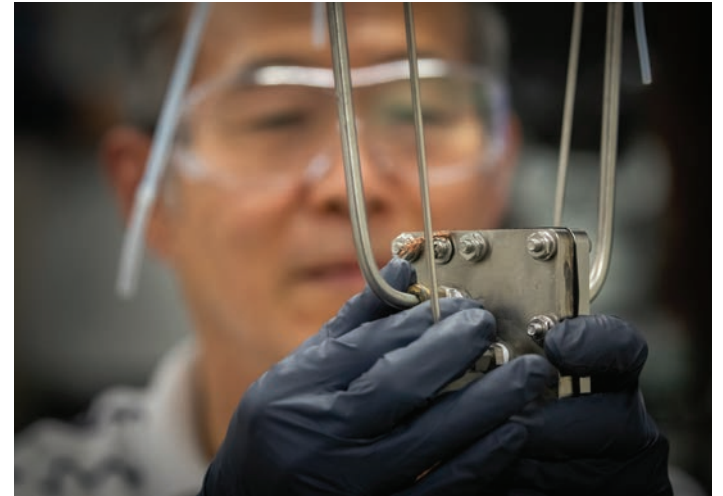
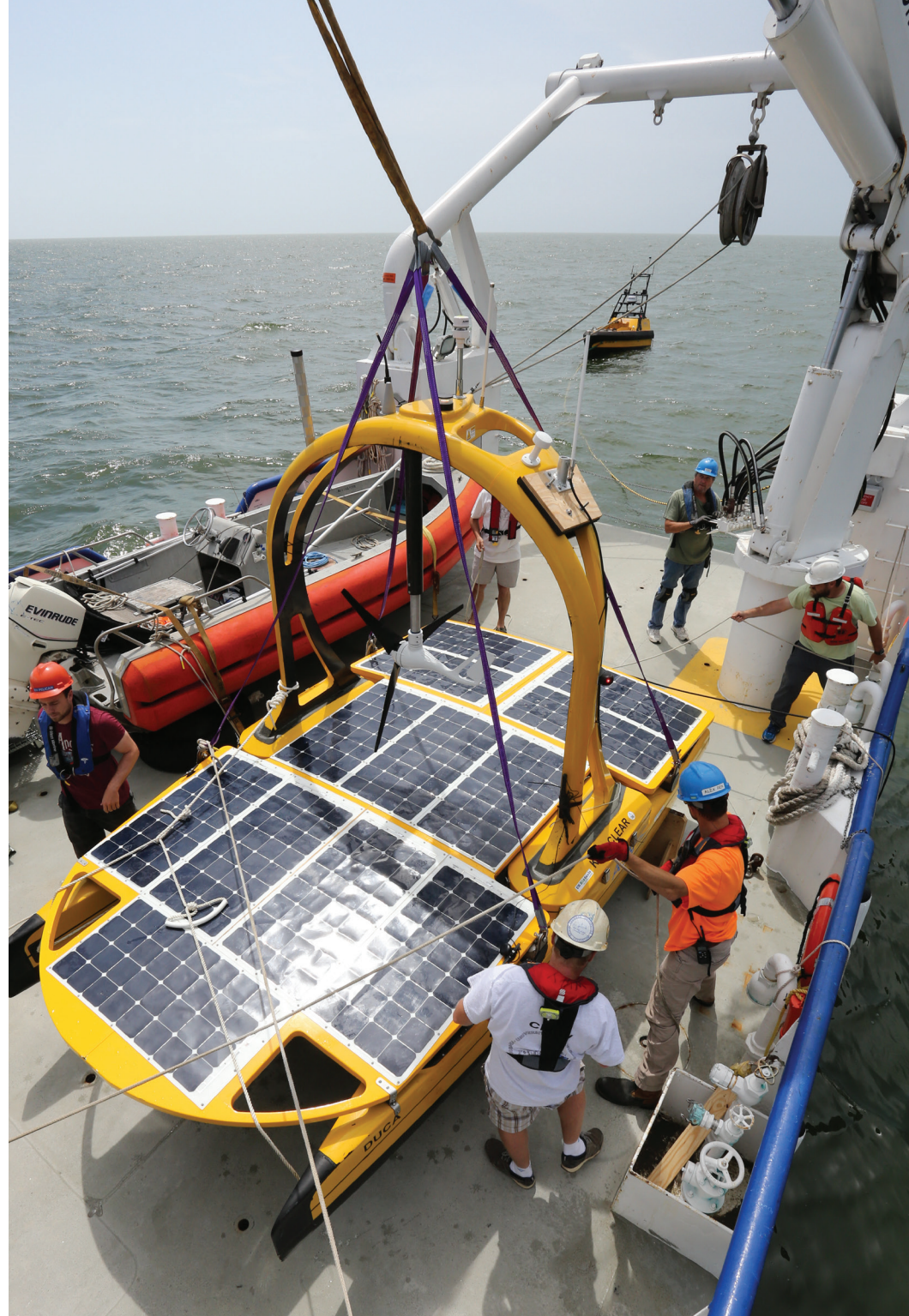
FASTEST GROWING
RESEARCH UNIVERSITIES
OVER THE PAST DECADE

3rd

IN THE NATION FOR
INDUSTRY-FUNDED
RESEARCH

TOP 90 PUBLIC RESEARCH UNIVERSITIES IN THE NATION





UL LAFAYETTE RESEARCH AND DEVELOPMENT EXPENDITURES AND NATIONAL RANKINGS

NATIONAL SCIENCE FOUNDATION

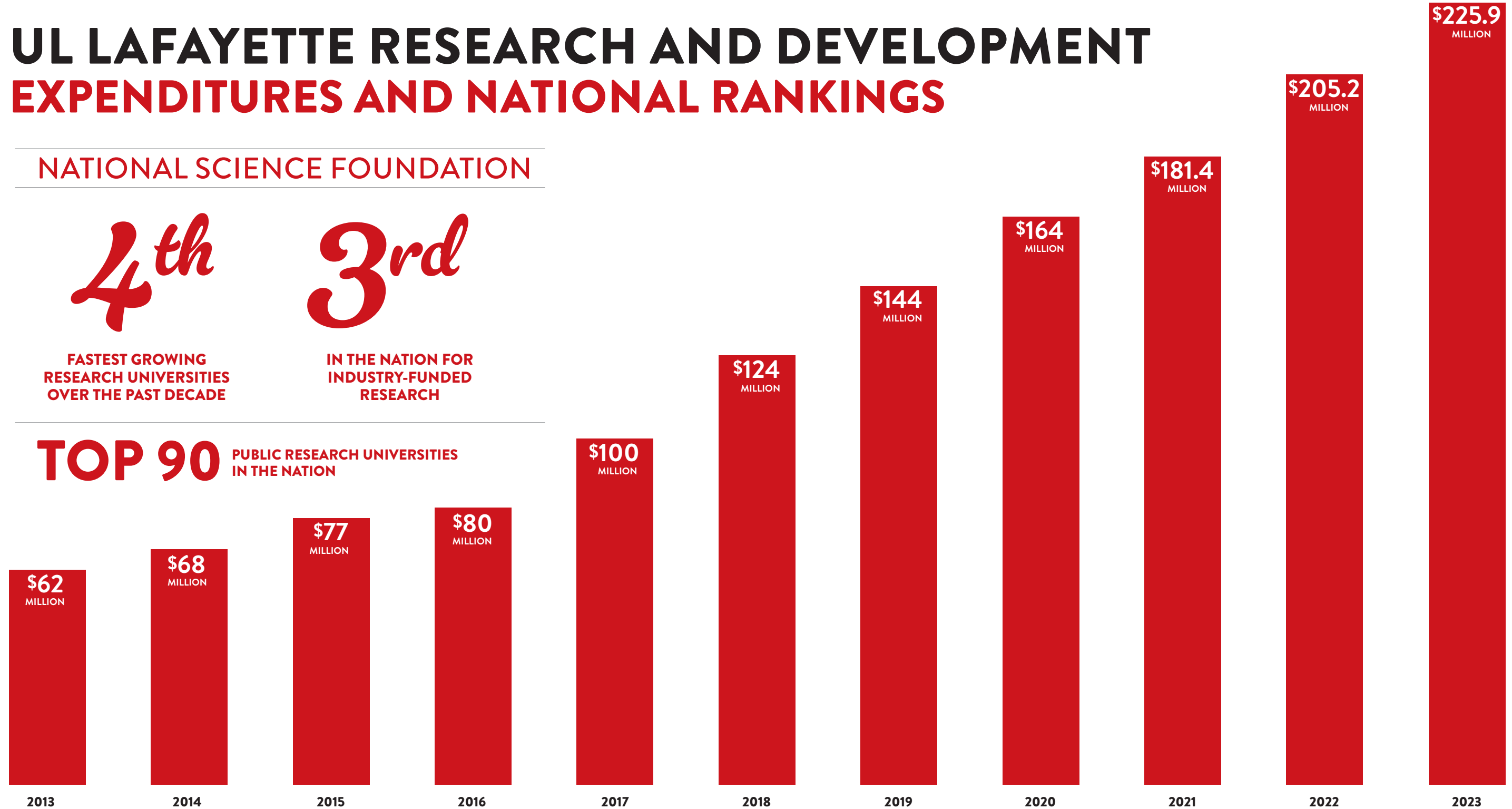
4th

FASTEST GROWING RESEARCH UNIVERSITIES OVER THE PAST DECADE

3rd

IN THE NATION FOR INDUSTRY-FUNDED RESEARCH

TOP 90 PUBLIC RESEARCH UNIVERSITIES IN THE NATION



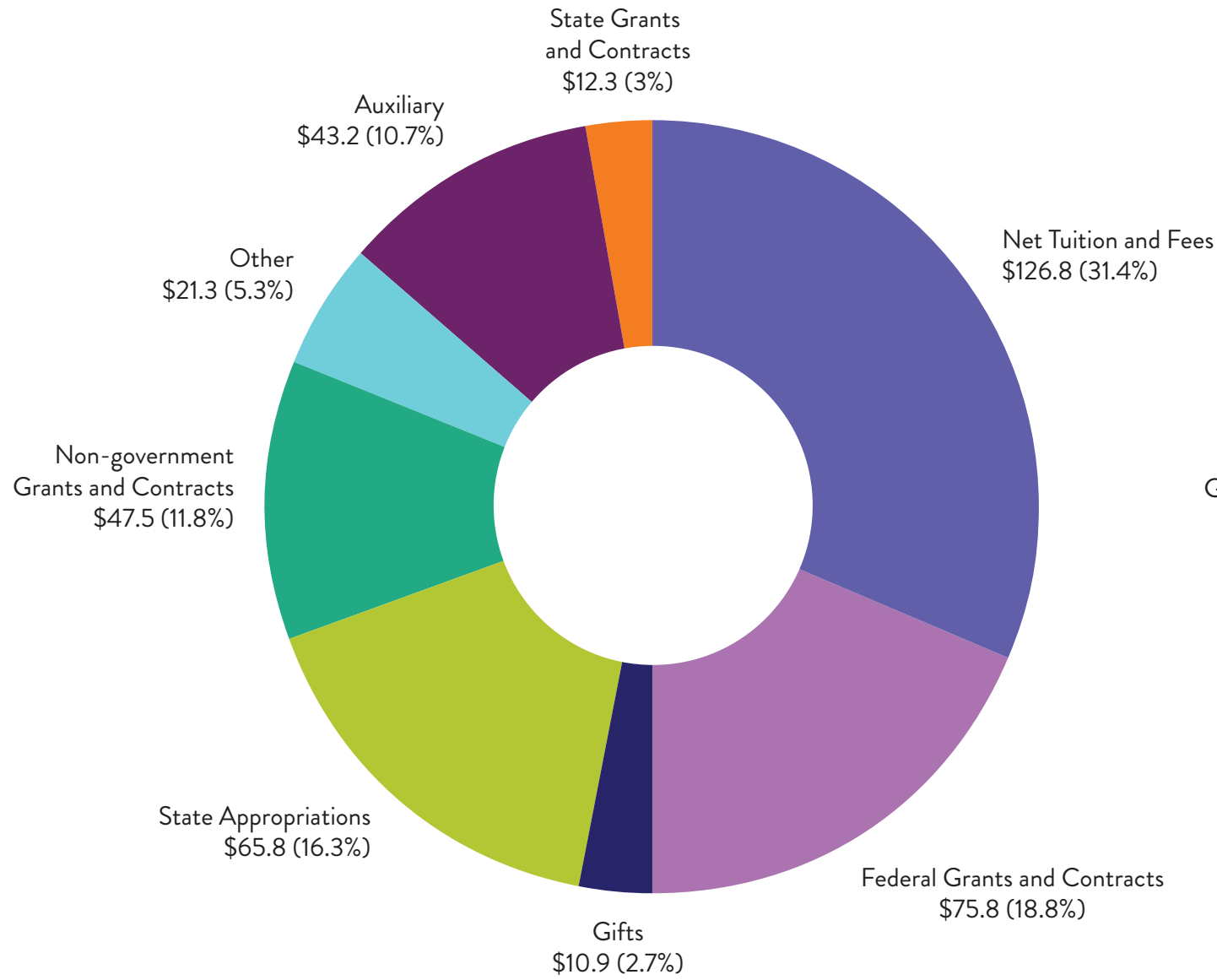






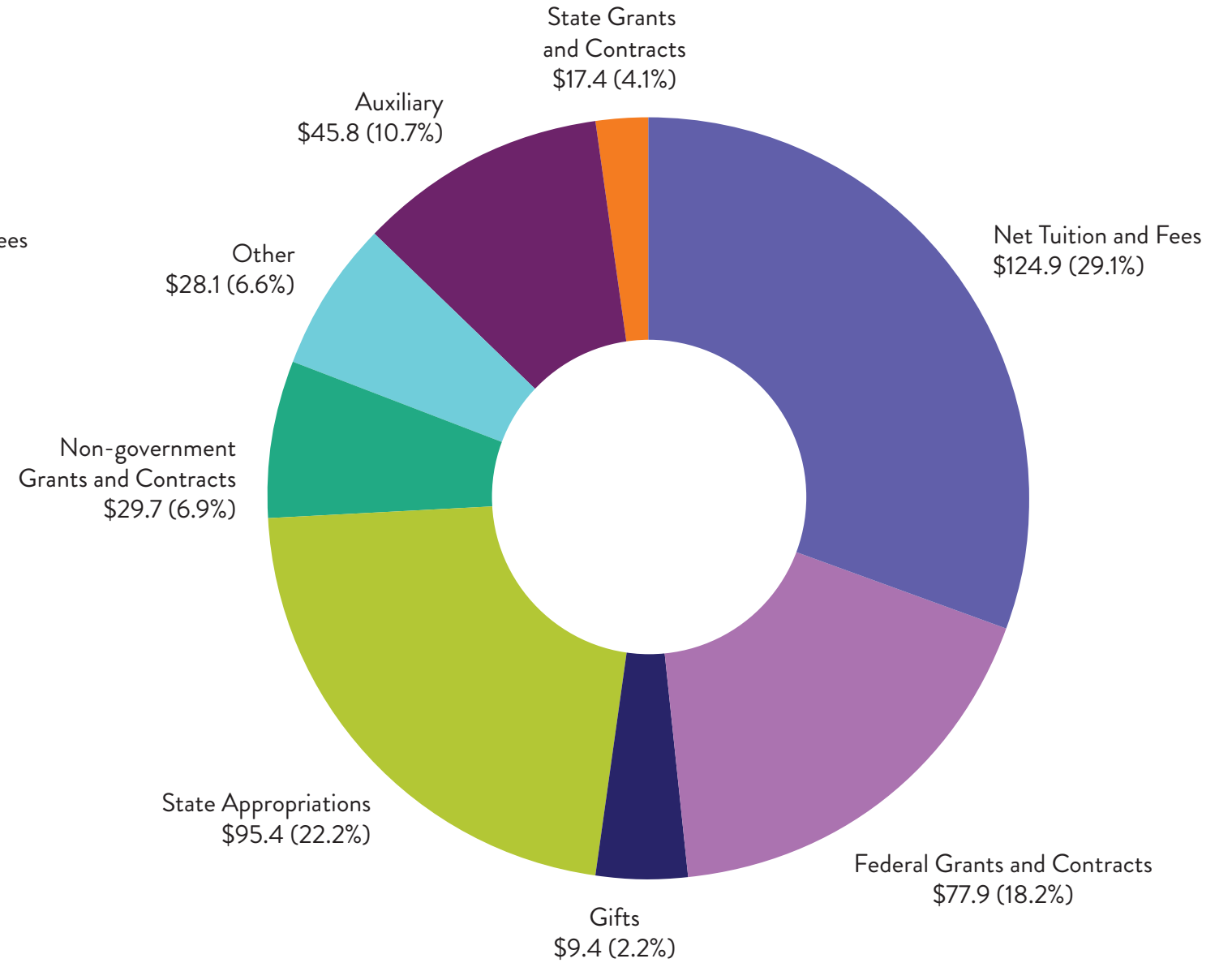


OVERALL REVENUES



FY23

TOTAL REVENUE \$403.6 MILLION



FY24

TOTAL REVENUE \$428.9 MILLION



Together,
**WE SHAPE
THE FUTURE.**

THE CAMPAIGN FOR THE UNIVERSITY OF LOUISIANA AT LAFAYETTE



Together, WE SHAPE THE FUTURE.

THE CAMPAIGN FOR THE UNIVERSITY OF LOUISIANA AT LAFAYETTE

CAMPAIGN TOTAL TO DATE

\$450 MILLION



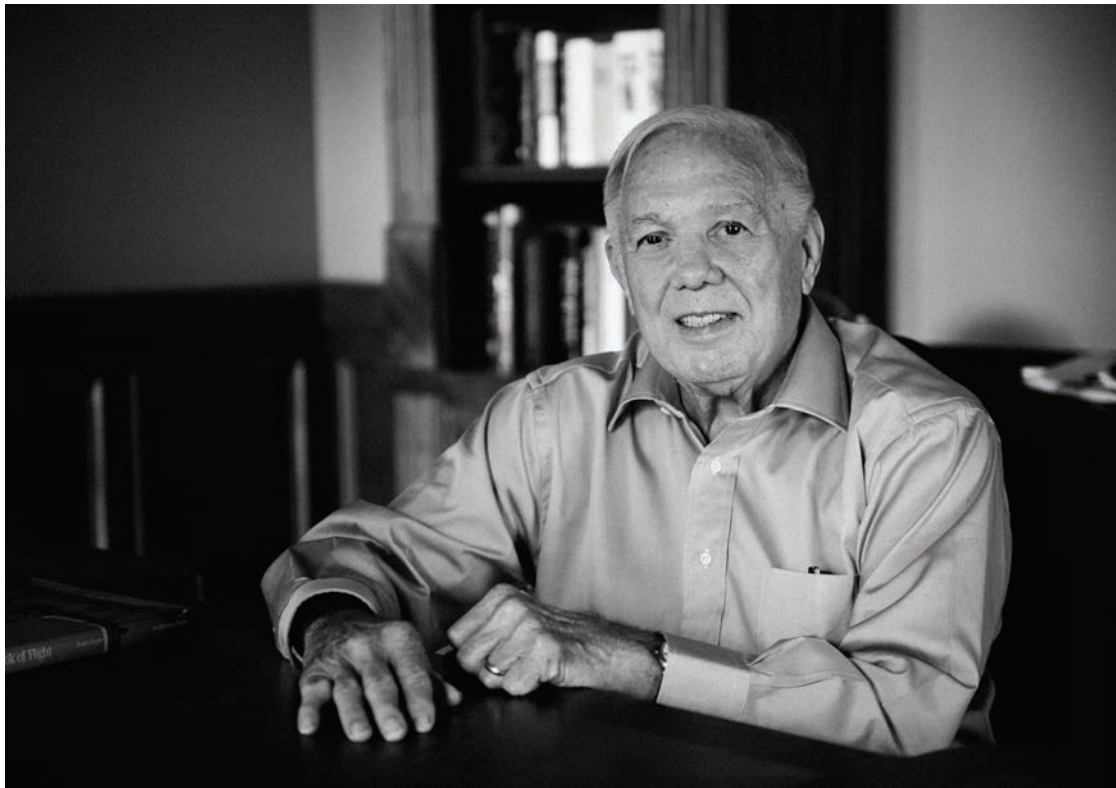
Together, WE SHAPE THE FUTURE.

THE CAMPAIGN FOR THE UNIVERSITY OF LOUISIANA AT LAFAYETTE

29,000 DONORS

600 FACULTY & STAFF



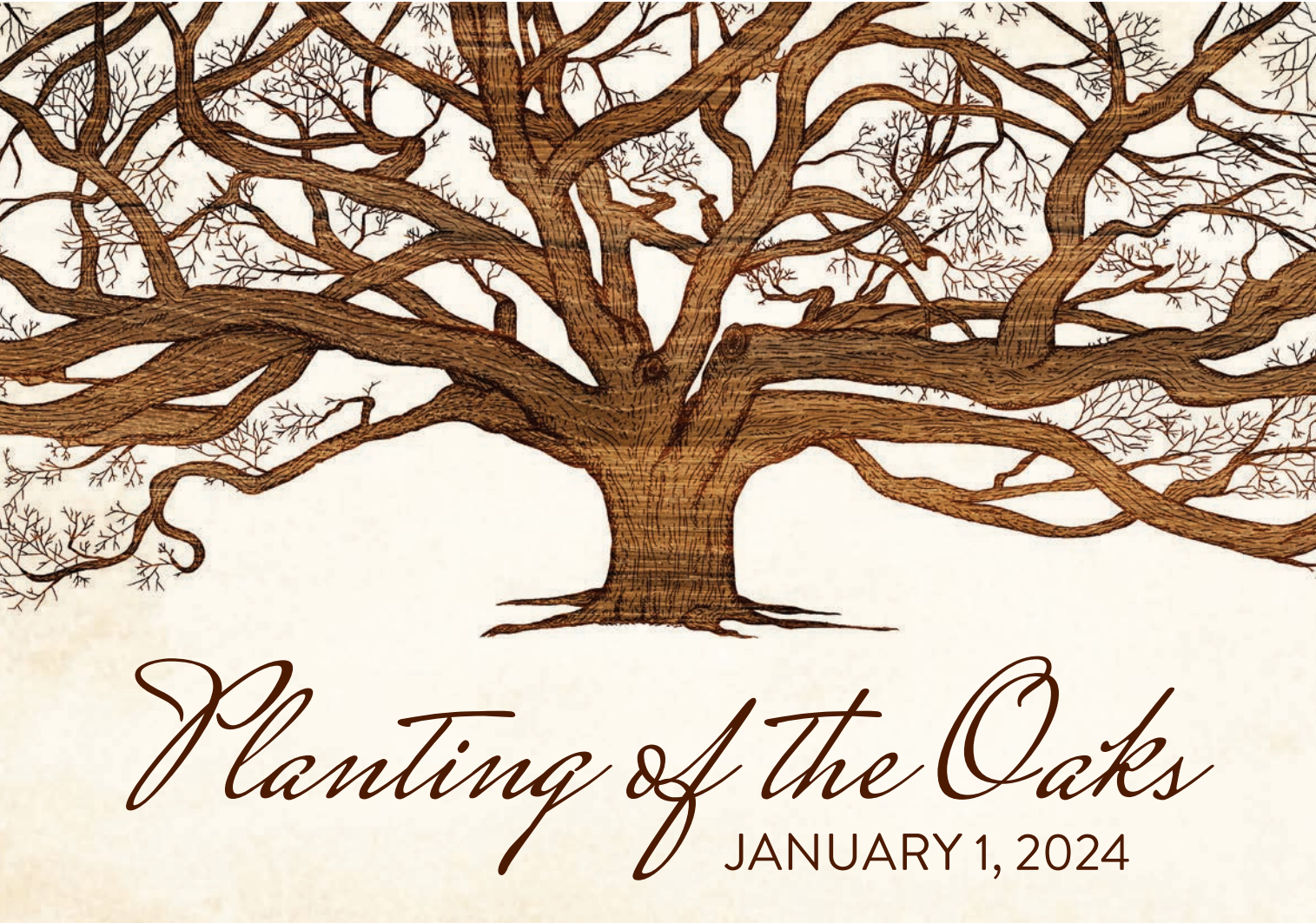


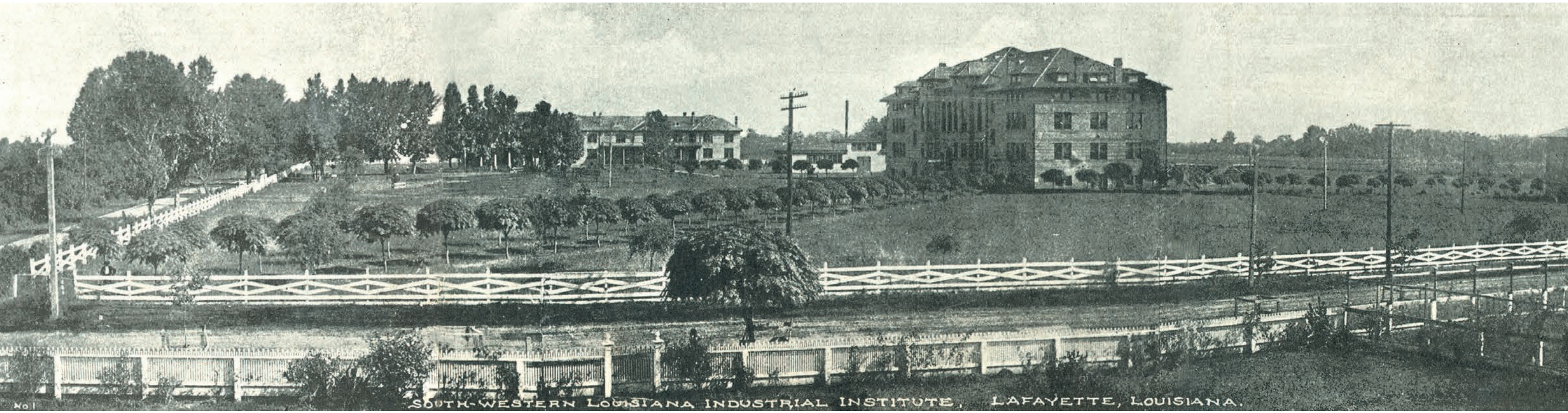


















SUBMIT QUESTIONS VIA ULINK

FIND MORE FROM TODAY'S PRESENTATION AT
LOUISIANA.EDU/STATEOFTHEUNIVERSITY

